

BRANNER SURVEYING  
12500 N. PEACH RIDGE ROAD  
ATHENS, OHIO 614-592-5778

DESCRIPTION OF A 5.001 ACRE TRACT

Situated in Section 7, T.11, R.15, Waterloo Township, Athens County, Ohio and being more particularly described as follows:

Beginning at an iron pin set at the South-east corner of the North-west Quarter of Section 7;

thence North 89 degrees 08 minutes 31 seconds West, a distance of 397.00 feet to an iron pin set;

thence North 0 degrees 51 minutes 21 seconds East, a distance of 574.31 feet to a point in County Road 81, passing an iron pin set at 544.31 feet;

thence, along said road, South 81 degrees 13 minutes 28 seconds East, a distance of 302.46 feet;

thence North 87 degrees 15 minutes 57 seconds East, a distance of 97.62 feet;

thence, leaving said road, South 0 degrees 51 minutes 21 seconds West, a distance of 538.77 feet (passing an iron pin set at 19.86 feet) to the POINT OF BEGINNING; said described tract containing 5.005 acres.

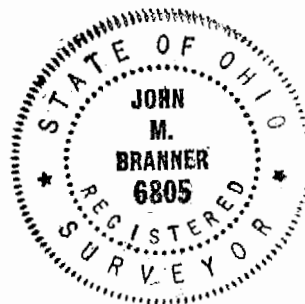
Subject to all easements and rights of way of record.

All iron pins set are 5\8" by 30 inch long rebar.

The above description is based on a field survey completed January 1998 by John M. Branner P.S. 6805.

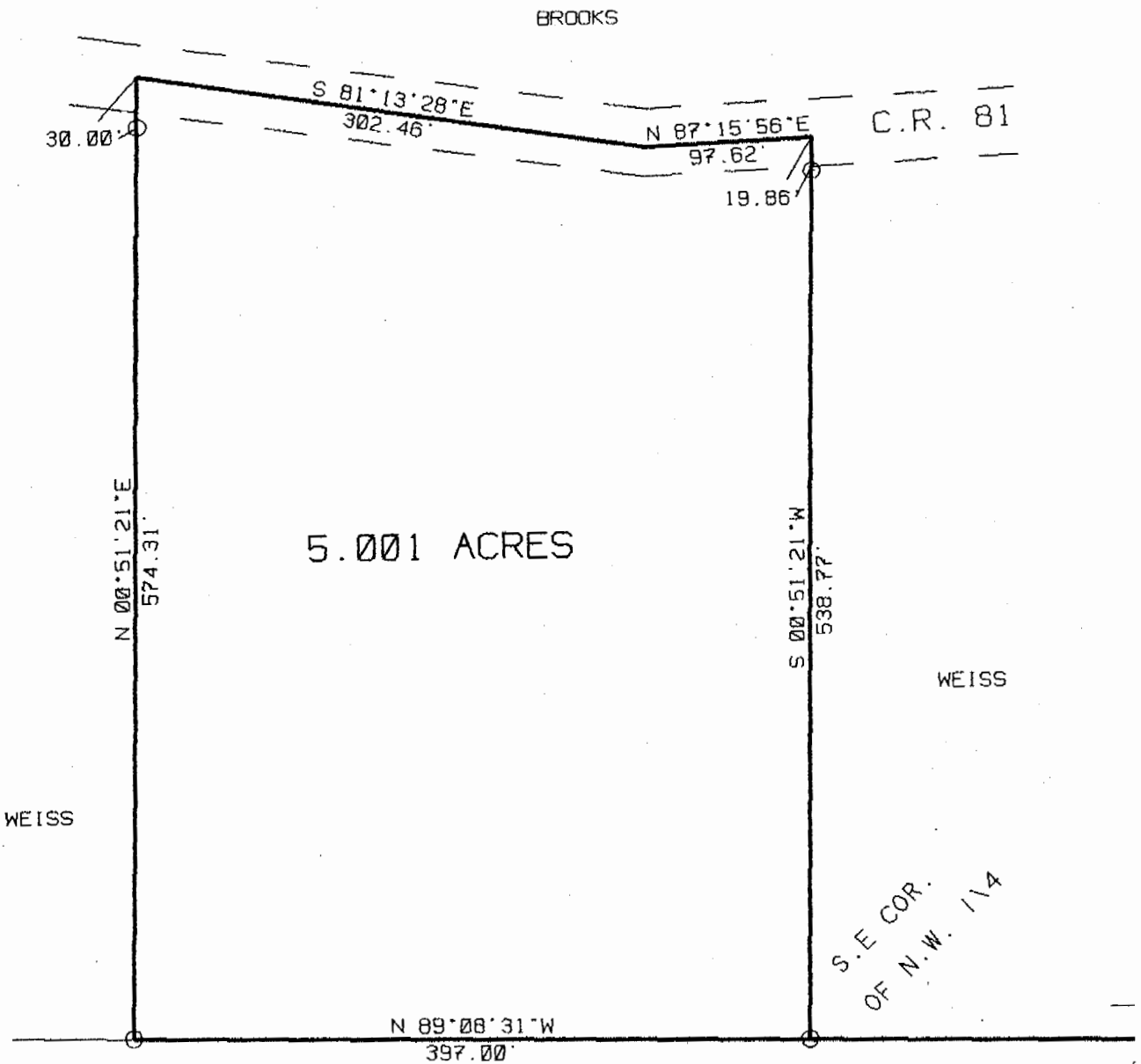
*John M. Branner*

Description checked for  
Mathematical Accuracy  
ATHENS COUNTY  
ENGINEER'S OFFICE  
BY: S. Blause  
DATE: 1-12-98



85

WAT#7



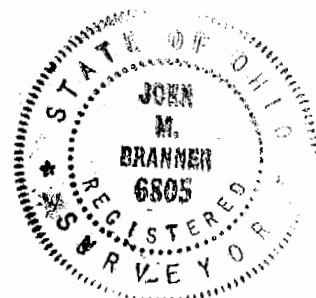
SURVEY OF A 5.001 ACRE TRACT  
 IN SECTION 7, T.11, R.15  
 WATERLOO TOWNSHIP  
 ATHENS COUNTY, OHIO

Description checked for  
 Mathematical Accuracy  
 ATHENS COUNTY  
 ENGINEER'S OFFICE  
 BY: *S. Blawie*  
 DATE: 1-12-98

SURVEYED JAN. 1998

*John M. Branner*  
 JOHN M. BRANNER P.S. 6805  
 12500 N. PEACH RIDGE ROAD  
 ATHENS, OHIO 592-5778

SCALE 1 INCH - 100 FEET  
 O - IRON PIN SET



86