

BRANNER SURVEYING

MEMBER-PROFESSIONAL LAND SURVEYORS OF OHIO

12500 PEACH RIDGE ROAD
ATHENS, OHIO 45701

JOHN M. BRANNER
Registered Land Surveyor

TELEPHONE
(614) 592-5778

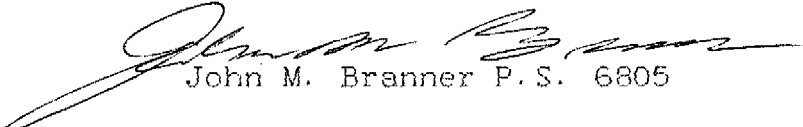
DESCRIPTION OF A 7.46 ACRE TRACT

Situated in Fraction 23, Section 22, T.11, R.15, Waterloo Township, Athens County, Ohio and being more particularly described as follows:

Beginning at a point at the intersection of State Route 356 with State Route 56, said point bearing East 660 feet and North, 450 feet from the South-west corner of Fraction 23

Thence, along State Route 56, North 29 Degrees 08 Minutes 15 Seconds West, 135.80 feet to a point; thence, North 14 Degrees 53 Minutes 54 Seconds East, 78.29 feet to a point; thence, North 18 Degrees 11 Minutes 27 Seconds East, 101.12 feet to a point; thence, North 08 Degrees 13 Minutes 49 Second East, 422.34 feet to a point; thence, North 06 Degrees 44 Minutes 53 Seconds East, 318.36 feet to a point; thence, leaving said road, South 75 Degrees 37 Minutes 25 Seconds East, 310.22 feet to an iron pin set, passing an iron pin set at 43.7 feet; thence, South 06 Degrees 13 Minutes 31 Seconds West, 983.25 feet to a rail road spike set in State Route 56; thence, along said road, South 84 Degrees 33 Minutes 42 Seconds West, 78.00 feet to a point; thence, North 89 Degrees 06 Minutes 17 Seconds West, 107.09 feet to a point; thence, North 68 Degrees 54 Minutes 42 Seconds West, 99.25 to the point of beginning and containing 7.46 acres.

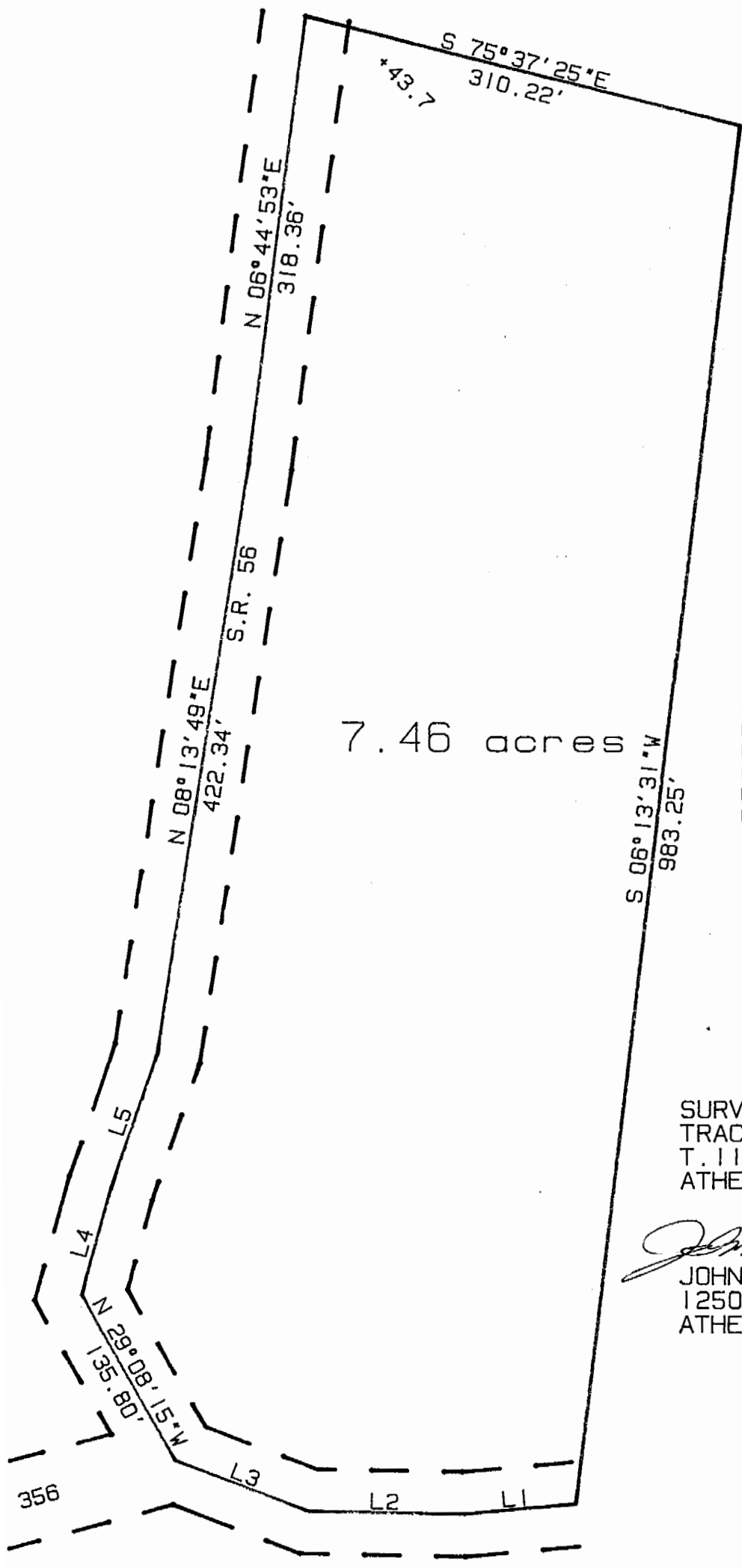
Subject to all easements and rights of way of record.


John M. Branner P. S. 6805

Description checked for
Mathematical Accuracy
ATHENS COUNTY
ENGINEER'S OFFICE

BY: Cheryl Hedges

DATE: 5/7/93



SCALE 1 INCH = 100 FEET
 = IRON PIN SET

LINE	BEARING	DISTANCE
L 1	S 84°33'42"W	78.00'
L 2	N 89°06'17"W	107.09'
L 3	N 68°54'42"W	99.25'
L 4	N 14°53'54"E	78.29'
L 5	N 18°11'27"E	101.12'

SURVEY OF A 7.46 ACRE TRACT IN FR. 23 SEC. 23 T.11. R.15. WATERLOO TWP. ATHENS COUNTY, OHIO SURVEYED MAY 1992

John M. Branner
 JOHN M. BRANNER P.S. 6805
 12500 N. PEACH RIDGE ROAD
 ATHENS .OHIO 592-5778