

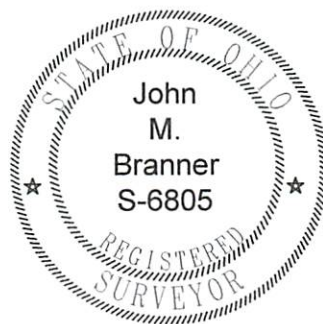
DESCRIPTION OF A 31.61 ACRE TRACT

Situated in Fraction 17 and Fraction 23 of Section 22, T.11, R.15, Waterloo Township, Athens County, Ohio and being more particularly described as follows:

Beginning at an iron pin found that bears South 86 degrees 19 minutes 17 seconds East, 2491.85 feet from the South-west corner of Fraction 23,
Thence, along the West-line of Diane Smith et.al. (292-1549 O.R.), S04°13'10" W a distance of 1156.32' to an iron pin found;
Thence, along the North-line of Kremer (456-1847 O.R.) N85°45'44" W a distance of 768.73' to a point;
Thence, along a new line created by this survey, N00°38'01" W a distance of 1469.05' to an iron pin found at the South-west corner of Underhill(450-477 O.R.), passing an iron pin set at 7.43 feet;
Thence, with the lines of Underhill, S89°46'07" E a distance of 293.03' to an iron pin found;
N00°48'58" W a distance of 251.36' to a point in the southerly right of way of State Route 56;
Thence, along the right of way line of State Route 56, with a curve turning to the right with an arc length of 122.95', with a radius of 241.94', with a chord bearing of S82°42'38" E, with a chord length of 121.63', to a point;
S68°09'03" E a distance of 103.25' to a point;
thence with a curve turning to the right with an arc length of 238.37', with a radius of 999.86', with a chord bearing of S61°19'15" E, with a chord length of 237.81', to a point;
thence, S35°30'33" W a distance of 15.00' to a point
S50°35'46" E a distance of 133.78 to a point';
N43°06'43" E a distance of 15.00' to a point;
thence with a curve turning to the right with an arc length of 22.39', with a radius of 999.86', with a chord bearing of S46°03'38" E, with a chord length of 22.39', to a point;
thence, S45°25'08" E a distance of 427.24' to a point;
thence with a curve turning to the right with an arc length of 100.39', with a radius of 770.71', with a chord bearing of S41°41'14" E, with a chord length of 100.32',
thence N86°19'17" W a distance of 339.37' to the point of beginning and containing 31.61 acres.

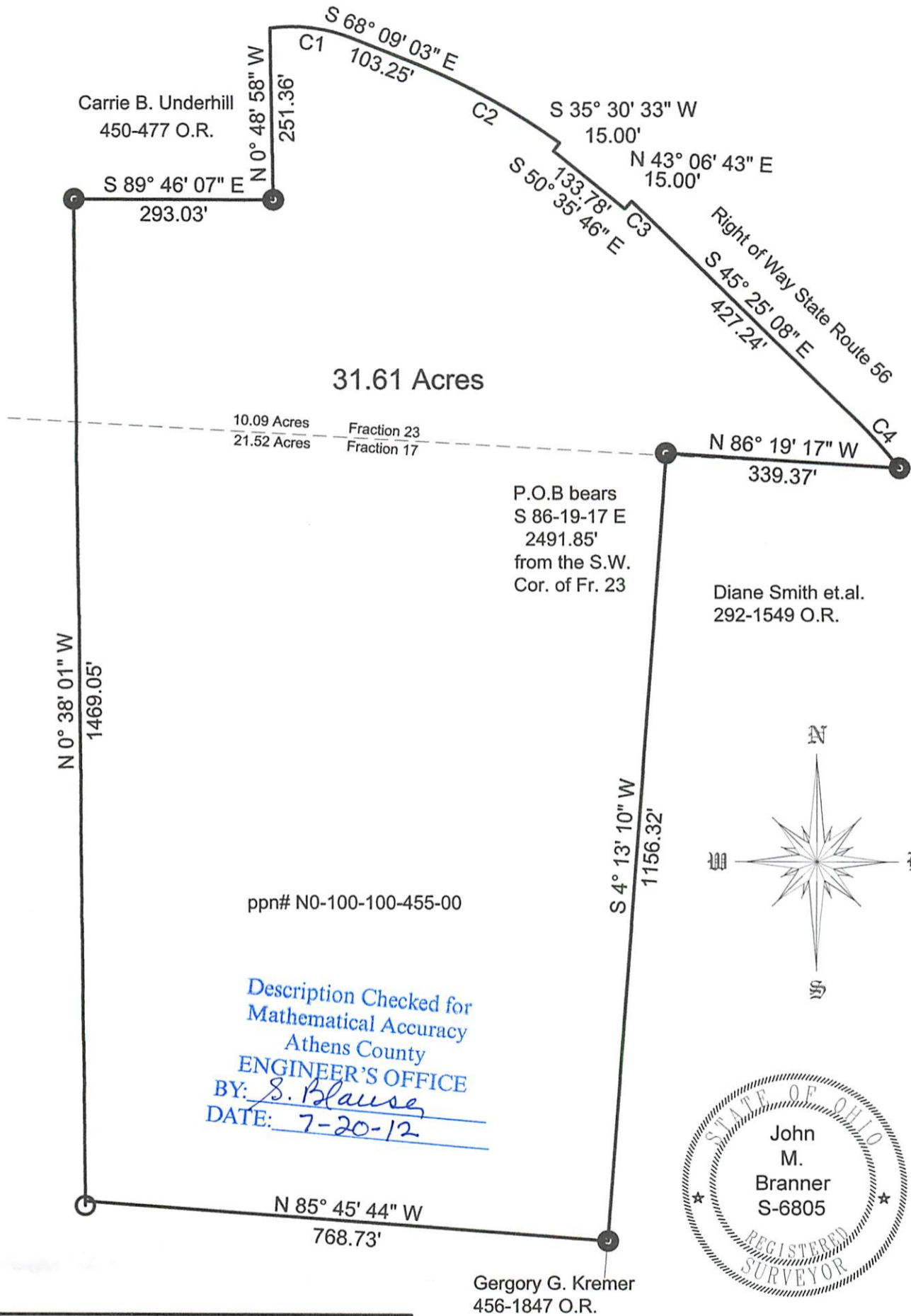
Subject to all easements and rights of way of record
Bearings based on NAD 83 , Grid North
Iron pins set are 5/8" by 30' long rebar.
The above description is based on a field survey completed July 2011 by John M. Branner P.S. 6805
Revised South-line July on 2012.
;

John M. Branner



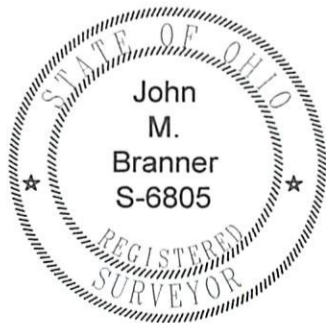
Description Checked for
Mathematical Accuracy
Athens County
ENGINEER'S OFFICE
BY: *S. Blausey*
DATE: 7-20-12

Curve	Delta Angle	Radius	Arc	Tangent	Chord	Chord Bearing
1	29°06'59"	241.94	122.95	62.83	121.63	S 82° 42' 38" E
2	13°39'35"	999.86	238.37	119.75	237.81	S 61° 19' 15" E
3	1°16'59"	999.86	22.39	11.20	22.39	S 46° 03' 38" E
4	7°27'48"	770.71	100.39	50.27	100.32	S 41° 41' 14" E



ppn# N0-100-100-455-00

Description Checked for
Mathematical Accuracy
Athens County
ENGINEER'S OFFICE
BY: S. Blause
DATE: 7-20-12



Survey of a 31.61 Acre Tract in Section 22
Fractions 17 and 23, T. 11, R.15, Waterloo Twp.
Athens County, Ohio
Surveyed July 2011

John M. Branner
John M. Branner P.S. 6805
12500 N. Peach Ridge Road
Athens, Ohio 45701
740-592-5778

Rev. July 2012

○ = Iron pin set 5/8"X30" rebar
● = Iron pin found
Bearings based on Nad 83 Grid North
Reference documents:
Tax Plat-Deeds-Surveys
Snyder P.S. 6851 Nov. 2009 Survey

