

TRACT# 2

15.925 Ac.

Situated in Section 24, T. 11, R.15, Waterloo Township, Athens County, Ohio and being a part of a tract of land described in Volume 365, Page 585 Athens County Deed Records and being more particularly described as follows:

Commencing at the South-west corner of the Southeast Quarter of Section 24, thence, N 1°02'54"E, 1382' (deed) to a fence corner; thence, along Grantor's West-line N 1°02'54"E, 1158.49' to an iron pin set, said pin being the point of beginning for the tract of land herein described:

Thence, continuing along Grantor's West-line, N 1°02'54"E, 962.31' to a point in Athens County Road 3, passing an iron pin found at 943.31'; thence, along said road S 79°35'58"E, 896.99' to a point in the intersection of County Road 3 with Township Road 266; thence, along Township Road 266, S 18°08'05"W, 590.90' to a point; thence, S 1°55'49"W, 162.78' to a point; thence, S 5°15'07"E, 87.32' to a point; thence, leaving said road, N 89°07'30"W, 718.54' to the point of beginning, passing an iron pin set at 17.54', and containing 15,925 acres

Subject to all easements and rights of way of record.

*John M. Branner*  
John M. Branner  
Registered Land Surveyor # 6805

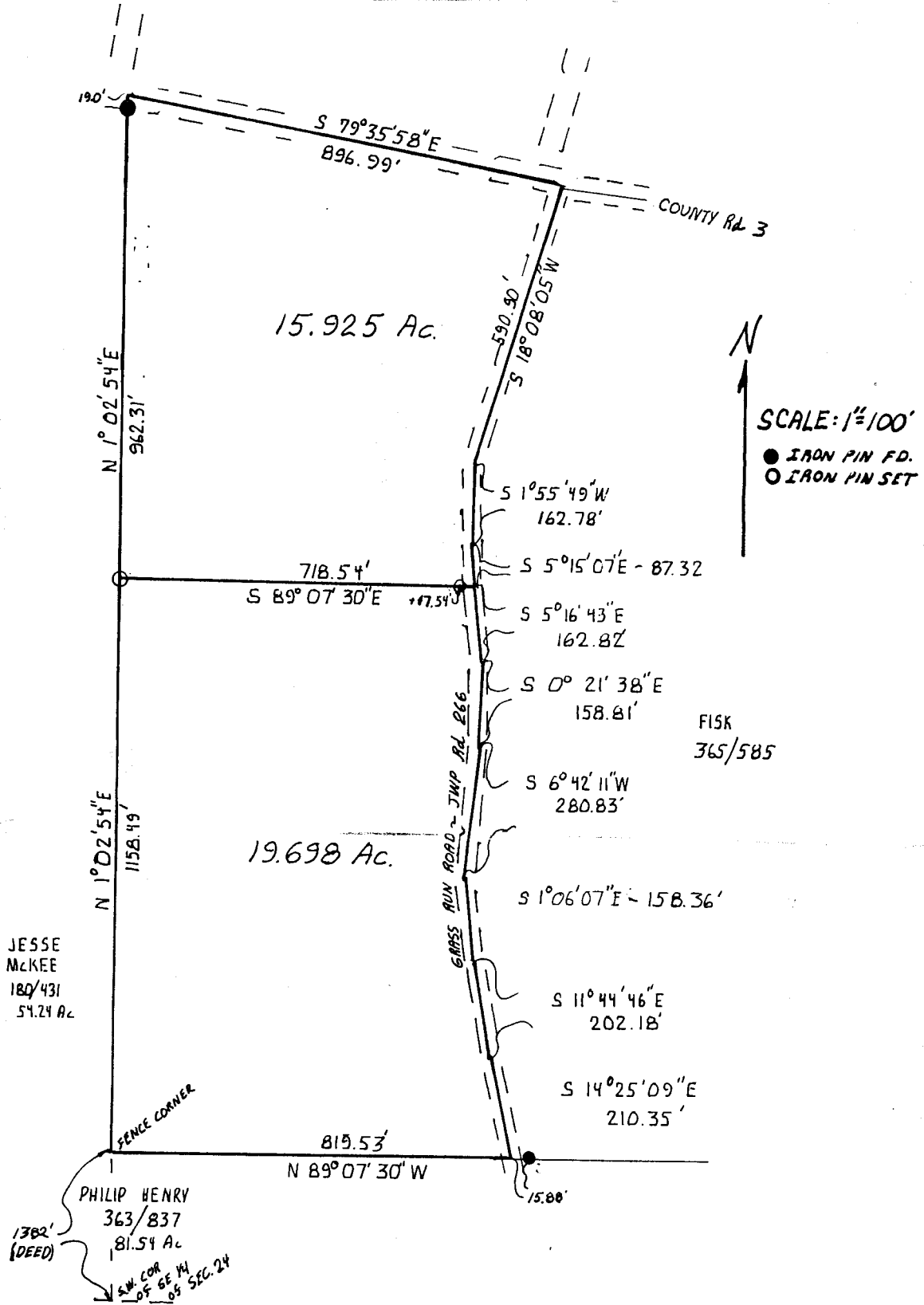


Description checked for  
Mathematical Accuracy  
ATHENS COUNTY  
ENGINEER'S OFFICE

BY: *Bob Eichenberg*  
DATE: *1/24/85*

23

WHT #24

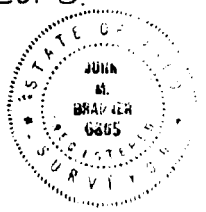


JESSE  
MCKEE  
180/431  
54.24 Ac.

PHILIP HENRY  
363/837  
81.54 Ac.  
S.W. COR  
OF 6E 1/4  
09 SEC. 24

SURVEY OF A 15.925 ACRE TRACT  
AND A 19.698 ACRE TRACT IN  
SECTION 24 T.11 R.15  
WATERLOO TWP. ATHENS Co. O.

BRANNER SURVEYING  
Rt 3 ATHENS O.  
614-592-5778  
SURVEYED JUNE 84  
*John M. Branner*  
JOHN M. BRANNER  
REG. LAND SURVEYOR-6805



24