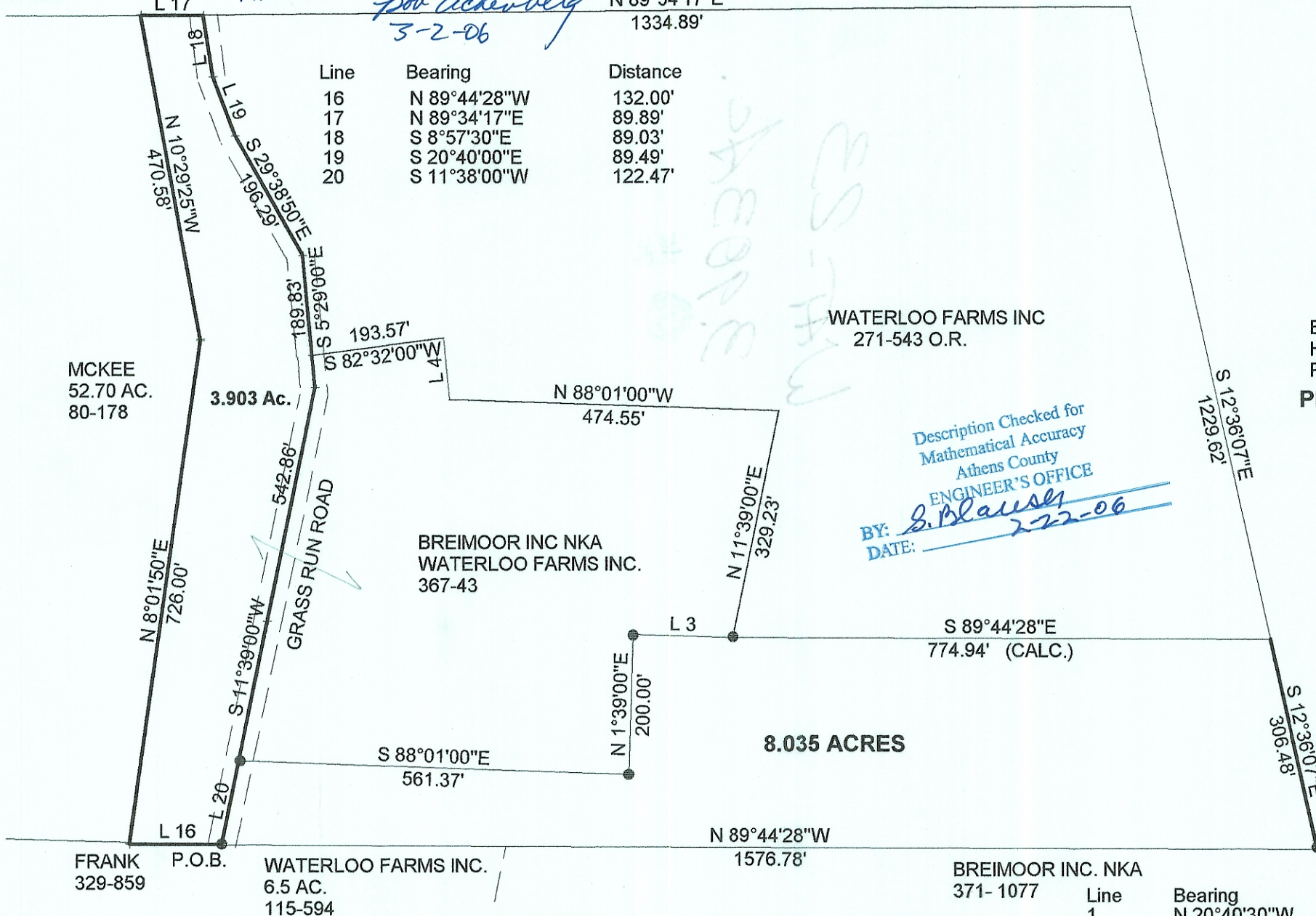


HOUDEK  
98-486

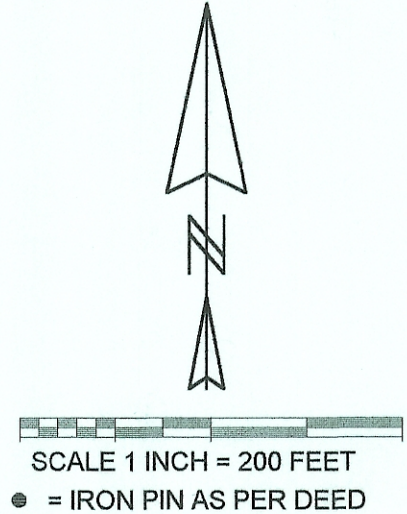
OK TO TRANSFER - HEALTH DEPT.  
APPROVAL NOT REQUIRED - PARCEL TO  
BE CONTINUOUS & CONTIGUOUS W/ 8.035 ac.  
PARCEL *Bob Eichenberg*  
3-2-06



Line	Bearing	Distance
16	N 89°44'28"W	132.00'
17	N 89°34'17"E	89.89'
18	S 8°57'30"E	89.03'
19	S 20°40'00"E	89.49'
20	S 11°38'00"W	122.47'

WATERLOO FARMS INC  
271-543 O.R.

Description Checked for  
Mathematical Accuracy  
Athens County  
ENGINEER'S OFFICE  
BY: *S. Blausley*  
DATE: *2-22-06*



BEARINGS AND DISTANCES BASED ON A SURVEY BY  
HAROLD D. WHALEY RLS 4986 ON SURVEY OF THE  
PARENT TRACT OF 11.92 ACRES  
**PLAT OF DESCRIPTION OF A 3.903 ACRE TRACT I  
SECTION 23 , T.11 , R.15 , WATERLOO TWP.  
ATHENS COUNTY, OHIO  
FEB. 2006**

BY: *John M. Branner*  
**JOHN M. BRANNER P.S. 6805  
12500 N. PEACH RIDGE ROAD  
ATHENS, OHIO 45701  
(740) 592-5778**

WATERLOO FARMS INC.  
11.69 AC.  
102-821

P.O.B. BEARS S 01 17 26 W 3135.00'  
AND N 89 44 28 W 2357.90' FROM  
THE N.E. COR. OF SECTION 23

Line	Bearing	Distance
1	N 20°40'30"W	89.49'
2	N 11°38'00"E	122.47'
3	S 88°01'00"E	143.56'
4	N 5°29'00"W	88.55'
5	N 5°29'00"W	143.50'
6	N 20°40'30"W	89.49'
7	N 6°57'30"W	89.03'

