

DESCRIPTION OF 0.375 ACRE

Situated in the Village of Buchtel, Sections 6, Township 12, Range 15, York Township, Athens County, Ohio and further described as follows:

Commencing at an iron pin found at the southwest corner of Lot No. 89, said iron pin being the true point of beginning; thence along the south line of said Lot South 88 degrees 26 minutes 20 seconds East a distance of 149.82 to an iron pin found at the southeast corner of said Lot; thence, South 01 degrees 33 minutes 42 seconds West, along the west line of Third Street extended, passing through to an iron pin found at 35.09 feet, a distance of 100.32 feet to an iron pin set; thence, South 83 degrees 13 minutes 23 seconds West a distance of 46.74 feet to an iron pin found; thence, South 86 degrees 44 minutes 45 seconds West a distance of 103.94 feet to a point; thence, North 01 degrees 33 minutes 41 seconds East, passing through an iron pin set at 7.83 feet, and iron pins found at 36.39 feet and 65.66 feet, a distance of 115.82 feet to the true point of beginning. Containing 0.375 acre and to be held continuous and contiguous with Lot No. 89 recorded in Volume 84, page 14 of the Official Records of Athens County in the Athens County Recorder's Office.

Subject to all reservations, right-of-ways, leases and easements of record.

The basis for bearings in the above description was assuming a bearing of South 88 degrees 26 minutes 20 seconds East for the south line of Lot No. 89.

The above description was prepared from an actual survey of the premises made by Joseph C. Roman, Registered Surveyor No. S-6461, in October 2002.

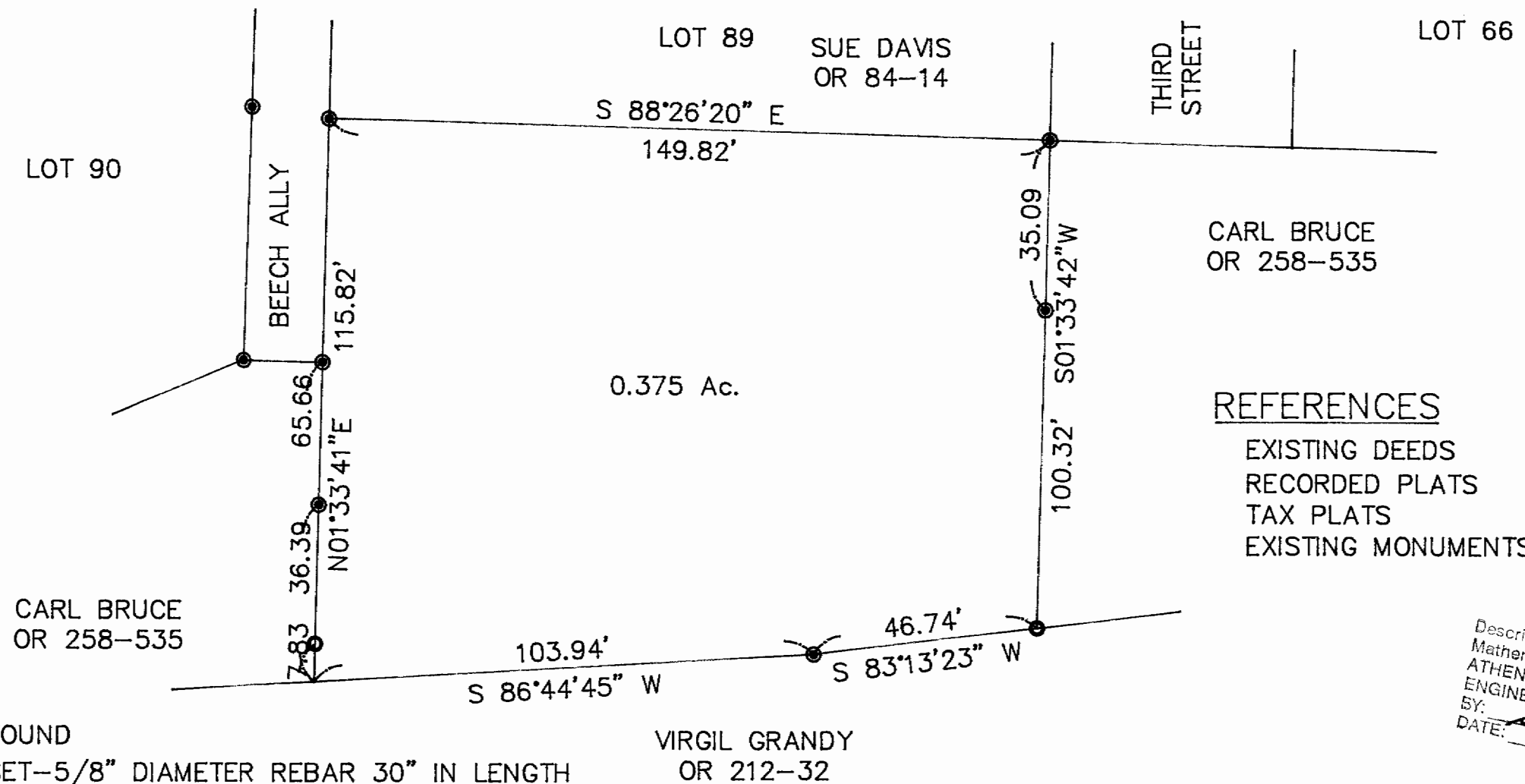
Iron pin set in the above description is a 5/8 inch diameter rebar approximately 30 inches in length with an 1-1/4 inch diameter plastic identification cap.



Description checked for
Mathematical Accuracy
ATHENS COUNTY
ENGINEER'S OFFICE
BY: S. Blaus
DATE: 12-2-02

40
YRK # 12

SURVEY PLAT OF 0.375 ACRES IN VILLAGE OF BUCHTEL SECTION 6, TOWNSHIP 12, RANGE 15 YORK TOWNSHIP, ATHENS COUNTY, OHIO



- REFERENCES**
- EXISTING DEEDS
 - RECORDED PLATS
 - TAX PLATS
 - EXISTING MONUMENTS

Description checked for
Mathematical Accuracy
ATHENS COUNTY
ENGINEERS OFFICE
BY: *S. Blausen*
DATE: *12-2-02*



ASSUMED

LEGEND

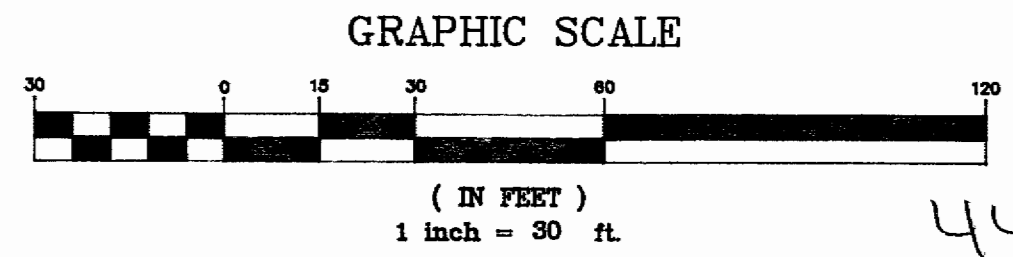
- IRON PIN FOUND
- IRON PIN SET-5/8" DIAMETER REBAR 30" IN LENGTH WITH 1-1/4" DIAMETER PLASTIC IDENTIFICATION CAP STAMPED "JOSEPH ROMAN RS-6461."

BEARING BASIS

ASSUMED BEARING OF S 88° 26' 20" E FOR THE SOUTH LINE OF LOT 89.

I HEREBY CERTIFY THIS PLAT WAS PREPARED FROM AN ACTUAL SURVEY OF THE PREMISES MADE BY ME IN OCTOBER 2002.

Joseph C. Roman
JOSEPH C. ROMAN
380 ELIZABETH STREET
NELSONVILLE, OHIO 45764
PHONE 740-753-6461



43

44