

0.086  
**DESCRIPTION OF      ACRE**

Situated in the Village of Buchtel, Sections 12, Township 12, Range 15, York Township, Athens County, Ohio and further described as follows:

Commencing at an iron pin found at the southeast corner of Lot No. 119, said iron pin being the true point of beginning; thence South 01 degrees 33 minutes 42 seconds West, along the west line of Second Street extended, a distance of 17.90 feet to an iron pin set; thence, thence, South 86 degrees 44 minutes 43 seconds West a distance of 65.28 feet to an iron pin found; thence, North 74 degrees 45 minutes 58 seconds West a distance of 86.24 feet to an iron pin found; thence, North 56 degrees 23 minutes 38 seconds West a distance of 10.89 feet to an iron pin set; thence, North 01 degrees 33 minutes 42 seconds East, a distance of 13.06 feet to an iron pin set, thence, South 88 degrees 26 minutes 14 seconds East a distance of 8.25 feet to a point, said point being the southwest corner of Lot No. 119; thence, along the south line of said Lot South 82 degrees 24 minutes 11 seconds East a distance of 150.66 feet to the true point of beginning. Containing 0.086 acre and to be held continuous and contiguous with Lot No. 119 recorded in Volume 104, page 698 of the Official Records of Athens County in the Athens County Recorder's Office.

Subject to all reservations, right-of-ways, leases and easements of record.

The basis for bearings in the above description was assuming a bearing of South 82 degrees 24 minutes 11 seconds East for the south line of Lot No. 119.

The above description was prepared from an actual survey of the premises made by Joseph C. Roman, Registered Surveyor No. S-6461, in October 2002.

Iron pin set in the above description is a 5/8 inch diameter rebar approximately 30 inches in length with an 1-1/4 inch diameter plastic identification cap.

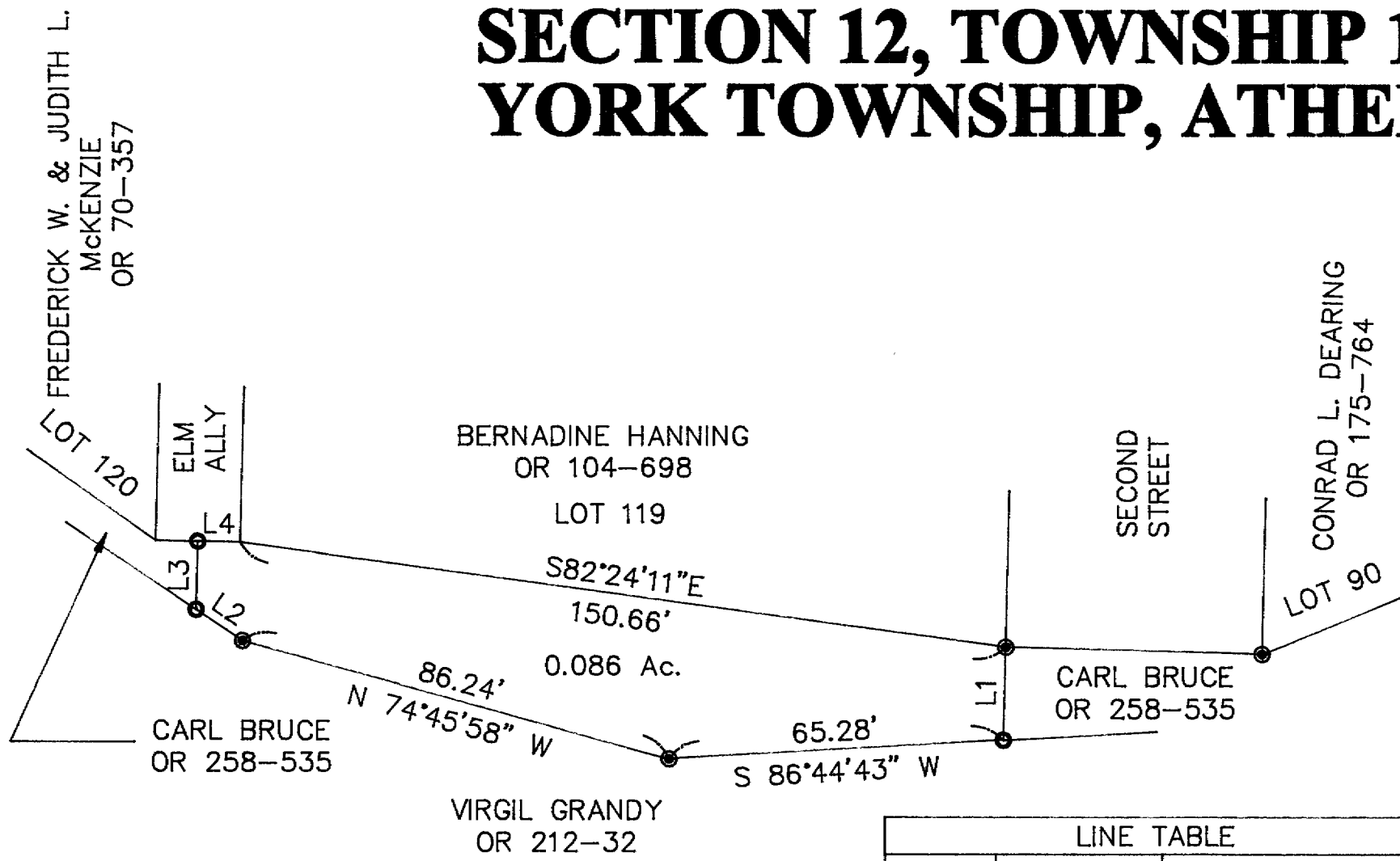
Description checked for  
Mathematical Accuracy  
ATHENS COUNTY  
ENGINEER'S OFFICE  
BY: S. Blayney  
DATE: 12-2-02



30

1R12#12

# SURVEY PLAT OF 0.086-ACRES IN VILLAGE OF BUCHTEL SECTION 12, TOWNSHIP 12, RANGE 15 YORK TOWNSHIP, ATHENS COUNTY, OHIO



Description checked for  
Mathematical Accuracy  
ATHENS COUNTY  
ENGINEER'S OFFICE  
BY: S. Blause  
DATE: 12-2-02

### REFERENCES

- EXISTING DEEDS
- RECORDED PLATS
- TAX PLATS
- EXISTING MONUMENTS

LINE TABLE		
LINE	LENGTH	BEARING
L1	17.90'	S01°33'42"W
L2	10.89'	N56°23'38"W
L3	13.06'	N01°33'42"E
L4	8.25'	S88°26'14"E

### LEGEND

- IRON PIN FOUND
- IRON PIN SET—5/8" DIAMETER REBAR 30" IN LENGTH WITH 1-1/4" DIAMETER PLASTIC IDENTIFICATION CAP STAMPED "JOSEPH ROMAN RS-6461.

I HEREBY CERTIFY THIS PLAT WAS PREPARED FROM AN ACTUAL SURVEY OF THE PREMISES MADE BY ME IN OCTOBER 2002.

Joseph C. Roman  
JOSEPH C. ROMAN  
380 ELIZABETH STREET  
NELSONVILLE, OHIO 45764  
PHONE 740-753-6461

33

### BEARING BASIS

ASSUMED BEARING OF S 82° 24' 11" E FOR THE SOUTH LINE OF LOT 119.

### GRAPHIC SCALE



( IN FEET )  
1 inch = 30 ft.

34