

BRANNER SURVEYING
12500 N. PEACH RIDGE ROAD
ATHENS, OHIO 592-5778

DESCRIPTION OF A 57.03 ACRE TRACT

Situated in Fractions 7 and 13 of Section 14 of T.12, R.15, York Township, Athens County, Ohio and being more particularly described as follows:

Beginning at the South-east corner of Section 14 ; thence, along the South-line of said section, North 87 degrees 33 minutes 15 seconds West, a distance of 595.25 feet to an iron pin set;

thence North 2 degrees 36 minutes 29 seconds West, a distance of 3208.20 feet to a railroad spike set in Township Road 407;

thence, along said road, North 77 degrees 58 minutes 35 seconds East, a distance of 309.13 feet;

thence North 89 degrees 51 minutes 40 seconds East, a distance of 140.13 feet;

thence South 78 degrees 25 minutes 00 seconds East, a distance of 200.64 feet;

thence South 86 degrees 34 minutes 40 seconds East, a distance of 291.33 feet to an iron pin set in East-line of Section 14;

thence South 3 degrees 20 minutes 38 seconds West, a distance of 3242.86 feet to the POINT OF BEGINNING; said described tract containing 57.035 acres.

Subject to all easements and rights of way of record.

The above description is based on a field survey by John M. Branner P.S. 6805 completed February 1995

Description checked for
Metrical Accuracy
ATHENS COUNTY
PLANNING DEPARTMENT
2-13-95
S. Blausen

77

BRANNER SURVEYING
12500 N. PEACH RIDGE ROAD
ATHENS, OHIO 592-5778

DESCRIPTION OF A 60.40 ACRE TRACT

Situated in Fractions 7 and 13 of Section 14 of T.12, R.15, York Township, Athens County, Ohio and being more particularly described as follows:

Commencing at the South-east corner of Section 14 ; thence, along the South-line of said section, North 87 degrees 33 minutes 15 seconds West, a distance of 595.25 feet to an iron pin set, said pin being the point of beginning for the tract of land herein described;

thence North 87 degrees 33 minutes 16 seconds West, a distance of 840.25 feet to a stone;
thence North 3 degrees 36 minutes 11 seconds East, a distance of 1373.72 feet to a stone;
thence North 89 degrees 58 minutes 38 seconds West, a distance of 198.00 feet to an iron pin set;
thence North 2 degrees 30 minutes 44 seconds East, a distance of 842.16 feet to a point;
thence North 86 degrees 15 minutes 04 seconds West, a distance of 32.36 feet to an iron pin found;
thence North 3 degrees 20 minutes 38 seconds East, a distance of 1219.73 feet to a point in Township Road 407;
thence, along said road, South 68 degrees 29 minutes 45 seconds East, a distance of 309.45 feet;
thence South 71 degrees 15 minutes 55 seconds East, a distance of 466.19 feet to a railroad spike set;
thence South 2 degrees 36 minutes 29 seconds East, a distance of 3208.20 feet to the point of beginning and containing 60.40 acres.

Subject to all easements and rights of way of record

The above description is based on a field survey by John M. Branner P.S. 6805 completed February 1995

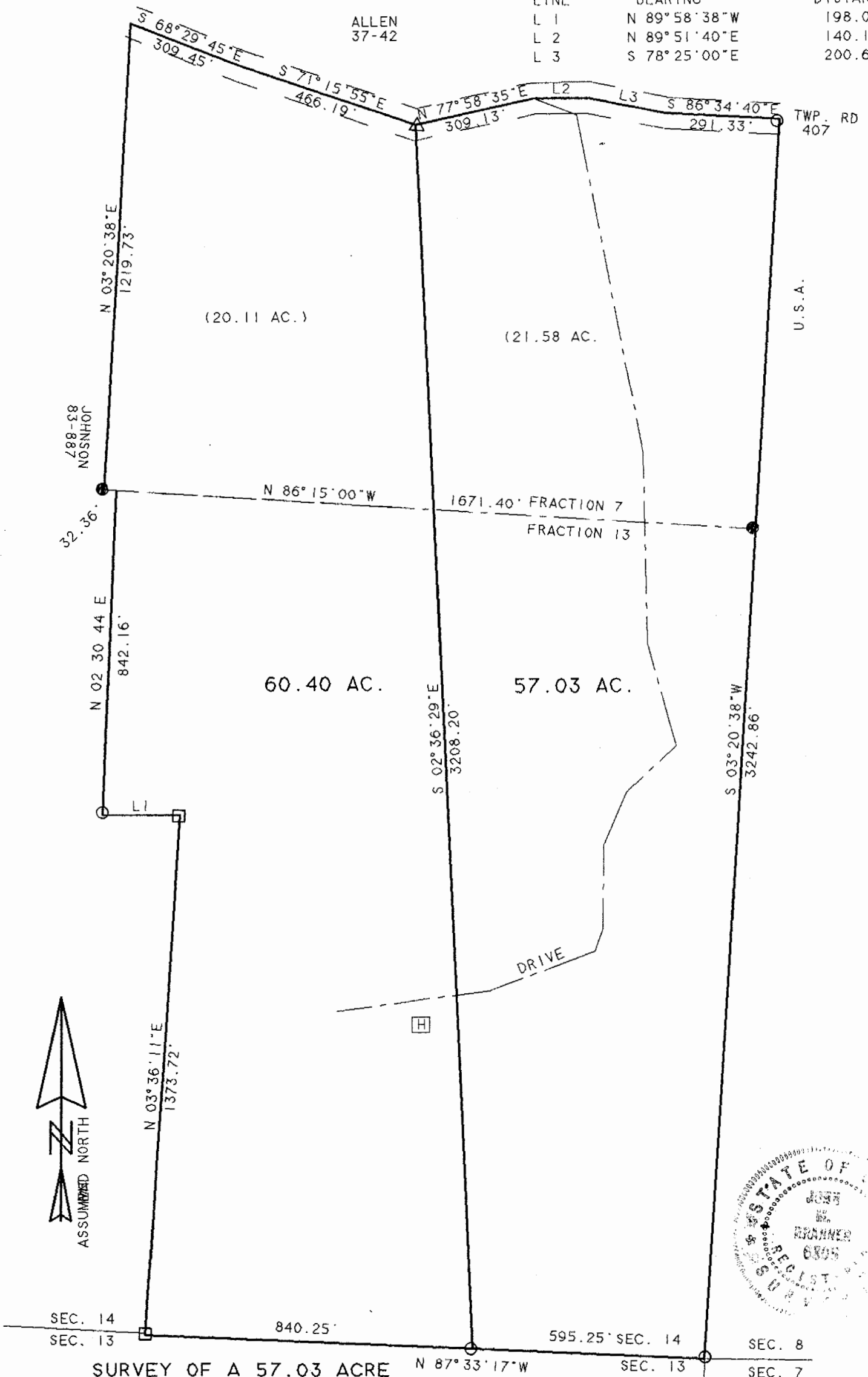
John M. Branner P.S. 6805

Reviewed & checked for
accuracy
ATHENS COUNTY
ENGINEER
S. Blaus
DATE 2-13-95

79

ALLEN
37-42

LINE	BEARING	DISTANCE
L 1	N 89° 58' 38" W	198.00'
L 2	N 89° 51' 40" E	140.13'
L 3	S 78° 25' 00" E	200.64'



SURVEY OF A 57.03 ACRE TRACT AND A 60.40 ACRE TRACT IN FR. 7 AND FR. 13 SECTION 14, T. 12, R. 15, YORK TOWNSHIP, ATHENS CO., O. SURVEYED FEB. 1995

John M. Branner
 JOHN M. BRANNER P.S. 6805
 12500 N. PEACH RIDGE ROAD
 ATHENS OHIO 592 5778

SCALE 1 INCH = 300 FEET

- - IRON PIN SET
- - IRON PIN FOUND
- - STONE FOUND
- △ - R.R.S. SET
- PERTINENT DOCUMENTS
- TAX PLAT - O FEDS

7PR #14

81