

Phone 740-753-1264
Fax 740-753-1264

Description of a 5.871 Acre Tract

Situated in Fraction 7, Section 14, T-12, R-14, York Township, Athens County, State of Ohio and being a part of a tract as described in Volume 150, Page 219 of the Official Records of Athens County and being more particularly described as follows:

BEGINNING at a point in the center TR-410 at the intersection of a creek, that bears S 56°16'39"E-3574.10', from the Northwest corner of Fraction 7,
 THENCE along the center of said road North 69°42'09"West, 92.91 feet to a point,
 THENCE leaving said road North 19°10'29"East, 141.40 feet to an iron pin found, (passing an iron pin found at 6.86 feet),
 THENCE North 65°10'37"West, 198.37 feet to a point in the center of TR-269, (passing an iron pin found at 162.48 feet),
 THENCE along the center of said road the following three courses:
 North 38°22'53"East, 131.98 feet to a point,
 North 41°38'16"East, 254.39 feet to a point,
 North 40°56'35"East, 74.77 feet to a point,
 THENCE leaving said road and along grantors north line South 89°41'47"East, 450.46 feet to a point in the center of a creek, passing a white oak stump at 18.88 feet),
 THENCE along the center of said creek the following fifteen courses:
 South 18°33'54"West, 64.22 feet to a point,
 South 85°57'17"East, 73.48 feet to a point,
 South 5°09'41"East, 106.72 feet to a point,
 South 64°45'10"West, 35.87 feet to a point,
 South 34°53'39"West, 65.24 feet to a point,
 South 44°53'50"West, 82.84 feet to a point,
 North 78°31'40"West, 87.55 feet to a point,
 South 76°46'33"West, 180.22 feet to a point,
 South 41°05'46"East, 70.00 feet to a point
 South 24°34'32"West, 41.90 feet to a point,
 South 81°24'15"West, 50.95 feet to a point,
 South 26°19'49"West, 107.49 feet to a point,
 North 63°05'54"West, 31.16 feet to a point,
 South 59°34'10"West, 57.10 feet to a point,
 South 41°31'09"West, 84.74 feet to the point of beginning and containing 5.871 Acres.

Description checked for
 Mathematical Accuracy
 ATHENS COUNTY
 ENGINEER'S OFFICE
 BY: S. Blause
 DATE: 8-20-01

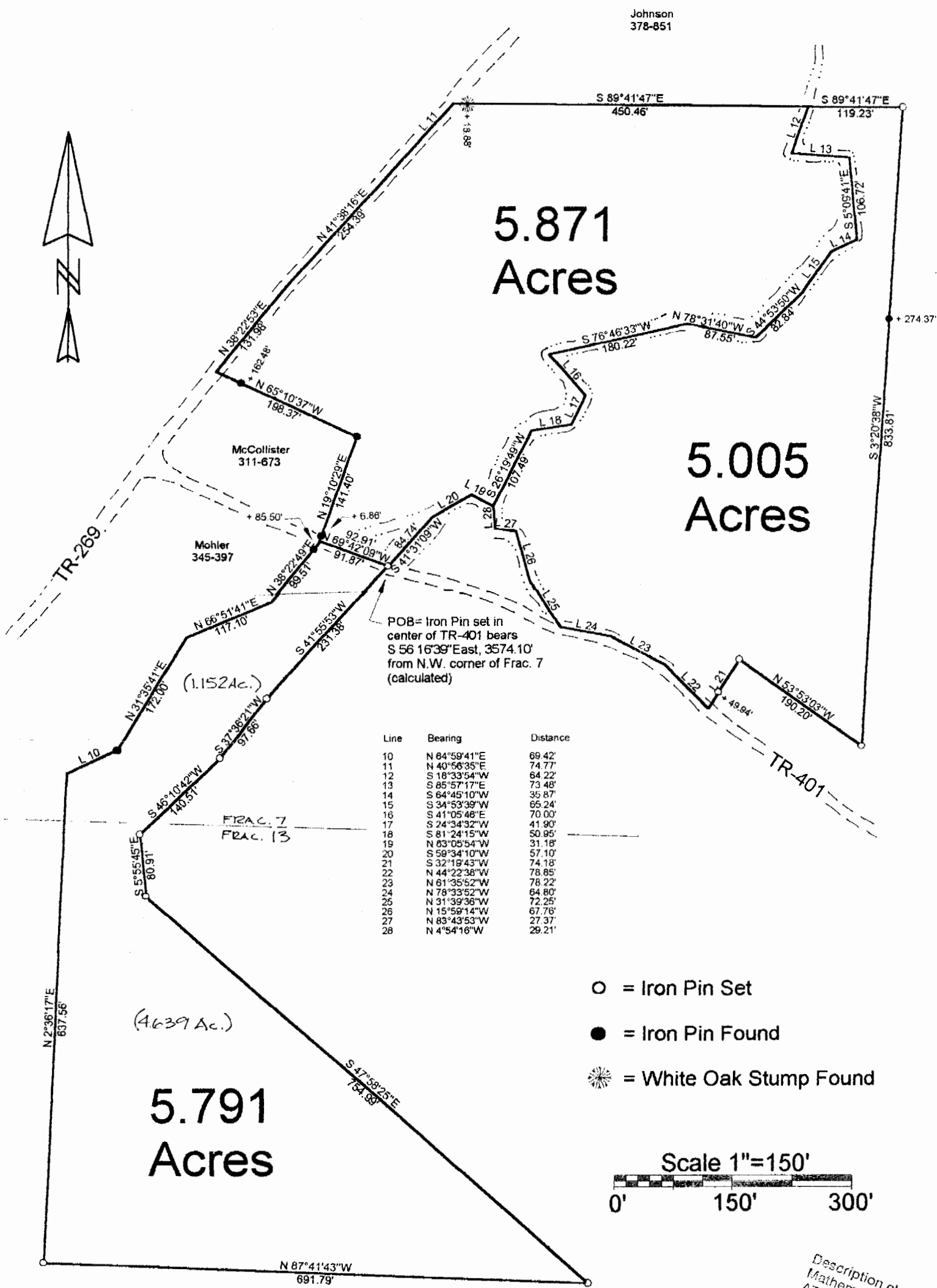
Bearings are to an assumed meridian and are for angular determination only
Subject to all Easements, Road Rights of Way, or Railroad Rights Way being Fee Simple or otherwise as may still exist over and across said premises and being of record.



42214 #

34

35



Description checked for
Mathematical Accuracy
ATHENS COUNTY
ENGINEER'S OFFICE
BY: *S. Blawie*
DATE: *8-20-01*

PLAT of SURVEY OF THREE TRACTS
 SURVEYED for JEFF FREER, et al
 SUBDIVISION FRACTION 7 & 13
 TOWNSHIP YORK SECTION 14 TOWN 12 RANGE 15
 CORPORATION - COUNTY ATHENS STATE OHIO
 SCALE 1" = 150' DATE AUG. 1, 2001

KENNETH E. HIGHLAND
80 FAYETTE STREET
NELSONVILLE, OHIO 45764
758-1264

Kenneth E. Highland
Kenneth E. Highland S-7581

