

C. TIM NEWMAN
Professional Surveyor

66 Elmwood Place
Athens, Ohio 45701

740-594-1884
FAX 740-594-9413



Guy D. Kenneer
327-468 OR

Plat of Survey of 5.382 Acres
Situating in Fraction 13, Section 14, Town 12,
Range 15, York Township, Athens County, Ohio
Surveyed January 2008 for:
Ken Handa

Prior Deed Harold E. and Esther E. Lowery 402-60 OR
4.513 is an existing tract 4 of 402-60 OR
0.869 acres surveyed from tract 3 of 402-60 OR

Total 234,426 sq. ft.
5.382 acres

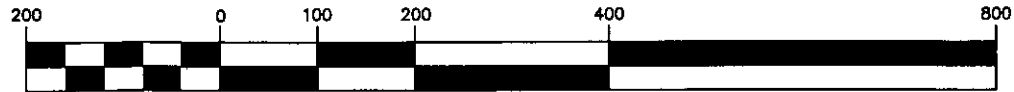
Description Checked for
Mathematical Accuracy
Athens County
ENGINEER'S OFFICE

BY: S. Blausey
DATE: 1-31-08

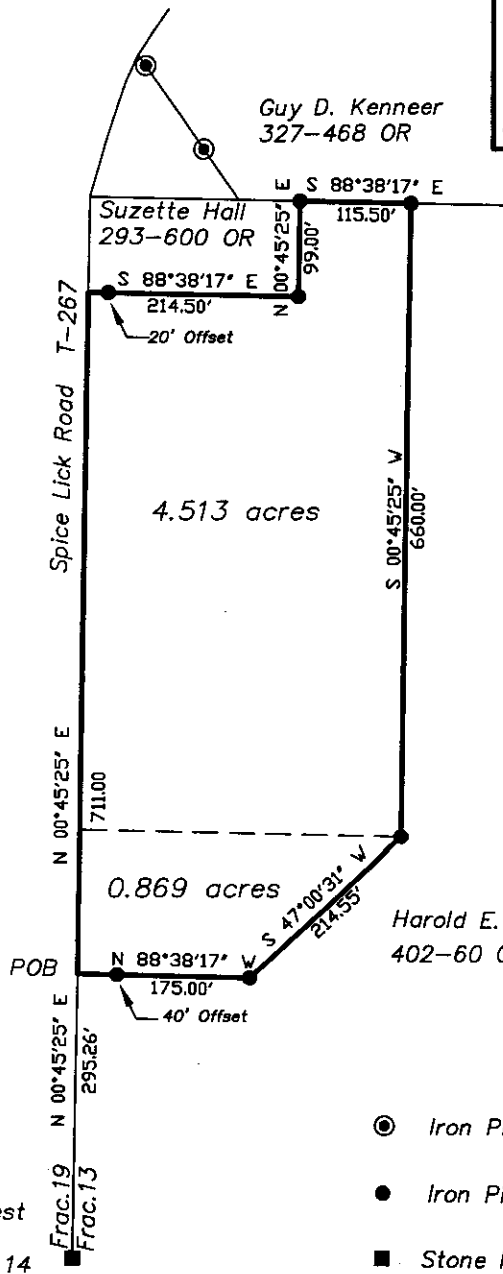
Charles T. Newman
Charles T. Newman



GRAPHIC SCALE



(IN FEET)
1 inch = 200 ft.



- Iron Pin Found
- Iron Pin Set
- Stone Found