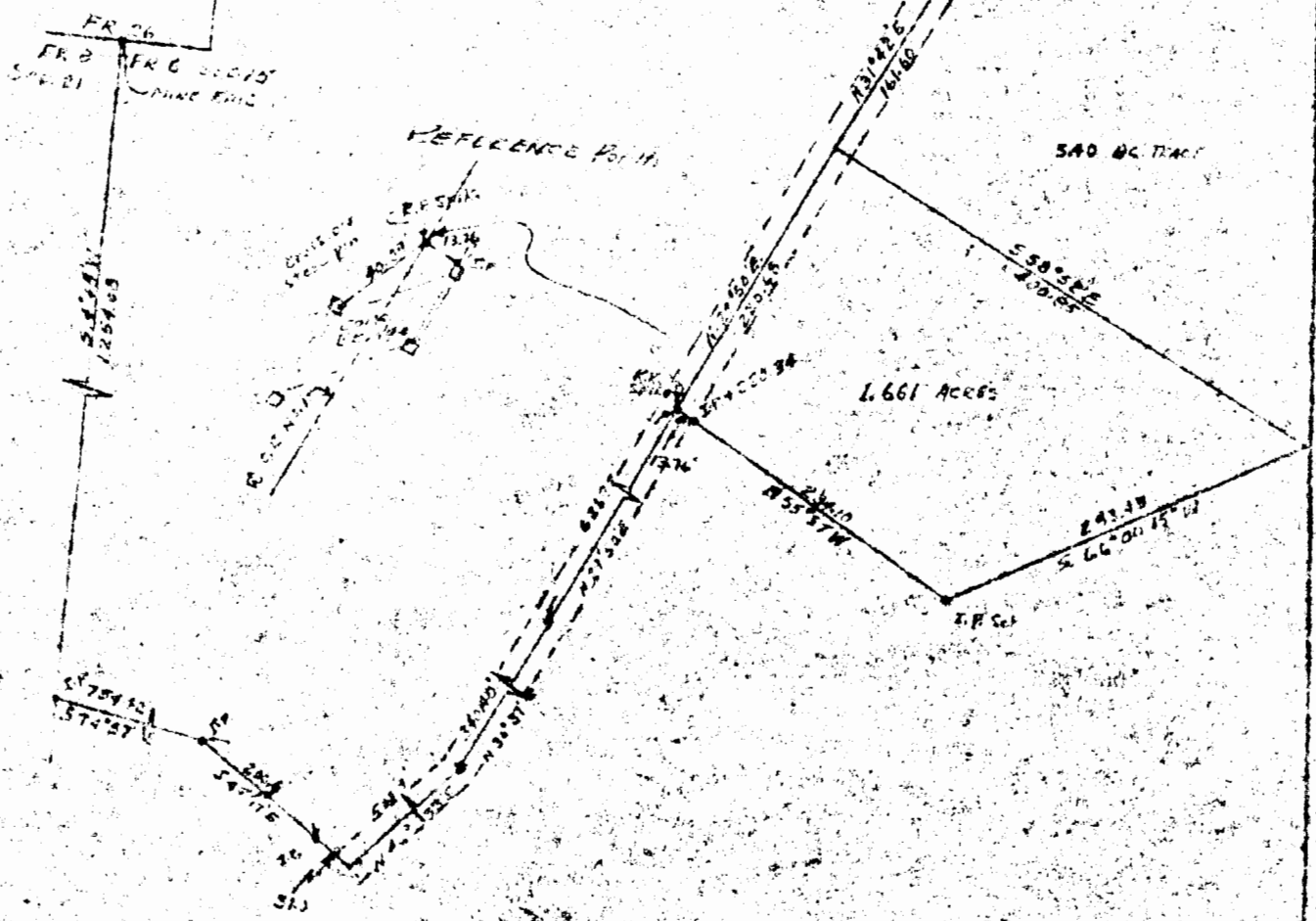


Sec. 15  
York  
302-597

SCALE 1" = 100'



SURVEY OF A 1.661 ACRES TRACT BY P.M. 6, SEC. 15, TOWNSHIP, RANGE 15,  
YORK TOWNSHIP, ATHENS COUNTY, OHIO BY E.A. COTTINGHAM

SURVEYED APRIL 27, 1971 BY HAROLD D. VINALEY

Harold D. Vinaley  
KCB SURV. NO. 4936

14

Sec. 15  
York  
302-597