

Being situated in Fraction 6, Section 21, Township 12 Range 15, in the Township of York, County of Athens, State of Ohio and being further described as follows:

Beginning at an iron pin at the southwest corner of Fraction 6 said corner being the true point of beginning; thence, South 83 degrees 52 minutes 29 seconds East a distance of 191.83 feet, passing through an iron pin at 171.83 feet, to a P.K. nail in the center of County Road No. 1; thence, along the center of said road North 23 degrees 08 minutes 58 seconds East a distance of 104.99 feet to a railroad spike; thence, North 17 degrees 07 minutes 13 seconds East a distance of 527.08 feet to a railroad spike; thence, North 24 degrees 15 minutes 09 seconds East a distance of 193.58 feet to a P.K. nail at the intersection of the center lines of County Road No. 1 and County Road No. 73; thence, along the center of County Road No. 73, South 82 degrees 35 minutes 53 seconds West a distance of 300.01 feet to a P.K. nail; thence, South 74 degrees 38 minutes 58 seconds West a distance of 69.81 feet; thence, South 66 degrees 54 minutes 22 seconds West a distance of 9.72 feet to a P.K. nail; thence, South 7 degrees 36 minutes 39 seconds West a distance of 701.53 feet, passing through an iron pin at 20 feet, to the true point of beginning.

Containing 4.64 acres

Subject to all legal easements and right-of-ways of record.

The above description is prepared from an actual survey done under the supervision of Joseph C. Roman Registered Surveyor #6461.

Description checked for
Mathematical Accuracy
ATHENS COUNTY
ENGINEER'S OFFICE

BY

DATE

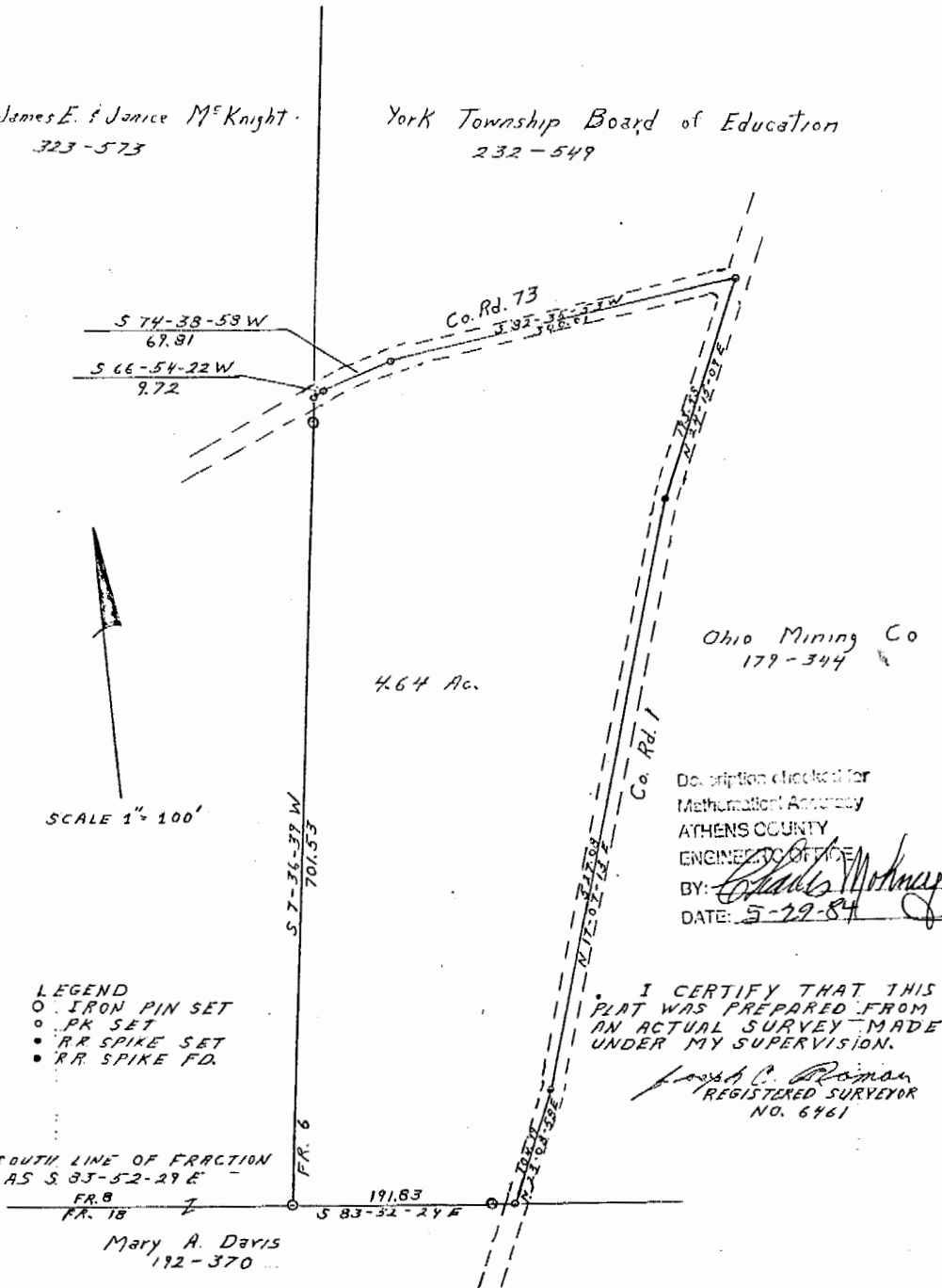
Charles Morney
5-29-84

TRK #21
6

PART OF FRACTION 6 SECTION 21
 TOWNSHIP 12 RANGE 15
 YORK TOWNSHIP, ATHENS COUNTY, OHIO

James E. & Janice M^e Knight
 323-573

York Township Board of Education
 232-549



Ohio Mining Co
 179-344

Description checked for
 Mathematical Accuracy
 ATHENS COUNTY
 ENGINEER'S OFFICE

BY: *Charles McKinney*
 DATE: 5-29-84

- LEGEND
 ○ IRON PIN SET
 ○ PK SET
 ● RR SPIKE SET
 ● RR SPIKE FD.

I CERTIFY THAT THIS
 PLAT WAS PREPARED FROM
 AN ACTUAL SURVEY MADE
 UNDER MY SUPERVISION.

Joseph C. Roman
 REGISTERED SURVEYOR
 NO. 6461

SOUTH LINE OF FRACTION
 6 AS S 83-52-24 E
 FR. 8
 FR. 18

Mary A. Davis
 192-370