

**DESCRIPTION OF PART OF OUT LOT 6  
IN THE CITY OF NELSONVILLE**

Being a part of Out Lot Six (6) in the City of Nelsonville, Section Twenty-four (24), Township Twelve (12), Range Fifteen (15), York Township, Athens County, Ohio and further described as follows:

TRACT I: Beginning at an iron pin found on the south line of twelve (12) foot alley, said iron pin being the true point of beginning and by previous description recorded in the Official Records of Athens County Volume 145, page 346, being twelve (12.00) feet South seven (7) degrees twenty-seven (27) minutes zero (00) seconds West and ninety-nine and six tenths (99.60) feet North eighty-two (82) degrees thirty-three (33) minutes zero (00) seconds West from the southwest corner of Lot Ten (10); thence, North eighty-two (82) degrees thirty-three (33) minutes zero (00) seconds West a distance of seventy-four (74.00) feet to a point; thence, South seven (7) degrees twenty-seven (27) minutes zero (00) seconds West a distance of one hundred sixty-nine and forty-nine hundredths (169.49) feet to a point; thence, South sixty-seven (67) degrees thirty-two (32) minutes zero (00) seconds East a distance of eighty-three and fifty-six hundredths (83.56) feet to a point; thence, North five (5) degrees twenty-six (26) minutes twenty-nine (29) seconds East a distance of one hundred ninety-one and twenty-six hundredths (191.26) feet to the true point of beginning. Containing three hundred nineteen thousandths (0.319) acre.  
LAST DEED REFERENCE: Volume 360, page 29 of Athens County Record of Deeds in the Athens County Recorder's Office.

TRACT II: Beginning at an iron pin found on the south line of twelve (12) foot alley, said iron pin by previous description recorded in the Official Records of Athens County Volume 145, page 346, being twelve (12.00) feet South seven (7) degrees twenty-seven (27) minutes zero (00) seconds West and ninety-nine and six tenths (99.60) feet North eighty-two (82) degrees thirty-three (33) minutes zero (00) seconds West from the southwest corner of Lot Ten (10); thence, North eighty-two (82) degrees thirty-three (33) minutes zero (00) seconds West a distance of seventy-four (74.00) feet to a point; thence, South seven (7) degrees twenty-seven (27) minutes zero (00) seconds West a distance of one hundred sixty-nine and forty-nine hundredths (169.49) feet to a point, said point being the true point of beginning; thence, continuing South seven (7) degrees twenty-seven (27) minutes zero (00) seconds West a distance of thirty and two tenths (30.20) feet to a point on the north right-of-way line of Canal Street; thence, along said right-of-way line, South sixty-six (66) degrees fifteen (15) minutes zero (00) seconds East a distance of ninety-one and thirty-seven hundredths (91.37) feet to a point; thence, leaving said right-of-way line, North four (4) degrees forty-four (44) minutes forty-seven (47) seconds East a distance of thirty-three and seventeen hundredths (33.17) feet to a point; thence, North seventy-one (71) degrees fifty-four (54) minutes zero (00) seconds West a distance of five (5.00) feet to a point; thence, North sixty-seven (67)

Description checked for  
Mathematical Accuracy  
ATHENS COUNTY  
ENGINEER'S OFFICE  
BY: J. Blause  
DATE: 8-9-94

56  
PR # 24

degrees thirty-two (32) minutes zero (00) seconds West a distance of eighty-four and nine hundredths (84.09) feet to the true point of beginning. Containing sixty-three thousandths (0.063) acre and being a part of the Marginal Canal Lands as shown on the plats of said Lands in the Athens County Recorder's Office.

LAST DEED REFERENCE: Volume 175, page 514 of Records of Deeds of Athens County in the Athens County Recorders Office.

The above two tracts contains three hundred eighty-two thousandths (0.382) acre.

Subject to all legal right-of-ways, easements and leases of record.

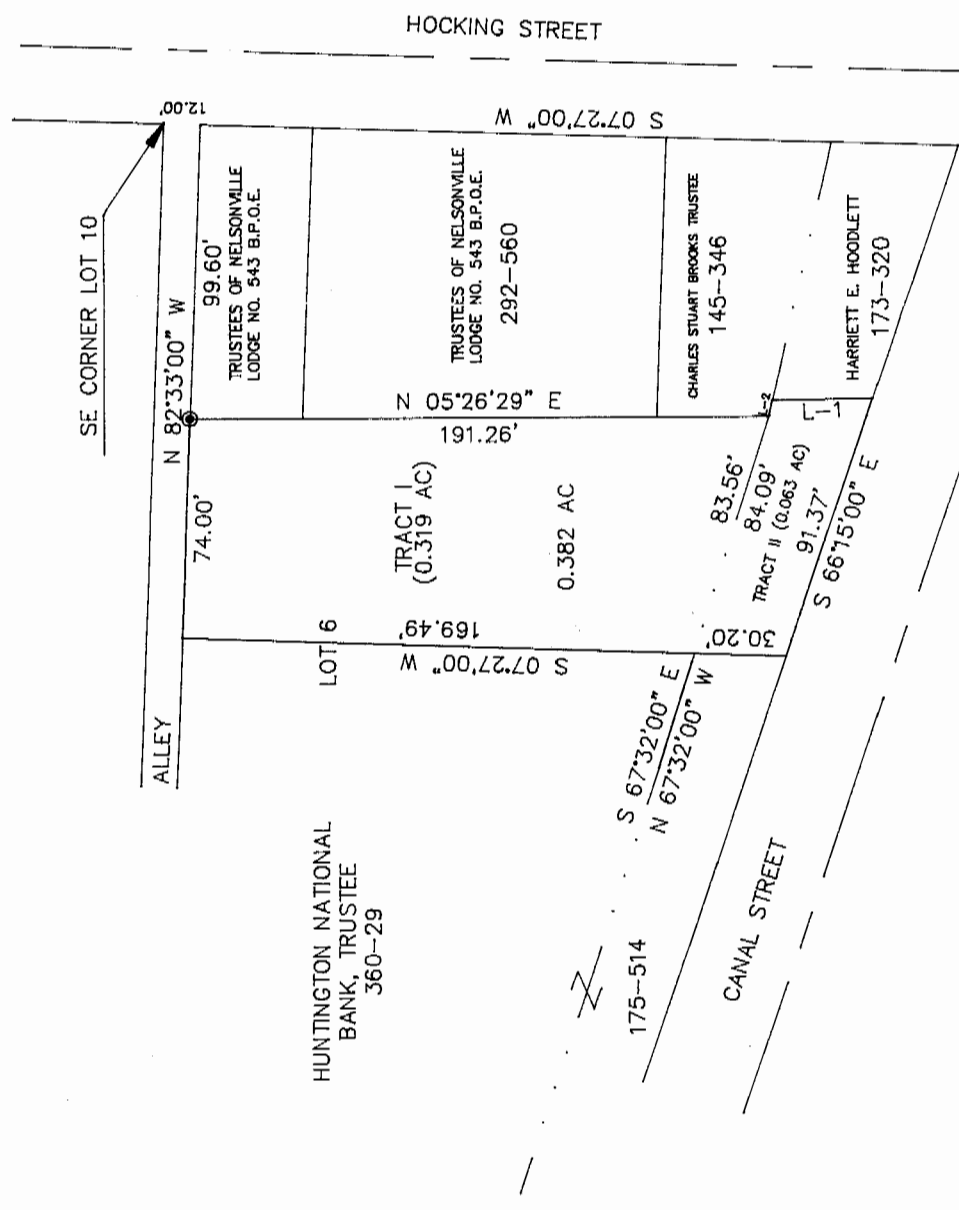
The basis for the bearings in the above description is assuming a bearing of South seven (7) degrees twenty-seven (27) minutes zero (00) seconds West for the west line of Hocking Street.

The above description was prepared from an actual survey of the premises made by Joseph C. Roman, Registered Surveyor No. s-6461 in August 1994 and from calculations made using information from existing recorded plats.

Description checked for  
Mathematical Accuracy  
ATHENS COUNTY  
ENGINEER'S OFFICE  
BY: S. Blauvelt  
DATE: 8-9-94

99

PLAT OF 0.382 ACRES  
 PART OF OUT LOT 6, CITY OF NELSONVILLE  
 SECTION TWENTY-FOUR (24), TOWNSHIP TWELVE (12), RANGE FIFTEEN (15)  
 ATHENS COUNTY, OHIO

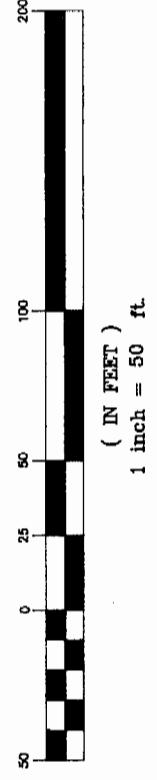


● IRON PIN FOUND

BASIS FOR BEARINGS IS THE WEST LINE OF HOCKING STREET BEING ASSUMED AS S 7°27'00" W.

ASSUMED

GRAPHIC SCALE



LINE	DIRECTION	DISTANCE
L-1	N 04°44'47" E	33.17'
L-2	N 71°54'00" W	5.00'

I HEREBY CERTIFY THIS PLAT WAS PREPARED FROM AN ACTUAL SURVEY OF THE PREMISES MADE BY ME IN AUGUST 1994.

*Joseph C. Roman*  
 JOSEPH C. ROMAN, REGISTERED SURVEYOR NO. S-646T