

DEED DESCRIPTION

TOWNSHIP 12 NORTH, RANGE 15 WEST, OHIO RIVER SURVEY
YORK TOWNSHIP, ATHENS COUNTY, OHIO

SECTIONS 27 AND 33, FRACTIONS 11 AND 31

Being situated in Fraction 11 and 31, Sections 27 and 33, Township 12 North, Range 15 west, York Township, Athens County, Ohio and further described as follows:

Beginning at a found United State Forestry Service monument on the east line of Fraction 31, said monument being the true point of beginning and being at a point, by previous description recorded in Volume 196, page 754 of the Official Records of Athens County as being North 4 degrees 48 minutes East 1752.70 feet of the southeast corner of Fraction 31; thence, continuing along the east line of Fraction 31, North 4 degrees 48 minutes East a distance of 838.58 feet to a point; thence, North 86 degrees 40 minutes 45 seconds West a distance of 886.96 feet to an iron pin found; thence, South 4 degrees 48 minutes West, passing through an iron pin found at 306.13 feet and an iron pin found at 429.83 feet, distance of 501.07 feet to a point in the center of relocated Township Road No. 276; thence along the center of said township road the following courses and distances: South 51 degrees 46 minutes 30 seconds East a distance of 316.03 feet to the point of curvature, of a curve curving to the left; thence, along said curve, having a radius of 4583.66 feet, a chord of 515.88 feet bearing South 55 degrees 00 minutes 04 seconds East, through a central angle of 06 degrees 27 minutes 07 seconds, a distance of 516.15 feet to the point of tangent of said curve; thence, South 58 degrees 25 minutes 48 seconds East a distance of 409.25 feet to the point of curvature of a curve curving to the left; thence, along said curve, having a radius of 1254.60 feet, a chord of 171.54 feet bearing South 62 degrees 21 minutes East, through a central angle of 07 degrees 50 minutes 24 seconds, a distance of 171.67 feet to the point of tangent of said curve; thence, South 66 degrees 16 minutes 12 seconds East a distance of 325.59 feet to the point of curvature of a curve curving to the right; thence, along said curve, having a radius of 1221.55 feet, a chord of 135.05 feet bearing South 63 degrees 06 minutes 04 seconds East, through a central angle of 06 degrees 20 minutes 16 seconds, a distance of 135.12 feet to the point of tangent of said curve; thence, South 59 degrees 55 minutes 56 seconds East a distance of 151.56 feet to the point of curvature of a curve curving to the left; thence, along said curve, having a radius of 1968.23 feet, a chord of 388.38 feet bearing South 65 degrees 35 minutes 40 seconds East, through a central angle of 11 degrees 19 minutes 27 seconds, a distance of 389.01 feet to the point of tangent of said curve; thence, South 71 degrees 15 minutes 23 seconds East a distance of 235.73 feet to a point; thence,

46

YR#27

leaving said road, North four 55 degrees 21 minutes 21 seconds East, a distance of 91.40 feet to an iron pin set; thence, North 39 degrees 02 minutes 32 seconds West a distance of 220.15 feet to a USFS monument found; thence, North 18 degrees 01 minutes 19 seconds West a distance of 168.01 feet to a USFS monument found; thence, North 60 degrees 51 minutes 43 seconds West a distance of 173.85 feet to a USFS monument found; thence, North 60 degrees 48 minutes 51 seconds West a distance of 144.39 feet to a USFS monument found; thence, North 79 degrees 28 minutes 45 seconds West a distance of 388.28 feet to a USFS monument found; thence, North 67 degrees 24 minutes 16 seconds West a distance of 322.95 feet to a USFS monument found; thence, North 53 degrees 27 minutes 33 seconds West a distance of 139.51 feet to a USFS monument found; thence, North 78 degrees 32 minutes 43 seconds West a distance of 187.04 feet to a point referenced by a USFS monument found which bears North 58 degrees 26 minutes 23 seconds West 9.92 feet from said point; thence, North 55 degrees 52 minutes 12 seconds West a distance of 87.17 feet to the true point of beginning. Containing 25.941 acres of which 11.666 acres being in Fraction 31, also being a part of property described in Volume 196 page 754 of Official Records of Athens County (Parcel ID No. PO1-00100267-00); 0.958 acres being in Fraction 31, also being part of property described in Volume 271, page 1840 of Official Records of Athens County (Parcel ID No. PO1-00100268-00) and 13.317 acres, of which 3.446 acres are in Fraction 31 (Parcel ID No. PO1-00100269-00) and 9.871 acres in Fraction 11 (Parcel ID No. PO1-00100185-00), also, being a part of property described in Volume 127, page 629 Record of Deeds of Athens County.

SUBJECT to all legal leases, easements and right-of-ways of record.

LAST DEED REFERENCES:

Volume 196 page 754 of Official Records of Athens County for 11.666 acres;

Volume 271, page 1840 of Official Records of Athens County for 0.958 acres and

Volume 127 page 629 of Record of Deeds of Athens County in the Athens County Recorder's Office for the 13.317 acres.

All iron pins set in the above description are five-eighths (5/8) diameter rebar thirty (30) inches in length with an one and quarter (1-1/4) inch diameter plastic identification cap.

The basis for bearings in the above description is deed bearing of North 04 degrees 48 minutes East for the east line of Fraction 31 as recorded in Volume 196, page 754 of Official Records of Athens County Ohio.

The above description was prepared from an actual survey of the premises made in april and May 1999 by Joseph C. Roman, Registered Surveyor No. s-6461.

Description checked for
Mathematical Accuracy
ATHENS COUNTY
ENGINEERS OFFICE
BY: S. Blause
DATE: 6-4-99

47

PLAT OF SURVEY

25.941 ACRES

FRACTIONS 11 & 31, SECTIONS 27 & 33

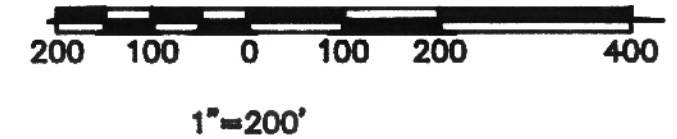
TOWNSHIP 12N, RANGE 15W

YORK TOWNSHIP, ATHENS COUNTY, OHIO

USA
299-11

LEGEND

- IRON PIN FOUND
- USFS MONUMENT FOUND
- IRON PIN SET-5/8" DIAMETER REBAR APPROXIMATELY 30" IN LENGTH WITH AN 1-1/4" DIAMETER PLASTIC IDENTIFICATION CAP

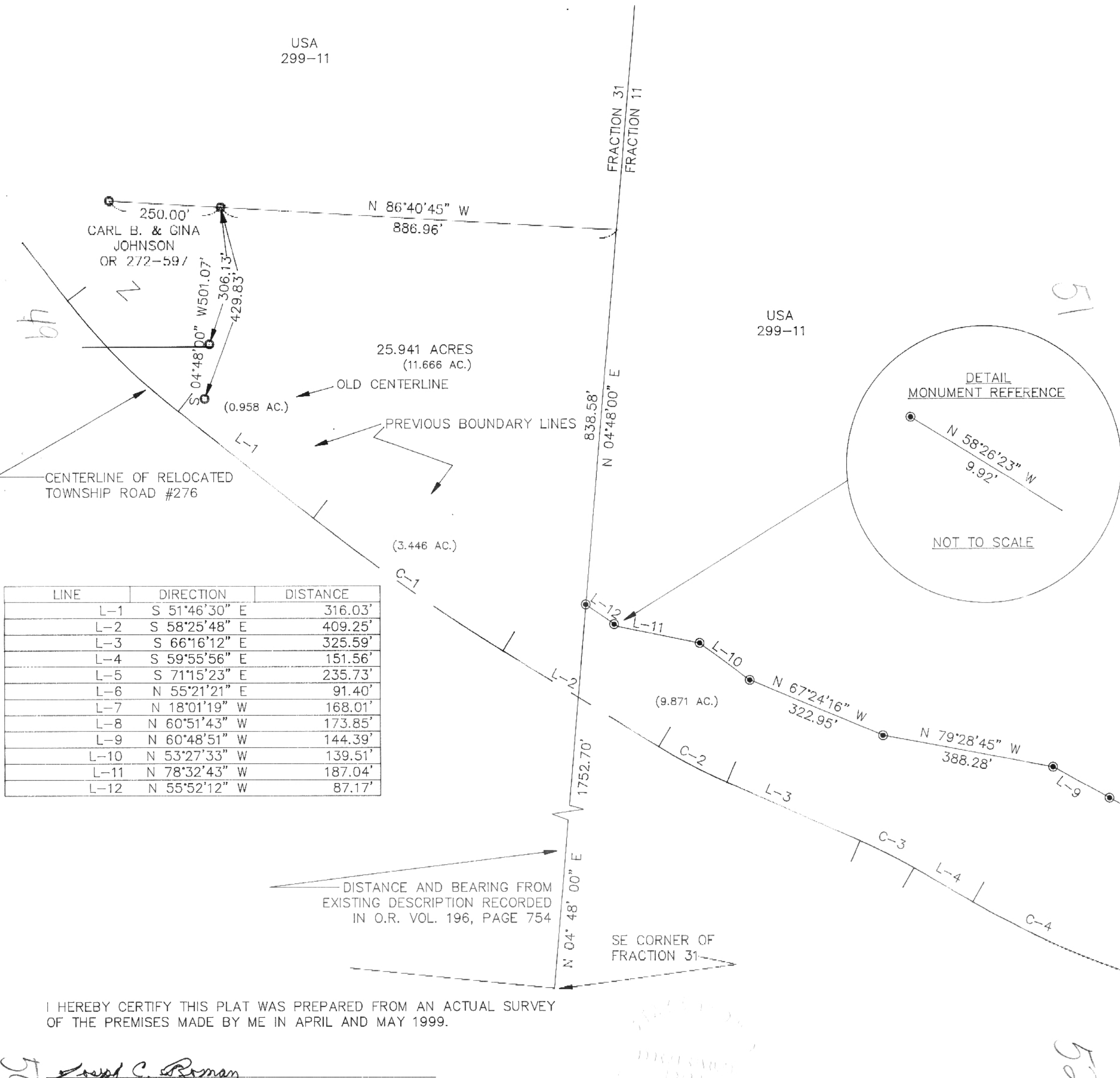


REFERENCES
EXISTING DEEDS
PREVIOUS SURVEYS
SURVEY PLATS
TAX PLATS

BEARING BASIS-DEED BEARING OF N 04° 48' 00" E FOR THE EAST LINE OF FRACTION 31 AS RECORDED IN VOL. 196, PAGE 754 OF OFFICIAL RECORDS OF ATHENS COUNTY

Description checked for
Mathematical Accuracy
ATHENS COUNTY
ENGINEERS' OFFICE
BY: *S. P. Kaurer*
DATE: *6-4-99*

CURVE	RADIUS	LENGTH	CHORD	BEARING	DELTA
C-1	4583.66'	516.15'	515.88'	S 55°00'04" E	06°27'07"
C-2	1254.60'	171.67'	171.54'	S 62°21'00" E	07°50'24"
C-3	1221.55'	135.12'	135.05'	S 63°06'04" E	06°20'16"
C-4	1968.23'	389.01'	388.38'	S 65°35'40" E	11°19'27"



LINE	DIRECTION	DISTANCE
L-1	S 51°46'30" E	316.03'
L-2	S 58°25'48" E	409.25'
L-3	S 66°16'12" E	325.59'
L-4	S 59°55'56" E	151.56'
L-5	S 71°15'23" E	235.73'
L-6	N 55°21'21" E	91.40'
L-7	N 18°01'19" W	168.01'
L-8	N 60°51'43" W	173.85'
L-9	N 60°48'51" W	144.39'
L-10	N 53°27'33" W	139.51'
L-11	N 78°32'43" W	187.04'
L-12	N 55°52'12" W	87.17'

I HEREBY CERTIFY THIS PLAT WAS PREPARED FROM AN ACTUAL SURVEY OF THE PREMISES MADE BY ME IN APRIL AND MAY 1999.

Joseph C. Roman
JOSEPH C. ROMAN, REGISTERED SURVEYOR NO. S-6461
68 W. COLUMBUS STREET
NELSONVILLE, OHIO
740-753-2697

WARNER ALLEN &
RUTH ANN ADAMS
298-491