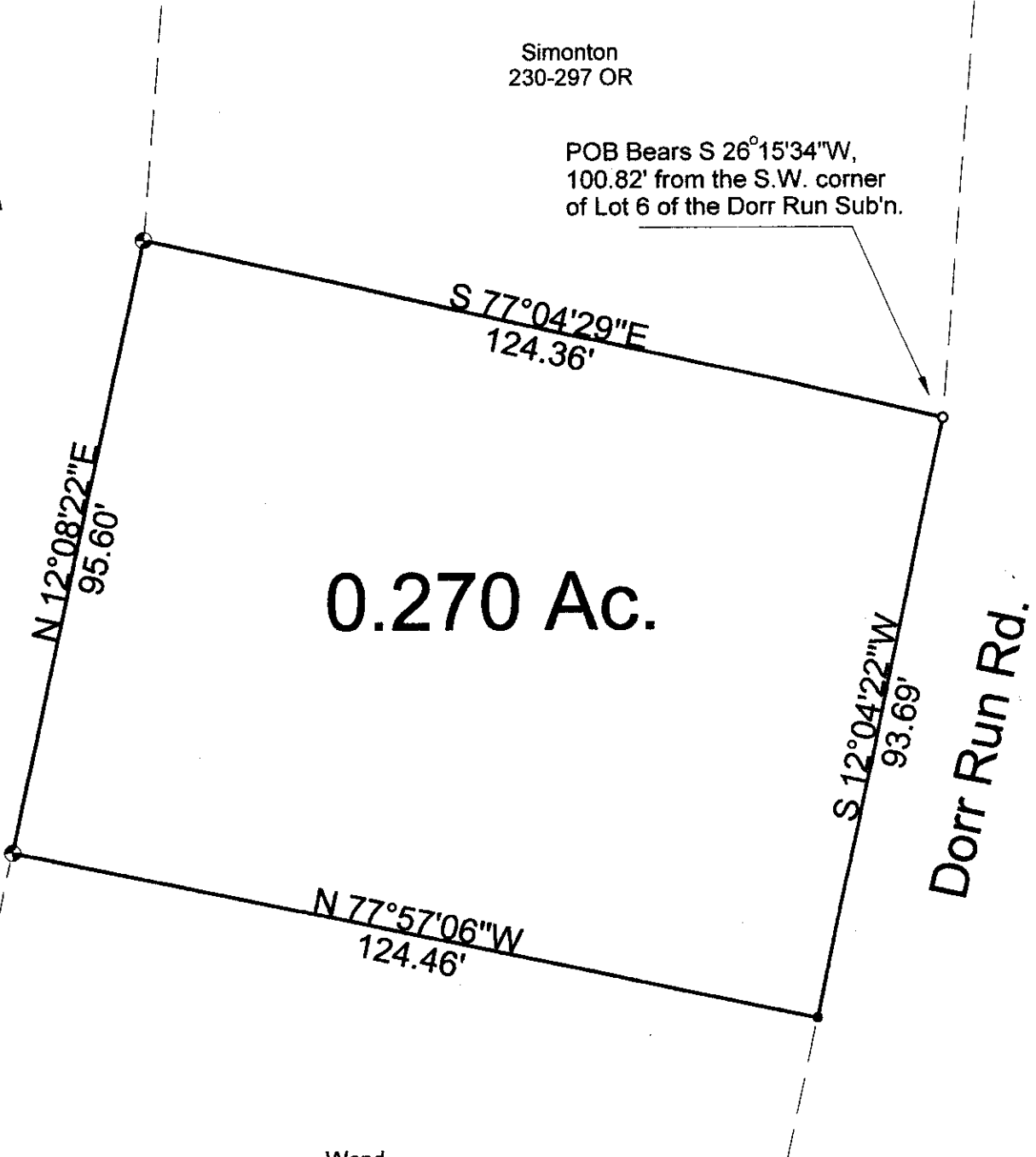




Simonton  
230-297 OR

POB Bears S 26°15'34"W,  
100.82' from the S.W. corner  
of Lot 6 of the Dorr Run Sub'n.

State of Ohio  
399-1807 OR

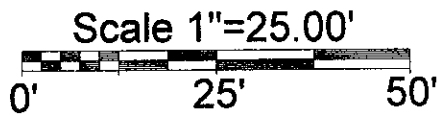


0.270 Ac.

Dorr Run Rd.

Wend  
197-735 OR

- = Iron Pin Set
- = Iron Pin Found
- ⊕ = ODOT Mon. Fd.



Description Checked for  
Mathematical Accuracy  
Athens County  
ENGINEER'S OFFICE  
BY: S. Blauer  
DATE: 1-7-08

PLAT OF SURVEY OF A 0.270 ACRE TRACT  
 SURVEYED FOR RON WEND  
 SUBDIVISION RIVER LOT 651  
 TOWNSHIP YORK SECTION 30 TOWN 12 RANGE 15  
 CORPORATION NELSONVILLE COUNTY ATHENS STATE OHIO  
 SCALE 1"= 25' DATE JAN, 2008



Kenneth E. Highland  
80 Fayette St.  
Nelsonville, Ohio 45764  
740-753-1264

Kenneth E. Highland S-7581