

**DESCRIPTION OF 2.59 ACRES
SECTIONS 32, TOWNSHIP 12, RANGE 15
YORK TOWNSHIP, ATHENS COUNTY**

Commencing at a railroad spike found at the intersection of east line of Section 32 and center of County Road No. 2, and being South 6 degrees 28 minutes 48 seconds West 935.55 feet of the northeast corner of Section 32, thence, South 70 degrees 16 minutes 25 seconds West a distance of 128.22 feet to an iron pin found; thence, North 84 degrees 03 minutes 47 seconds West a distance of 165.10 feet to an iron pin found, said iron pin being the true point of beginning; thence, North 04 degrees 09 minutes 12 seconds East, passing an iron pin set at 227.67 feet, a distance of 244.98 feet to a point in the center of Township Road No. 273; thence, along the center of said township road, North 80 degrees 50 minutes 44 seconds West a distance of 41.35 feet to a point; thence, North 88 degrees 29 minutes 37 seconds West a distance of 72.58 feet to a point; thence, South 88 degrees 49 minutes 16 seconds West a distance of 122.03 feet to a point; thence, South 80 degrees 32 minutes 33 seconds West a distance of 111.20 feet to a point; thence, North 88 degrees 00 minutes 55 seconds West a distance of 17.23 feet to a point; thence, leaving the center of said township road, South 63 degrees 01 minutes 57 seconds West, passing an iron pin set at 28.88 feet, a distance of 361.36 feet to an iron pin found; thence, South 84 degrees 06 minutes 37 seconds East a distance of 670.15 feet to the true point of beginning. Containing 2.59 acres.

Subject to all legal right-of-ways, easements and leases of record.

LAST DEED REFERENCE: Volume 127, page 629 of the Deed Records of Athens County in the Office of the Athens County Recorder.

All iron pins set in the above description are 5/8 inch diameter rebar with a 1-1/4 inch diameter plastic caps stamped "JOSEPH ROMAN RS-6461".

The bearings in the above description is based on assuming a bearing of South 06 degrees 28 minutes 48 seconds West for the east line of Section 32.

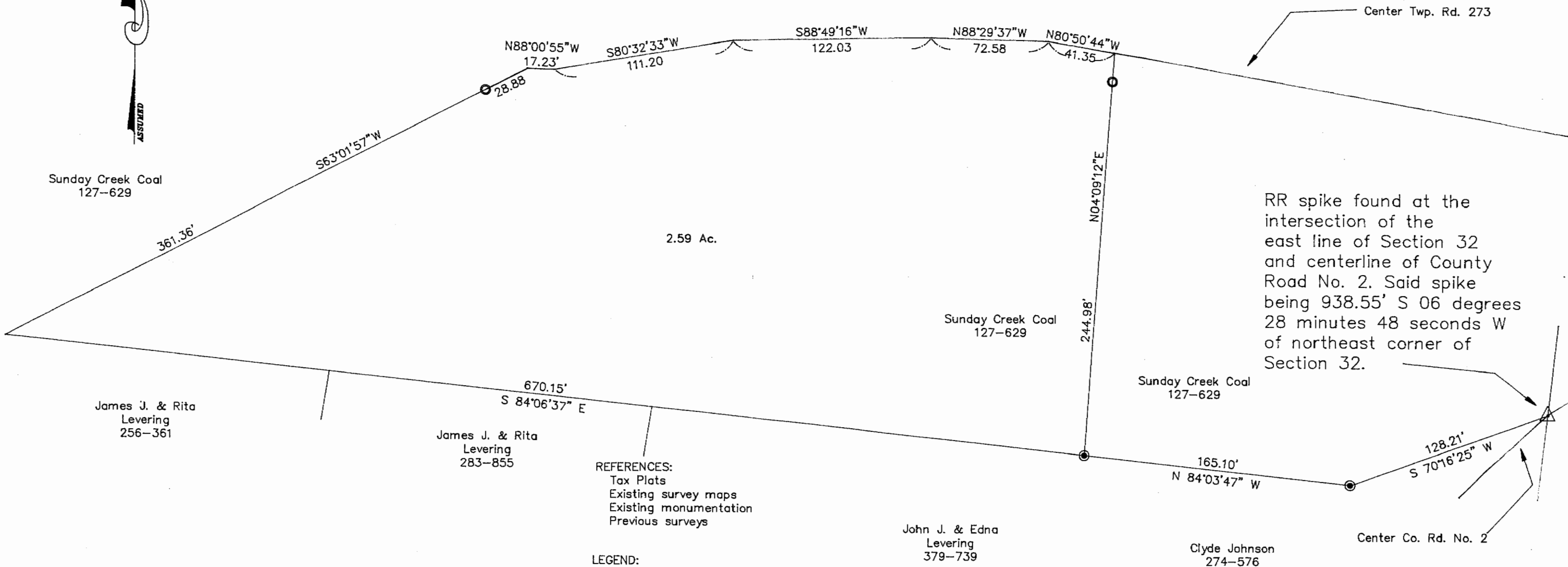
The above description was prepared from an actual survey of the premises made by Joseph C. Roman, Registered Surveyor No. S-6461, in May 2000.

Description checked for
mathematical Accuracy
ATHENS COUNTY
ENGINEER'S OFFICE
BY: S. Blausey
DATE: 7-27-00

000114

YRK # 32

PLAT OF 2.59 ACRE TRACT
SECTION 32, TOWNSHIP 12, RANGE 15
YORK TOWNSHIP, ATHENS COUNTY, OHIO



RR spike found at the intersection of the east line of Section 32 and centerline of County Road No. 2. Said spike being 938.55' S 06 degrees 28 minutes 48 seconds W of northeast corner of Section 32.

REFERENCES:
Tax Plats
Existing survey maps
Existing monumentation
Previous surveys

LEGEND:
 ○ 5/8" iron pin set 30" in length with 1-1/4" plastic ID cap stamped JOSEPH ROMAN RS-6461
 ● Iron pin found
 △ Railroad spike found

BEARING BASIS:
Assuming a bearing of S 06° 28' 48" W for the east line of Section 32.

Description checked for Mathematical Accuracy
ATHENS COUNTY ENGINEER'S OFFICE
BY: *S. Blausen*
DATE: *7-27-00*

I hereby certify this plat was prepared from an actual survey of the premises made by me in May 2000.

Joseph C. Roman
JOSEPH C. ROMAN, RS-6461
68 WEST COLUMBUS STREET
NELSONVILLE, OHIO 45764
PHONE # 740-753-2697

GRAPHIC SCALE



(IN FEET)
1 inch = 60 ft.

000116

000117

SECTION 32
SECTION 26