



C. Tim Newman
Registered Professional Surveyor

66 Elmwood Place
Athens, Ohio 45701

740-594-1884
Fax 740-594-9413



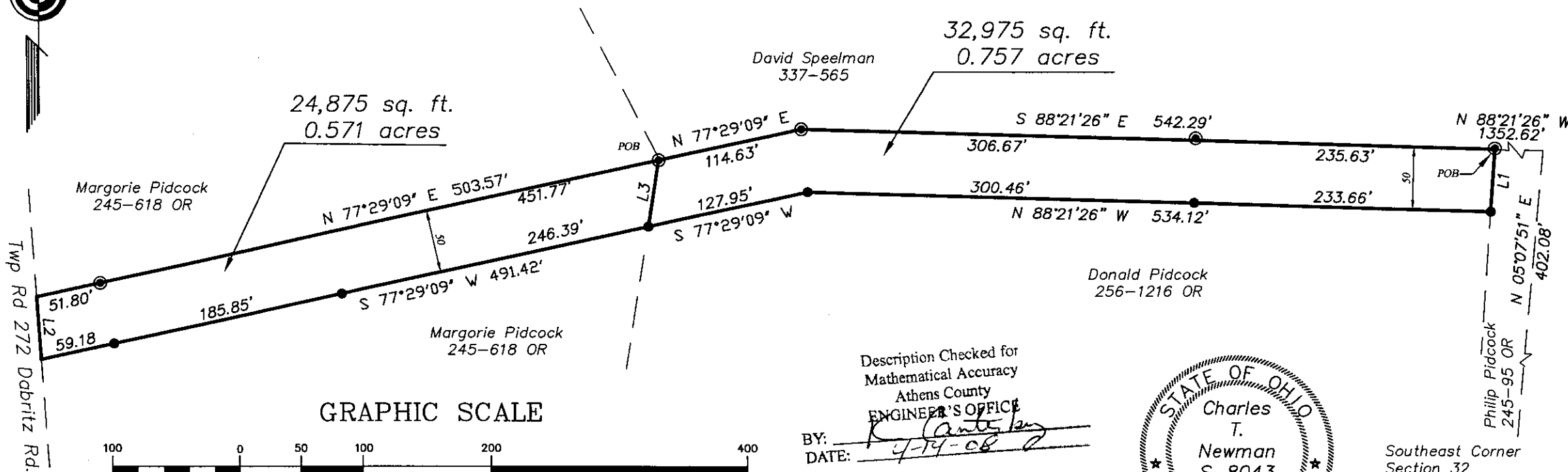
Prior Survey

LINE TABLE		
LINE	LENGTH	BEARING
L1	50.04	S03°53'14"W
L2	50.54	N04°07'00"W
L3	53.68	S08°49'32"W

LEGEND	
●	IRON PIN FOUND
●	IRON PIN SET

Plat of Survey of two tracts being 0.571 Acres and 0.757 Acres
Situating in Section 32, Town 12, Range 15, York Township, Athens County, Ohio
Surveyed February 22, 2007 for: Marjorie Pidcock and Donald Pidcock

Charles T. Newman
Charles T. Newman



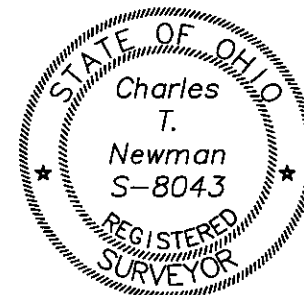
GRAPHIC SCALE



(IN FEET)
1 inch = 100 ft.

Description Checked for
Mathematical Accuracy
Athens County
ENGINEER'S OFFICE

BY: *[Signature]*
DATE: *4-14-08*



Southeast Corner
Section 32