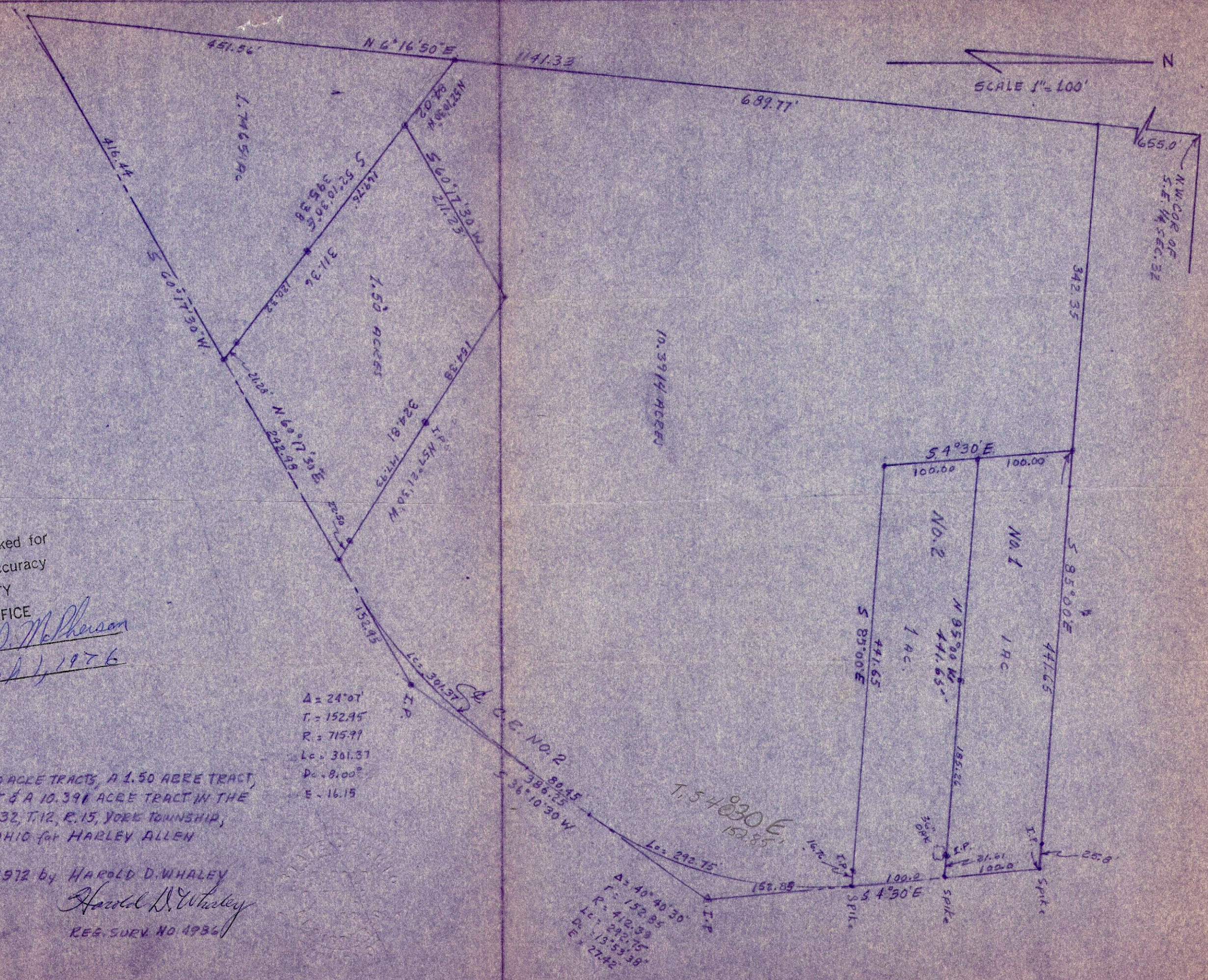
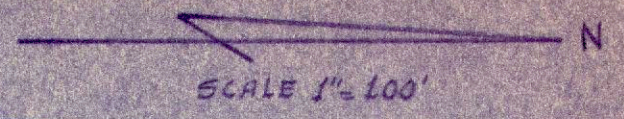


$\Delta = 24^{\circ}07'$
 $T = 152.95'$
 $R = 115.91'$
 $Lc = 301.37'$
 $Dc = 8.00^{\circ}$
 $E = 16.15'$

SURVEY OF TWO 1.00 ACRE TRACTS, A 1.50 ACRE TRACT,
 A 1.742 ACRE TRACT & A 10.396 ACRE TRACT IN THE
 S.E. QUARTER, SEC. 32, T. 12, R. 15, YORK TOWNSHIP,
 ATHENS COUNTY, OHIO for HARLEY ALLEN

SURVEYED MAY 1972 by HAROLD D. WHALEY
Harold D. Whaley
 REG. SURV. NO. 4936



Description checked for
 Mathematical Accuracy
 ATHENS COUNTY
 ENGINEER'S OFFICE
 BY: Brian D. McPherson
 DATE: March 1, 1976

SURVEY OF TWO 1.00 ACRE TRACTS, A 1.50 ACRE TRACT,
 A 1.746 ACRE TRACT & A 10.391 ACRE TRACT IN THE
 S.E. QUARTER, SEC. 32, T. 12, R. 15, YORK TOWNSHIP,
 ATHENS COUNTY, OHIO for HARLEY ALLEN

SURVEYED MAY 1972 by HAROLD D. WHALEY
 Corrected 9/9/75
Harold D. Whaley
 REG. SURV. NO. 4936

$\Delta = 24.07'$
 $T = 152.95'$
 $R = 715.99'$
 $Lc = 301.37'$
 $Dc = 8.00''$
 $E = 16.15'$

$\Delta = 40' 40' 30''$
 $T = 152.85'$
 $R = 412.39'$
 $Lc = 292.75'$
 $Dc = 13' 53' 38''$
 $E = 27.42'$