

SURVEY DESCRIPTION OF A 80.025 ACRE TRACT FOR LARRY AND JULIE TAYLOR

Situated in York Township, Athens County, Ohio; being part of Fractional Lots 31 and 32 of Section 33, Township 12, Range 15; and being more particularly described as follows:

Commencing for reference at a wood fence post found at a point taken to be the Southwest corner of Section 33; thence with the South line of Section 33 South 89 degrees 12 minutes 09 seconds East a distance of 996.93 feet to a 5/8" iron pin previously set in the center of a private road and being the point of **Beginning** of the tract of land to be described;

thence leaving the South line of Section 33 and with the center of a private road the following fifteen bearings and distances:

- 1) North 1 degree 20 minutes 22 seconds West a distance of 192.53 feet to a 5/8" iron pin previously set;
- 2) North 7 degrees 46 minutes 19 seconds West a distance of 93.99 feet to a 5/8" iron pin previously set;
- 3) North 3 degrees 44 minutes 09 seconds West a distance of 138.59 feet to a 5/8" iron pin previously set;
- 4) North 6 degrees 00 minutes 57 seconds West a distance of 96.62 feet to a 5/8" iron pin previously set;
- 5) North 16 degrees 39 minutes 50 seconds West a distance of 49.70 feet to a 5/8" iron pin previously set;
- 6) North 5 degrees 28 minutes 11 seconds West a distance of 275.66 feet to a 5/8" iron pin previously set;
- 7) North 2 degrees 44 minutes 48 seconds West a distance of 232.09 feet to a 5/8" iron pin previously set;
- 8) North 1 degree 16 minutes 14 seconds East a distance of 137.26 feet to a 5/8" iron pin previously set;
- 9) North 3 degrees 06 minutes 53 seconds East a distance of 220.58 feet to a 5/8" iron pin previously set;
- 10) North 9 degrees 41 minutes 46 seconds East a distance of 103.89 feet to a 5/8" iron pin previously set;
- 11) North 11 degrees 49 minutes 49 seconds West a distance of 58.15 feet to a 5/8" iron pin previously set;
- 12) North 22 degrees 26 minutes 13 seconds West a distance of 262.52 feet to a 5/8" iron pin previously set;
- 13) North 25 degrees 34 minutes 39 seconds West a distance of 241.42 feet to a 5/8" iron pin previously set;
- 14) North 25 degrees 50 minutes 04 seconds West a distance of 119.77 feet to a 5/8" iron pin previously set;
- 15) North 20 degrees 59 minutes 28 seconds West a distance of 130.48 feet to a 5/8" iron pin previously set, passing a 5/8" iron pin previously set at a distance of 36.48 feet, and passing the end of Township Road 274 at a distance of 110.48 feet;

thence with the center of Township Road 274 North 25 degrees 40 minutes 44 seconds West a distance of 30.00 feet to a 5/8" iron pin set;

thence leaving the center of Township Road 274 North 64 degrees 19 minutes 16 seconds East a distance of 50.00 feet to a 5/8" iron pin set;

- thence South 25 degrees 40 minutes 44 seconds East a distance of 32.05 feet to a 5/8" iron pin set;
- thence South 20 degrees 59 minutes 28 seconds East a distance of 130.41 feet to a point;
- thence South 25 degrees 50 minutes 04 seconds East a distance of 117.77 feet to a 5/8" iron pin set;
- thence South 25 degrees 34 minutes 39 seconds East a distance of 242.90 feet to a 5/8" iron pin set;
- thence South 22 degrees 26 minutes 13 seconds East a distance of 222.30 feet to a 5/8" iron pin set;
- thence North 83 degrees 08 minutes 33 seconds East a distance of 329.72 feet to a 5/8" iron pin set;
- thence South 44 degrees 39 minutes 07 seconds East a distance of 308.24 feet to a 5/8" iron pin set;
- thence South 83 degrees 24 minutes 32 seconds East a distance of 771.77 feet to a 5/8" iron pin set;
- thence South 58 degrees 34 minutes 05 seconds East a distance of 1769.35 feet to a 5/8" iron pin set and passing a 5/8" iron pin set at a distance of 228.03 feet;

thence South 0 degrees 12 minutes 09 seconds East a distance of 495.74 feet to a 5/8" iron pin previously set on the South line of Section 33;

thence with the South line of Section 33 North 89 degrees 12 minutes 09 seconds West a distance of 2785.34 feet to the point of beginning, containing 80.025 acres more or less, and subject to any public or private easements of record.

The above 80.025 acre survey is intended to describe part of the 216.00 acre tract as deeded to Larry W. and Julie A. Taylor, deed reference Volume OR256, Page 1269, Athens County Recorder's Office. This survey was based upon information obtained from tax maps, deed descriptions, previous surveys, existing monumentation, and existing fence lines. The reference bearing for this survey is the West line of the South half of Section 33 as North 0 degrees 00 minutes 00 seconds West. Bearings are based upon an assumed meridian and are to denote angles only. All iron pins set by this survey or previously set are 5/8" by 30" (15" in roadway) and are capped by a 1-1/4" plastic identification cap stamped LPG-6344. The above described property was surveyed by Larry P. Gerstner, Ohio Registered Surveyor No. 6344, on September 27, 1999.



Description checked for
Mathematical Accuracy
ATHENS COUNTY
ENGINEER'S OFFICE
BY: L. Gerstner
DATE: 10/1/99

Larry P. Gerstner

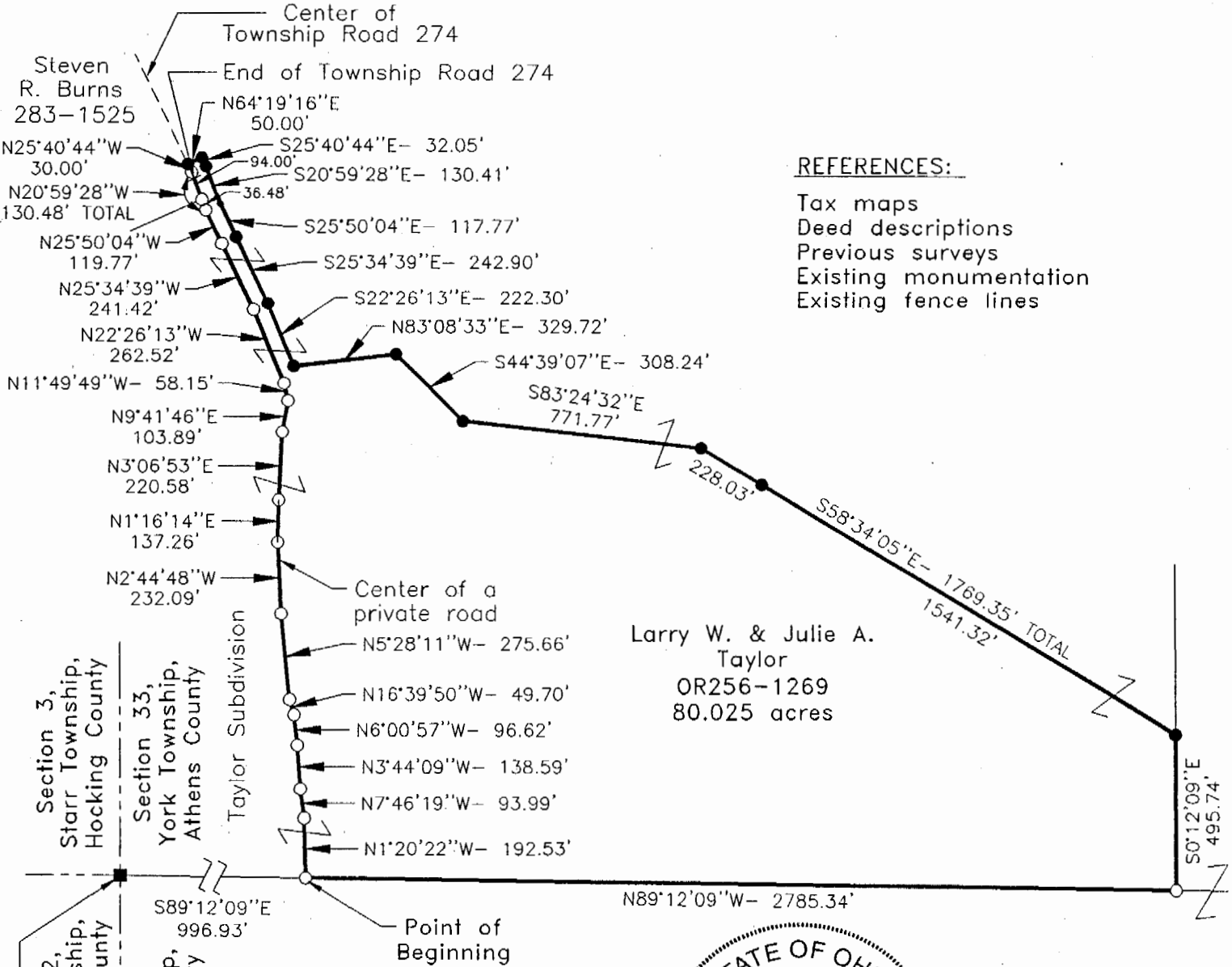
Survey by:
Larry P. Gerstner - Engineering and Surveying
9 East Second Street, Suite A, Logan, Ohio 43138 385-4260

Vol # 33

8

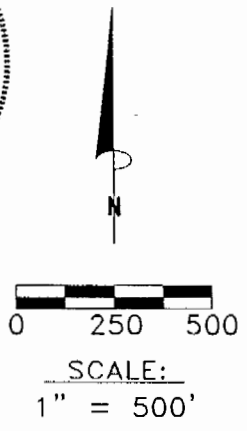
PLAT OF AN 80.025 ACRE TRACT FOR LARRY AND JULIE TAYLOR

Situated in York Township, Athens County, Ohio; being part of Fractional Lots 31 and 32 of Section 33, Township 12, Range 15.



REFERENCES:
 Tax maps
 Deed descriptions
 Previous surveys
 Existing monumentation
 Existing fence lines

Larry W. & Julie A. Taylor
 OR256-1269
 80.025 acres



LEGEND

- Point
- 5/8" x 30" (15" in roadway) iron pin with 1-1/4" plastic ID cap stamped LPG-6344 previously set
- 5/8" x 30" iron pin with 1-1/4" plastic ID cap stamped LPG-6344 set
- Wood fence post found

Description checked for
 Mathematical Accuracy
 ATHENS COUNTY
 ENGINEER'S OFFICE
 BY: *K. [Signature]*
 DATE: *10/1/99*

REFERENCE BEARING:

The West line of the South half of Section 33 as North 0 degrees 00 minutes 00 seconds West. Bearings are based upon an assumed meridian and are to denote angles only.

CERTIFICATION:

I hereby certify that an actual survey was made under my supervision of the premises shown hereon on the 27th day of September, 1999 and that the plat is a correct representation of the premises as described by said survey.

Larry P. Gerstner
 Registered Surveyor No. 6344

Survey by: Larry P. Gerstner - Engineering and Surveying
 9 East Second Street, Suite A, Logan, Ohio 43138
 (740) 385-4260