

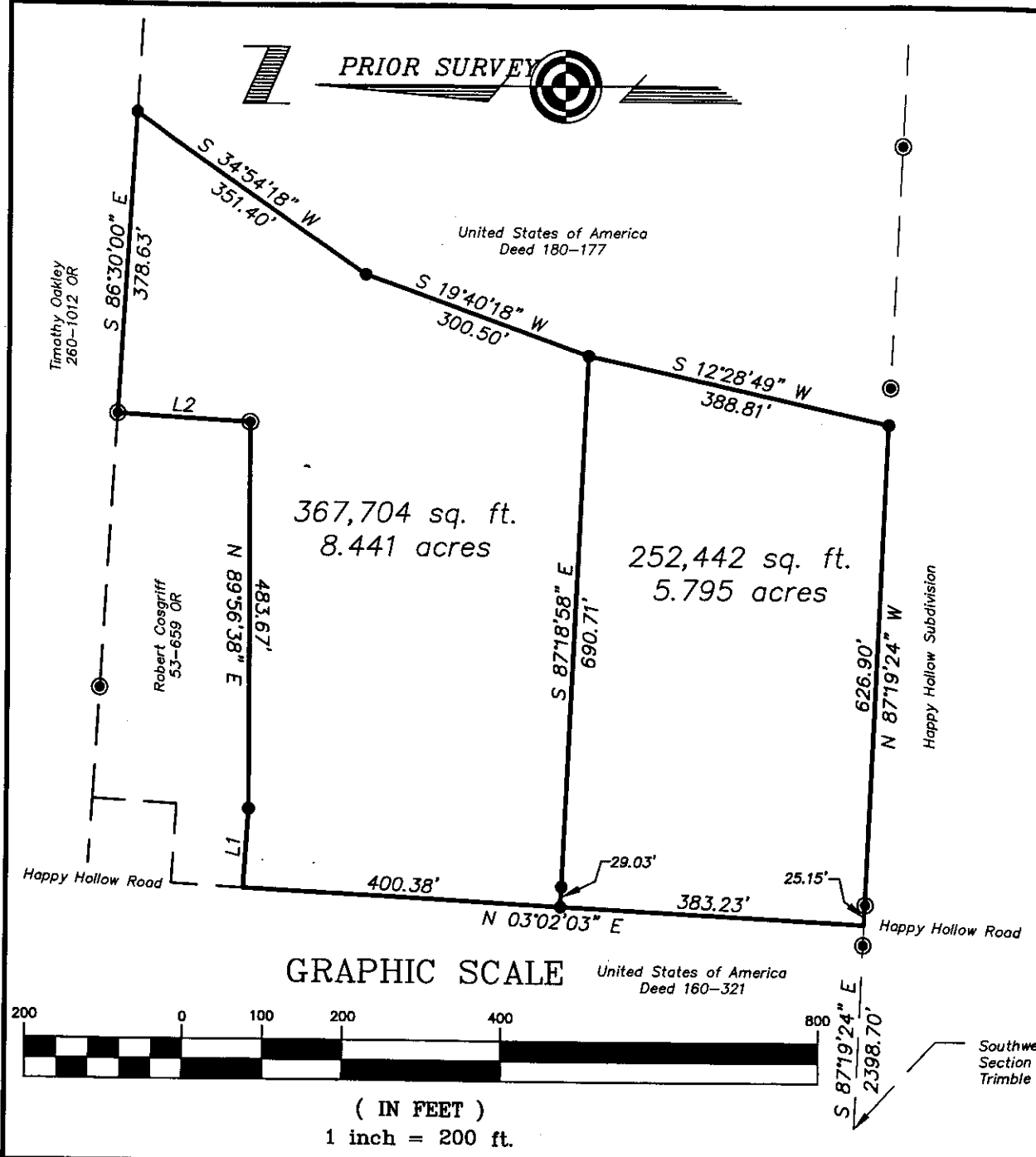


Plat of Survey of Two Tracts
 Situated in Section 6, Town 12, Range 15,
 York Township, Athens County, Ohio
 Surveyed August 2005 for:
 Joyce Boudinot

Charles T. Newman
Charles T. Newman

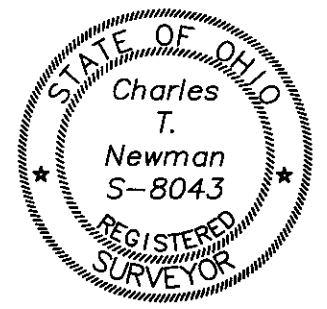
Description Checked for
 Mathematical Accuracy
 Athens County
 ENGINEER'S OFFICE

BY: *S. Phares*
 DATE: 8-15-05



LINE TABLE		
LINE	LENGTH	BEARING
L1	100.06	S86°30'14"E
L2	168.00	S03°15'04"W

⊙ = Iron Pin Found
 ● = Iron Pin Set



Member of Professional Land Surveyors of Ohio Land Surveys, Subdivisions

C. TIM NEWMAN
 Professional Surveyor

66 Elmwood Place Athens, Ohio 45701 740-594-1884
 FAX 740-594-9413