

DESCRIPTION OF FOREST ROAD AND TRAIL ACT EASEMENT

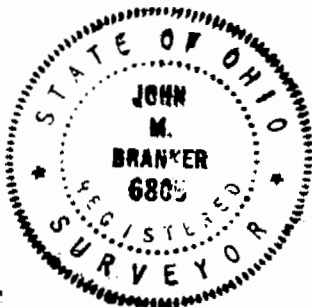
Situated in Section 8, T.10, R.15, York Township, Athens County, Ohio and being more particularly described as follows:

Commencing at the most Southerly most corner of a 137.71 acre in the name of Athens County, Ohio and recorded in Volume 290, Page 315, Athens County Deed Records, said point bears South 3055 feet and East, 3270 feet from the North-west corner of Section 8, thence, along a random line South 34 Degrees 04 Minutes 27 Seconds West, 211.08 feet to a railroad spike set in State Route 691, said spike being the point of beginning for the easement herein described:

thence, leaving State Route 691, North 82 degrees 55 minutes 55 seconds East, a distance of 150.21 feet;
thence South 59 degrees 52 minutes 46 seconds East, a distance of 142.86 feet;
thence South 73 degrees 10 minutes 46 seconds East, a distance of 249.76 feet;
thence North 66 degrees 13 minutes 15 seconds East, a distance of 254.79 feet to a point in County Road 4, where a railroad spike set bears North 44 Degrees 08 Minutes 32 Seconds East, 31.04 feet;
thence, along County Road 4, South 44 degrees 08 minutes 32 seconds West, a distance of 79.81 feet to a railroad spike set;
thence South 40 degrees 02 minutes 45 seconds West, a distance of 68.01 feet;
thence, leaving County Road 4, South 66 degrees 13 minutes 15 seconds West, a distance of 141.99 feet;
thence North 73 degrees 10 minutes 46 seconds West, a distance of 278.95 feet;
thence North 59 degrees 52 minutes 46 seconds West, a distance of 127.14 feet;
thence South 68 degrees 29 minutes 53 seconds West, a distance of 61.13 feet to a railroad spike set in State Route 691;
thence, along State Route 691, North 50 degrees 33 minutes 45 seconds West, a distance of 105.83 feet to the POINT OF BEGINNING; said described easement containing 0.99 acre.

The above description is based on a field survey completed June 1996 by John M. Branner P.S. 6805

John M. Branner



Description checked for
Mathematical Accuracy
ATHENS COUNTY
ENGINEER'S OFFICE
BY: S. Blausen
DATE: 12-2-97

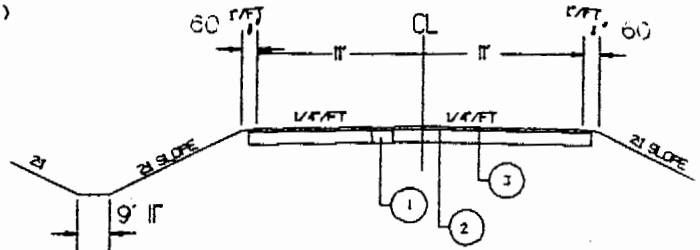
18
72R#8

Exhibit B

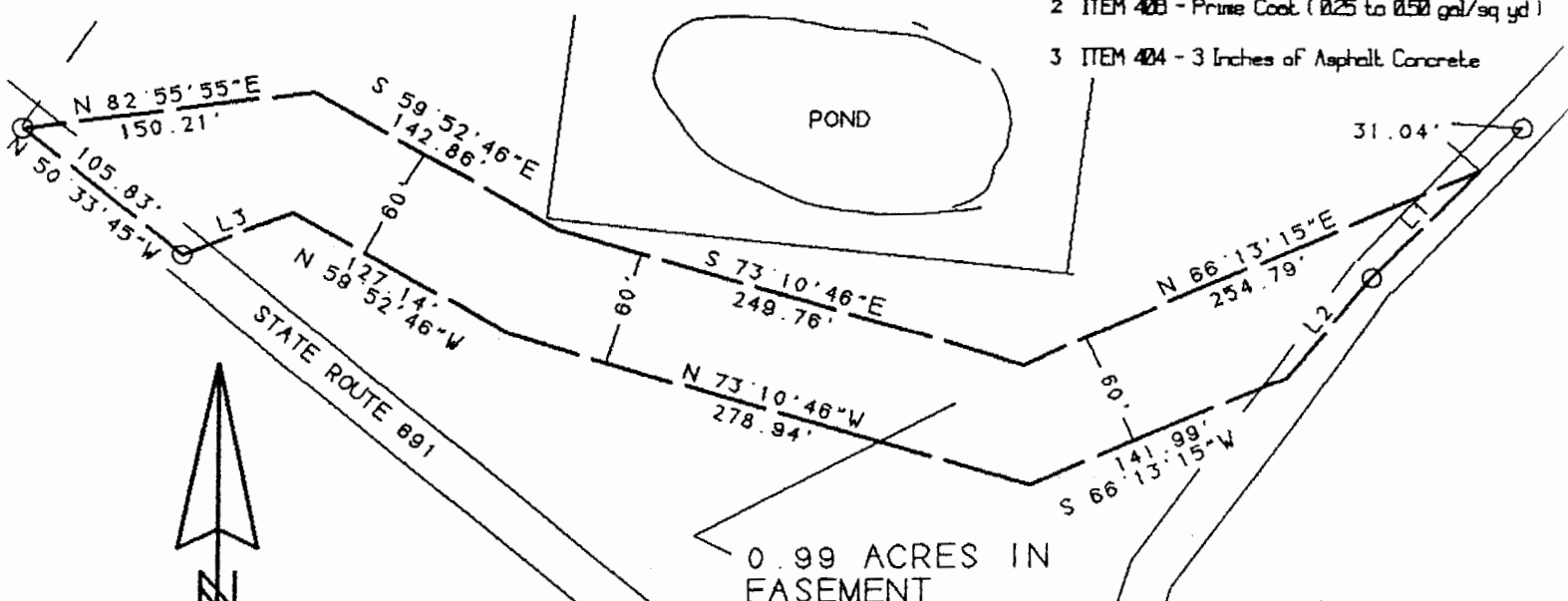
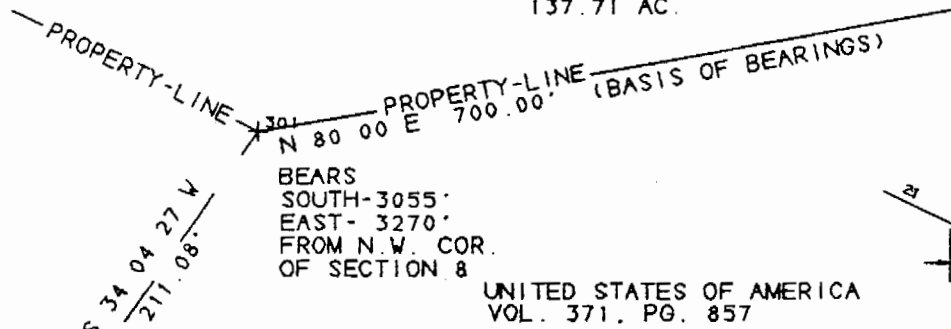
PLAT OF SURVEY
FOREST ROAD AND TRAIL ACT EASEMENT
FROM: U.S.D.A. FOREST SERVICE
TO: ATHENS COUNTY, OHIO

ATHENS COUNTY
 VOL. 290, PG. 315
 137.71 AC.

TYPICAL SECTION



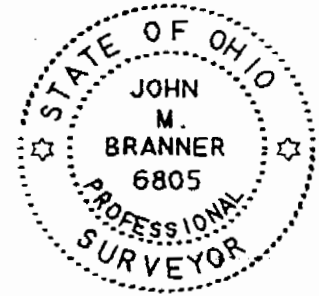
- 1 ITEM 304 - 6 inches of Aggregate Base
- 2 ITEM 408 - Prime Coat (0.25 to 0.50 gal/sq yd)
- 3 ITEM 404 - 3 inches of Asphalt Concrete



SCALE 1 INCH = 100 FEET
 ○ = RAILROAD SPIKE SET
 ——— = EASEMENT LINE
 BEARINGS BASED ON A NOV. '92
 SURVEY BY ENGINEERING ASSOC.

LINE	BEARING	DISTANCE
L 1	S 44° 08' 32" W	79.81'
L 2	S 40° 02' 45" W	68.01'
L 3	S 68° 29' 53" W	61.13'

Description checked for
 Mathematical Accuracy
 ATHENS COUNTY
 ENGINEER'S OFFICE
 BY: *S. Blawie*
 DATE: *12-2-97*



PREPARED BY: ATHENS COUNTY ENGINEERS DEPT.
 JOHN M. BRANNER P.S. 6805

19