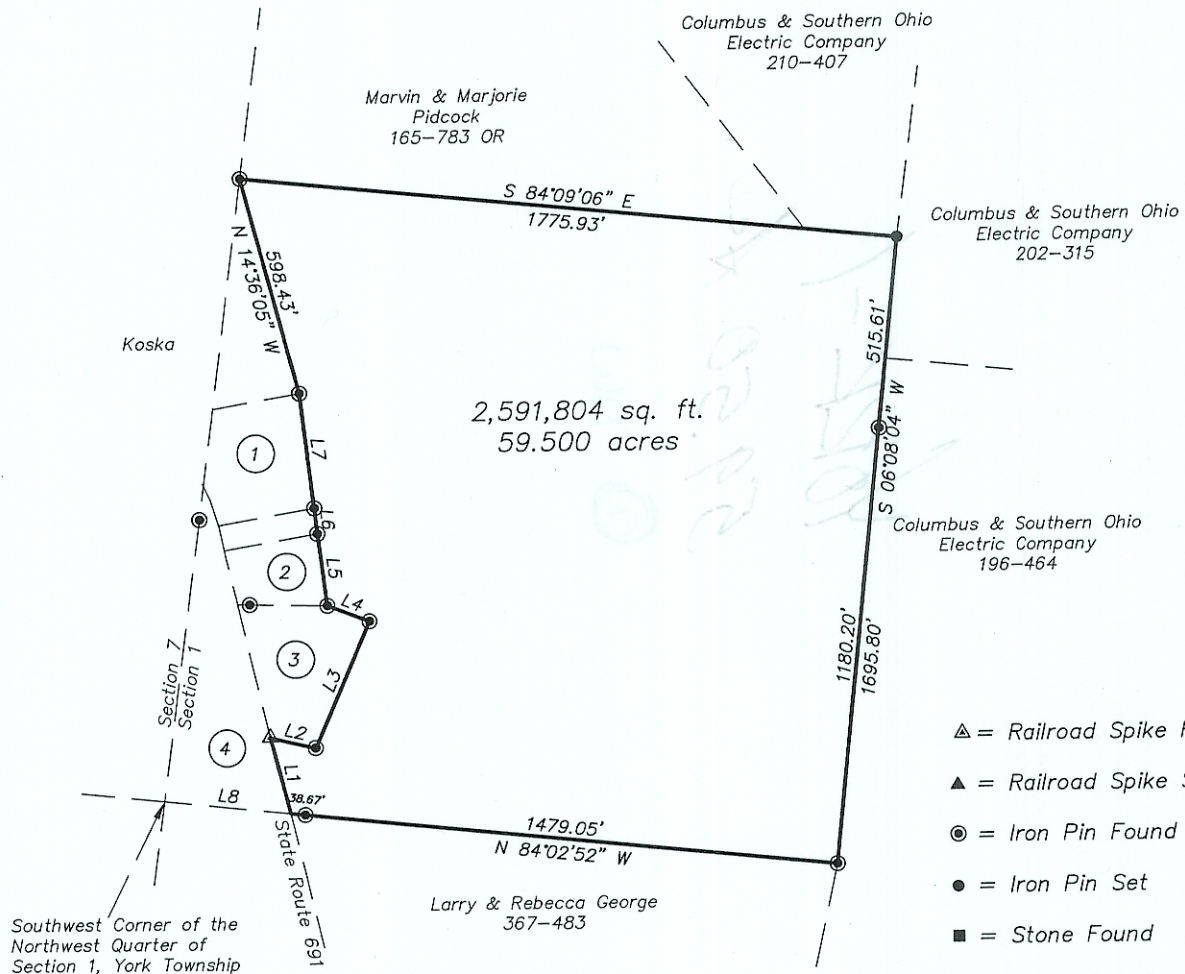
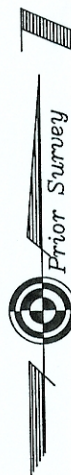


Plat of Survey of 59.500 Acres
 Situated in Section 1, Town 12, Range 15,
 York Township, Athens County, Ohio
 Surveyed June 2005 for:
 Homer Mourn Sr.

Charles T. Newman
 Charles T. Newman



- △ = Railroad Spike Found
- ▲ = Railroad Spike Set
- ⊙ = Iron Pin Found
- = Iron Pin Set
- = Stone Found
- ⊕ = Monument Found

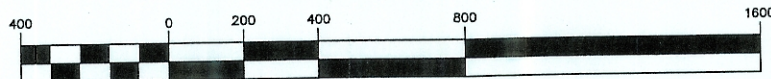
- ① Ronald Mash 234-691 OR
- ② John Mourn
- ③ Homer Mourn
- ④ Timothy Dresher 245-382 OR



Description Checked for
 Mathematical Accuracy
 Athens County
 ENGINEER'S OFFICE

BY: *C. Newman*
 DATE: *6-6-05*

GRAPHIC SCALE



(IN FEET)
 1 inch = 400 ft.

LINE	LENGTH	BEARING
L1	211.62	N14°17'43"W
L2	124.13	S76°40'08"E
L3	372.64	N23°29'25"E
L4	120.74	N69°03'36"W
L5	196.23	N07°06'50"W
L6	69.62	N06°06'38"W
L7	311.37	N06°39'36"W
L8	342.87	S84°02'52"E

Member of Professional Land Surveyors of Ohio Land Surveys, Subdivisions



C. TIM NEWMAN
 Professional Surveyor

66 Elmwood Place
 Athens, Ohio 45701

740-594-1884
 FAX 740-594-9413