



C. TIM NEWMAN

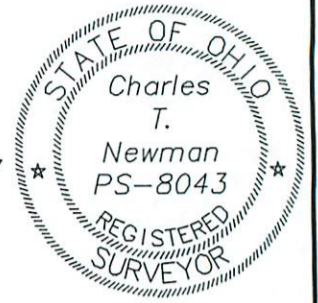
Professional Surveyor

66 Elmwood Place  
Athens, Ohio 45701

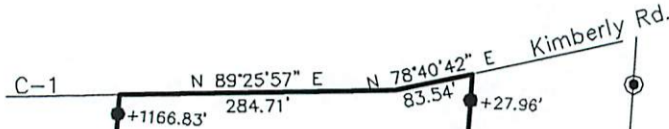
740-594-1884  
FAX 740-594-9413

Plat of Survey of 9.95 Acres  
Situate Ohio Company Purchase Town 12, Range 15, Fraction 19, Fraction 25,  
Section 20, York Township, Athens County, Ohio.  
Being all of the lands deeded to Patricia Cain,  
Official Record Book 516, pages 928-929.

*Charles T. Newman*  
Charles T. Newman  
Surveyed September 8, 2017



Description Checked for  
Mathematical Accuracy  
Athens County  
ENGINEER'S OFFICE  
BY: *Aug. E. SW*  
DATE: 9/8/17



Bullock  
342-1068

9.950 ACRES

(First Tract)

Cagg  
420-2113

- Iron Pin Found capped Seymour
- Iron Pin Set
- Stone Found

Fraction 25  
Fraction 19

(5.83 acres)  
(4.12 acres)

Fraction 25  
Fraction 19

Zimmerman  
408-1914

(Second Tract)

Fence

Breeze 459-659

N 04°21'49" E  
1726.40'  
(Calculated)

(Not to Scale)

N 86°06'25" W  
3188.30'  
(Calculated)  
SE Corner  
Fraction 19

GRAPHIC SCALE



( IN FEET )  
1 inch = 200 ft.