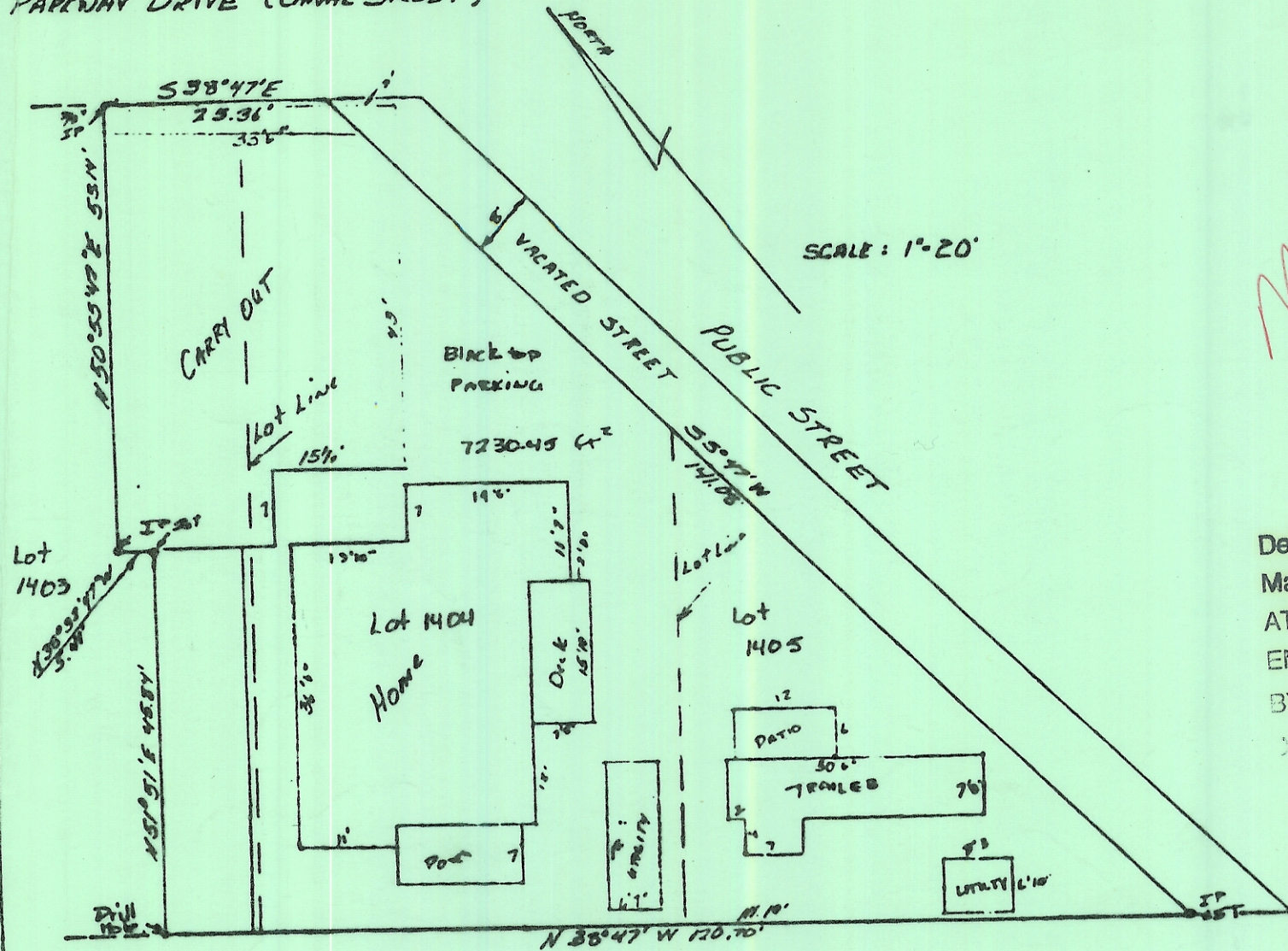


PARKWAY DRIVE (CANAL STREET)



SCALE: 1"=20'

M-18  
 24  
 NELSONVILLE  
 (GW)  
 Nelsonville  
 0.166 Ac

Description checked for  
 Mathematical Accuracy  
 ATHENS COUNTY  
 ENGINEER'S OFFICE  
 BY: *Charles [unclear]*

DATE: 12-3-82

JACKSON STREET

SURVEY OF:  
 LOT 1405, 1404, AND PART OF 1403  
 IN PATTON AND JACKSON'S ADDITION  
 TO NELSONVILLE, OHIO

SURVEYED AUG 9, 1982  
 BY GREGORY K. WEIGHT  
 REGISTERED SURVEYOR  
 5-6535

REVISED 9-15-82

*Gregory K. Weight*