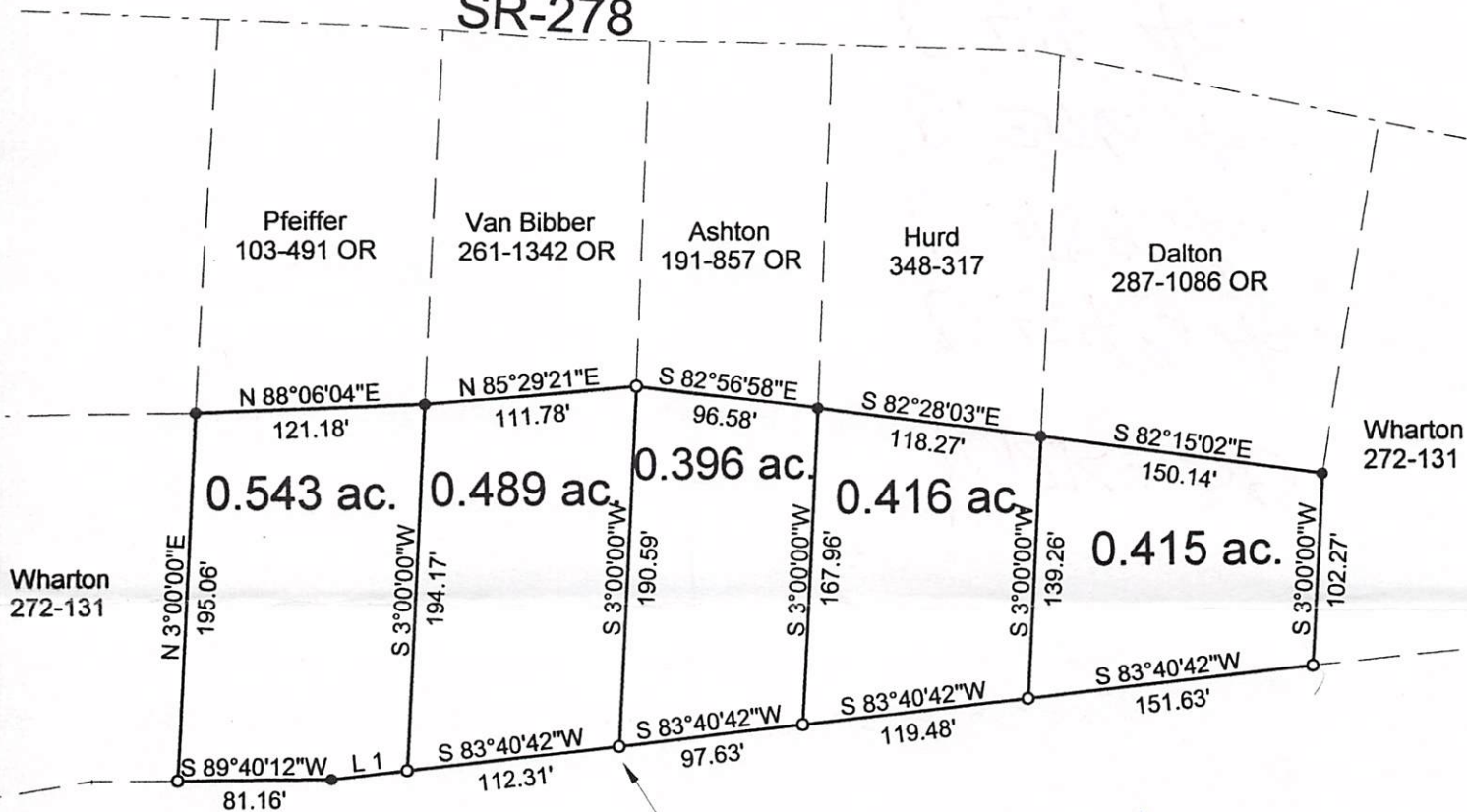




SR-278



POB/POC- Bears N 75 10'49"W,
2757.92 feet from the S.E. corner
of Section 30 (calc. from deed)

U.S.A.
322-279

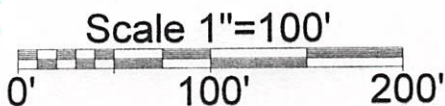
Line	Bearing	Distance
1	S 83°40'42"W	40.24'

NOTE: The 5 tracts shown
here are all transfers between
adjoining owners.

- = Iron Pin Set
- = Iron Pin Found

Description Checked for
Mathematical Accuracy
Athens County
ENGINEER'S OFFICE

BY: J. Blausy
DATE: 10-18-06



PLAT OF SURVEY OF 5 TRACTS

SURVEYED FOR DALE WHARTON

SUBDIVISION —

TOWNSHIP YORK SECTION 30 TOWN 12 RANGE 15

CORPORATION NELSONVILLE COUNTY ATHENS STATE OHIO

SCALE 1" = 100' DATE OCT. 2006

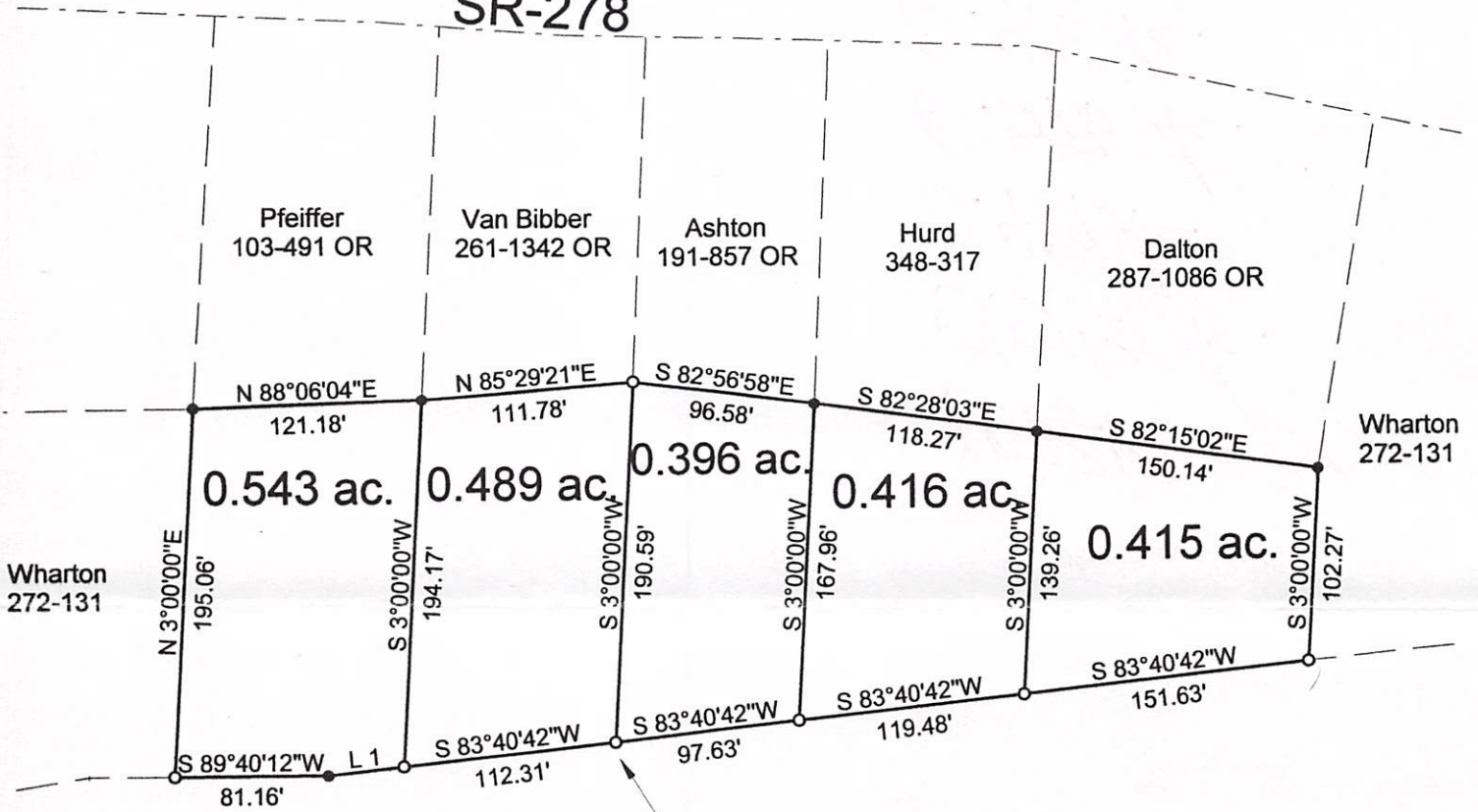
Kenneth E. Highland
80 Fayette St.
Nelsonville, Ohio 45764
740-753-1264

Kenneth E. Highland S-7581





SR-278



POB/POC- Bears N 75 10'49\"W,
2757.92 feet from the S.E. corner
of Section 30 (calc. from deed)

U.S.A.
322-279

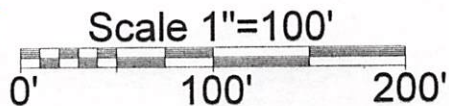
Line 1 Bearing S 83°40'42\"W Distance 40.24'

Description Checked for
Mathematical Accuracy
Athens County
ENGINEER'S OFFICE

BY: S. Blausch
DATE: 10-18-06

○ = Iron Pin Set
● = Iron Pin Found

NOTE: The 5 tracts shown
here are all transfers between
adjoining owners.



PLAT OF SURVEY OF 5 TRACTS

SURVEYED FOR DALE WHARTON

SUBDIVISION —

TOWNSHIP YORK SECTION 30 TOWN 12 RANGE 15

CORPORATION NELSONVILLE COUNTY ATHENS STATE OHIO

SCALE 1" = 100' DATE OCT. 2006

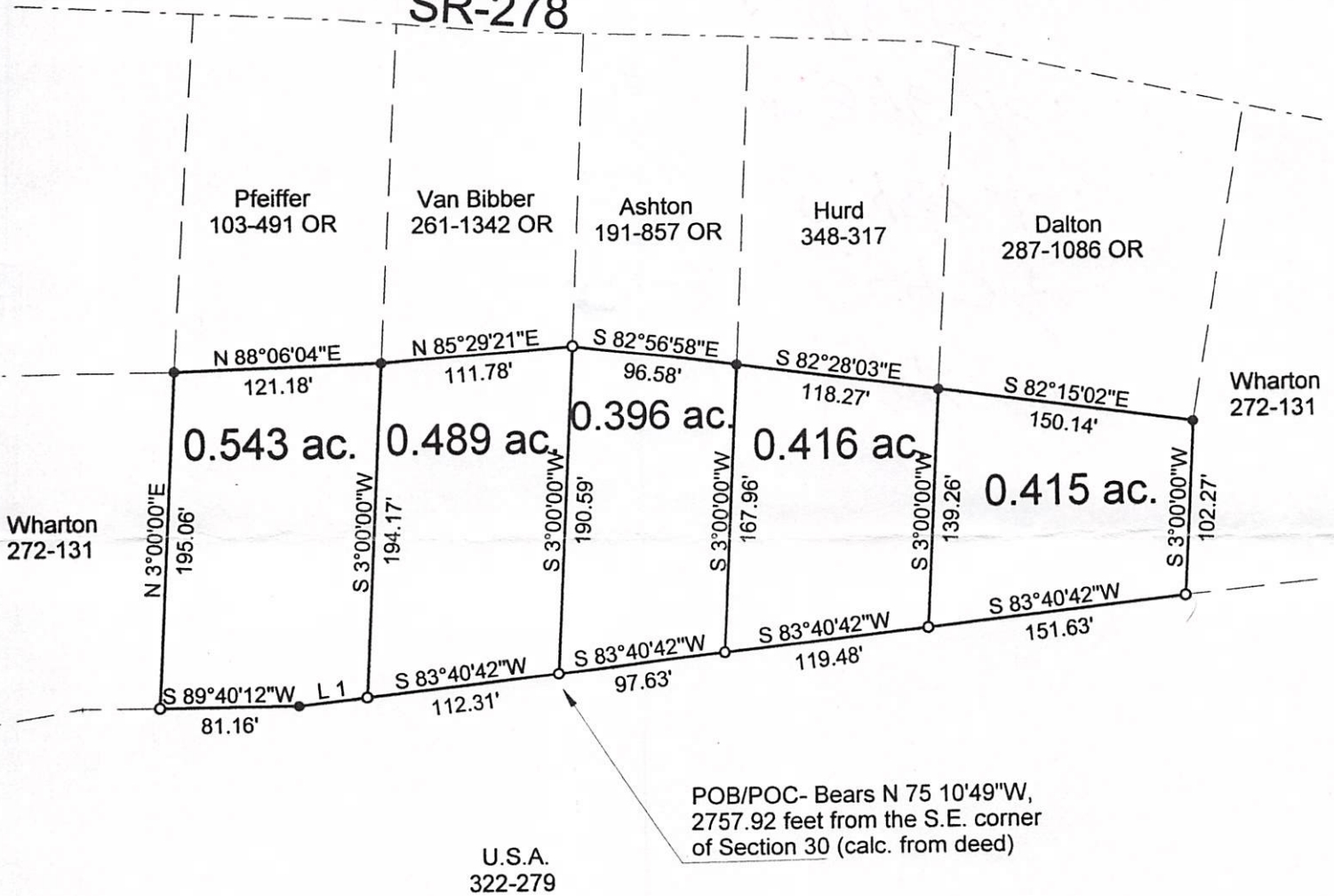
Kenneth E. Highland
80 Fayette St.
Nelsonville, Ohio 45764
740-753-1264

Kenneth E. Highland S-7581





SR-278

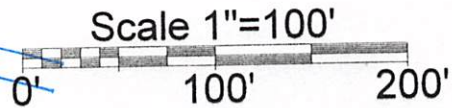


Line	Bearing	Distance
1	S 83°40'42\"W	40.24'

- = Iron Pin Set
- = Iron Pin Found

NOTE: The 5 tracts shown here are all transfers between adjoining owners.

Description Checked for
Mathematical Accuracy
Athens County
ENGINEER'S OFFICE
BY: *S. Blausig*
DATE: *10-18-06*



PLAT OF SURVEY OF 5 TRACTS

SURVEYED FOR DALE WHARTON

SUBDIVISION —

TOWNSHIP YORK SECTION 30 TOWN 12 RANGE 15

CORPORATION NELSONVILLE COUNTY ATHENS STATE OHIO

SCALE 1" = 100' DATE OCT. 2006

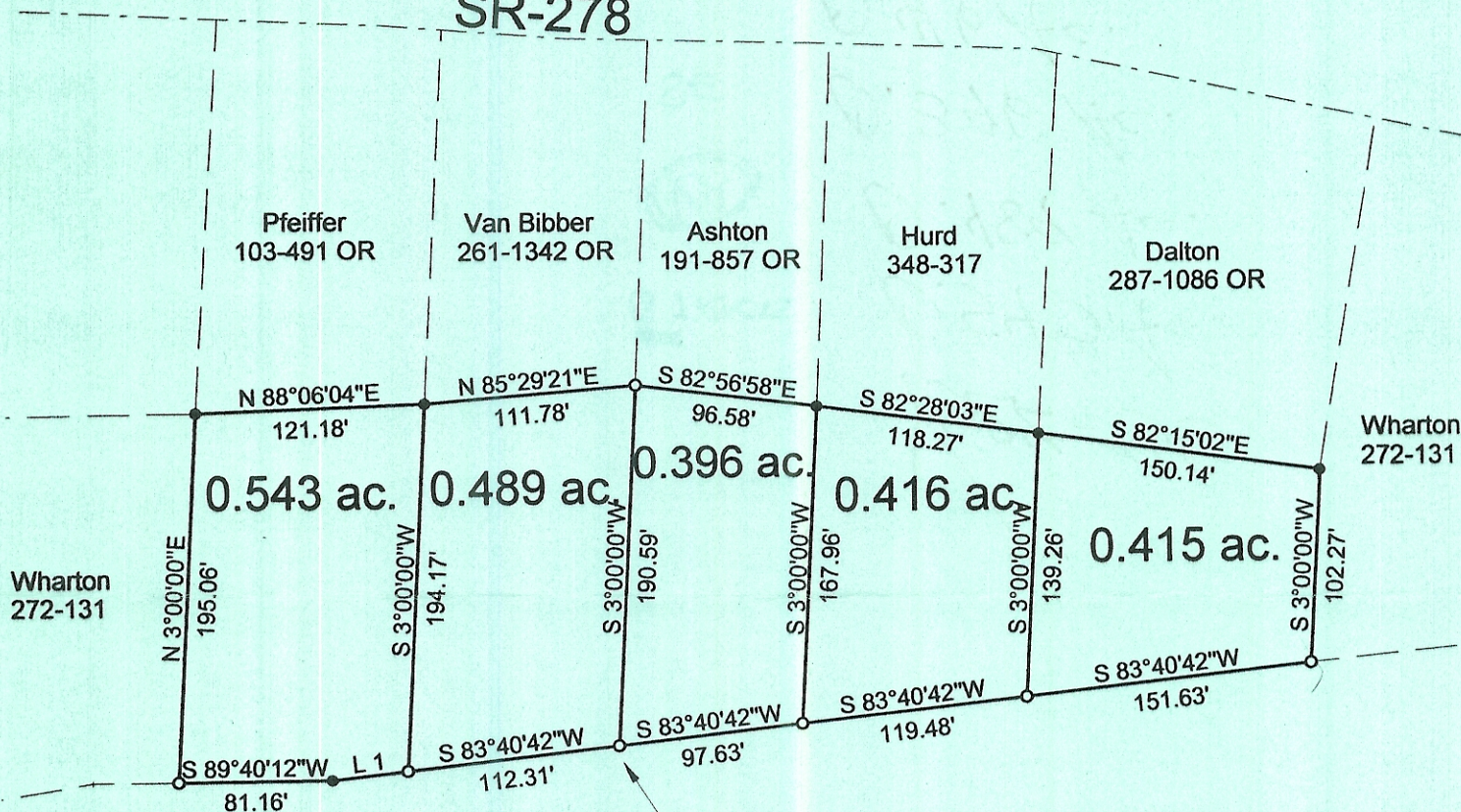
Kenneth E. Highland
80 Fayette St.
Nelsonville, Ohio 45764
740-753-1264

Kenneth E. Highland S-7581





SR-278



POB/POC- Bears N 75 10'49"W,
2757.92 feet from the S.E. corner
of Section 30 (calc. from deed)

U.S.A.
322-279

Line	Bearing	Distance
1	S 83°40'42"W	40.24'

NOTE: The 5 tracts shown
here are all transfers between
adjoining owners.

- = Iron Pin Set
- = Iron Pin Found

Description Checked for
Mathematical Accuracy
Athens County
ENGINEER'S OFFICE
BY: *S. Blaus*
DATE: *10-18-2006*

Scale 1"=100'



PLAT OF SURVEY OF 5 TRACTS

SURVEYED FOR DALE WHARTON

SUBDIVISION —

TOWNSHIP YORK SECTION 30 TOWN 12 RANGE 15

CORPORATION NELSONVILLE COUNTY ATHENS STATE OHIO

SCALE 1"= 100' DATE OCT, 2006

Kenneth E. Highland
80 Fayette St.
Nelsonville, Ohio 45764
740-753-1264



Kenneth E. Highland S-7581