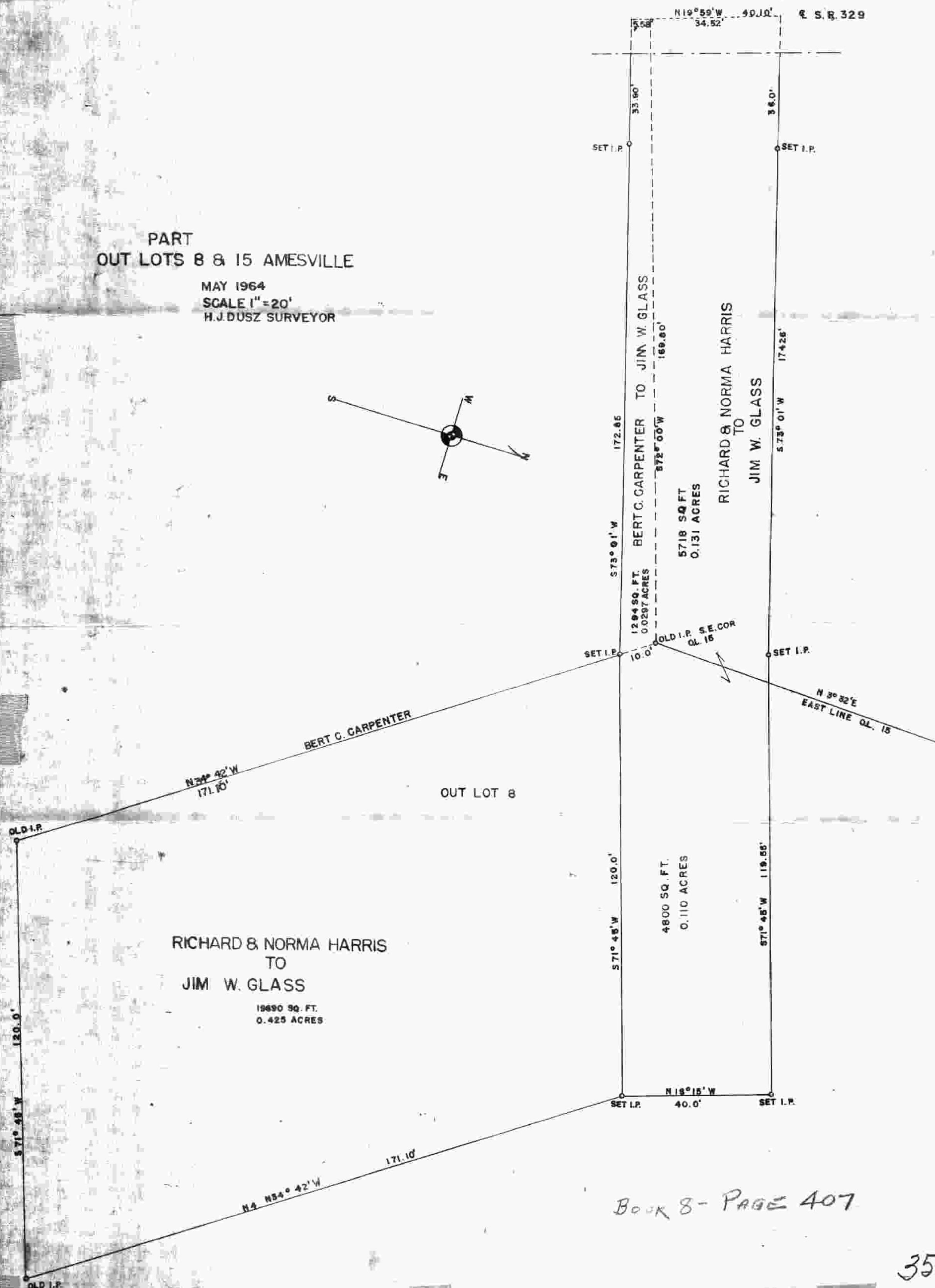
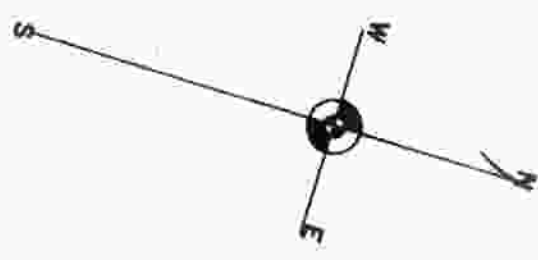


PART
OUT LOTS 8 & 15 AMESVILLE

MAY 1964
SCALE 1" = 20'
H.J. DUSZ SURVEYOR



N19°59'W 34.52' 99.00' E.S.R. 329

SET I.P. 33.80' 36.0'

1294 SQ. FT. 0.0297 ACRES
BERT C. CARPENTER TO JIM W. GLASS
5718 SQ. FT. 0.131 ACRES
RICHARD & NORMA HARRIS TO JIM W. GLASS

N24°42'W 171.10' BERT C. CARPENTER
OUT LOT 8

RICHARD & NORMA HARRIS TO JIM W. GLASS
19690 SQ. FT. 0.425 ACRES

10.0' OLD I.P. S.E. COR. Q.L. 15
N 3°32'E EAST LINE Q.L. 15

571°45'W 120.0' 4800 SQ. FT. 0.110 ACRES
571°45'W 119.55'
N 18°15'W 40.0'

120.0' 571°48'W OLD I.P.

N4 N34°42'W 171.10'

BOOK 8 - PAGE 407