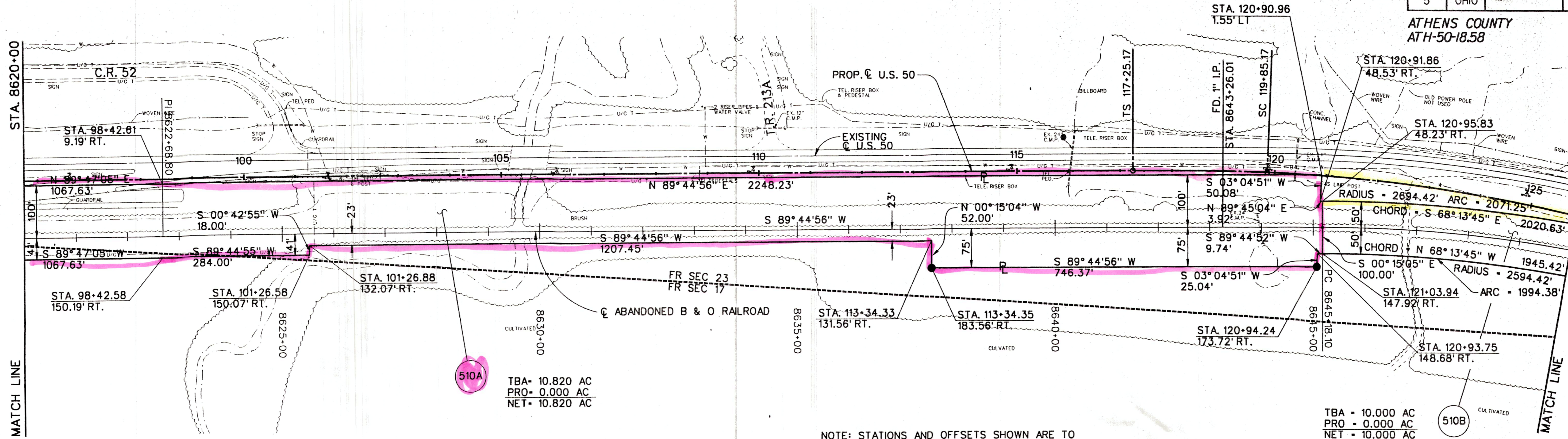


FED. RD. DIVISION	STATE	PROJECT
5	OHIO	

2  
7

SCALE: 1"=100'

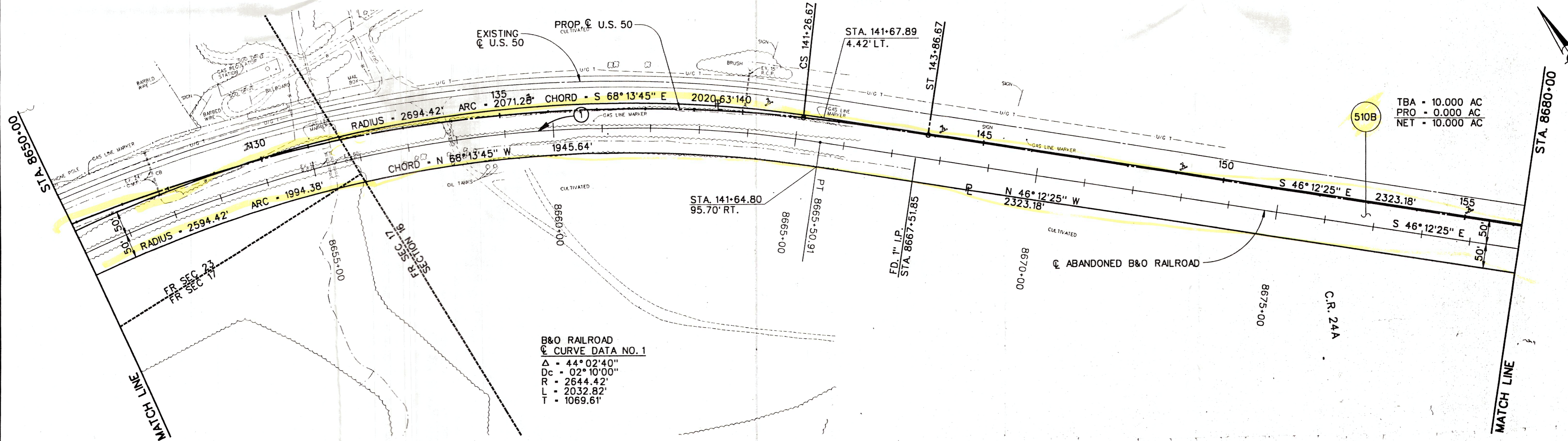
ATHENS COUNTY  
ATH-50-18.58



510A  
TBA - 10.820 AC  
PRO - 0.000 AC  
NET - 10.820 AC

510B  
TBA - 10.000 AC  
PRO - 0.000 AC  
NET - 10.000 AC

NOTE: STATIONS AND OFFSETS SHOWN ARE TO THE PROPOSED C OF U.S. ROUTE 50.



510B  
TBA - 10.000 AC  
PRO - 0.000 AC  
NET - 10.000 AC

B&O RAILROAD  
C CURVE DATA NO. 1  
Δ = 44° 02' 40"  
Dc = 02° 10' 00"  
R = 2644.42'  
L = 2032.82'  
T = 1069.61'

NOTE: STATIONS AND OFFSETS SHOWN ARE TO THE PROPOSED C OF U.S. ROUTE 50.

PARSONS BRINCKERHOFF OHIO, INC.  
COLUMBUS, OHIO

DATE: 01/22/92; PROJECT: 7834; FILE: 34RRPL02.DGN; REV. A

ATH-50 - RAILROAD PLAN, STA. 8620+00 TO STA. 8680+00