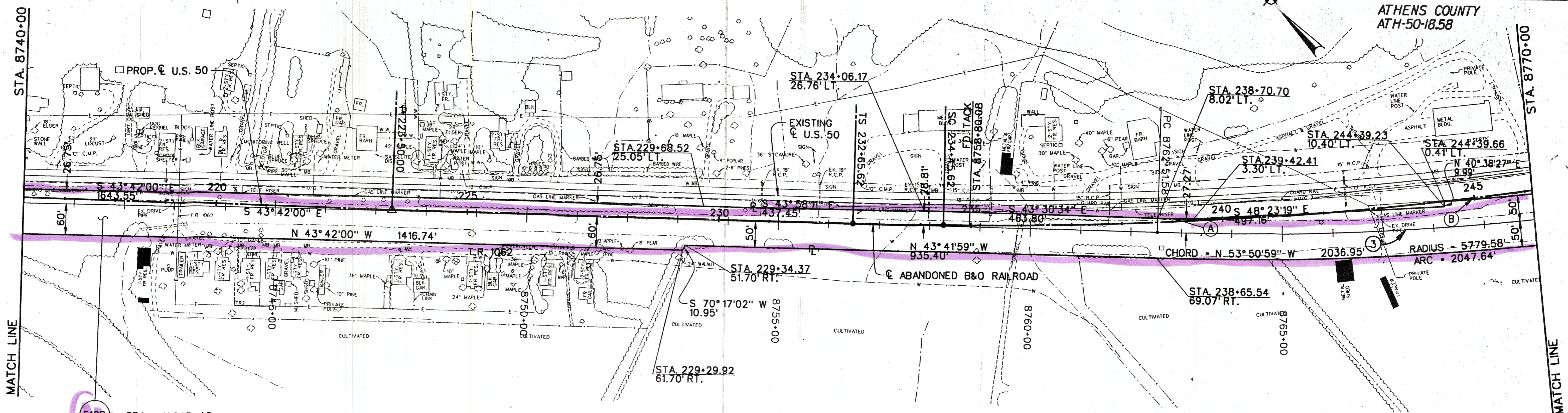


SCALE: 1"=100'

FED. RD. DIVISION	STATE	PROJECT
5	OHIO	

4
7

ATHENS COUNTY
ATH-50-18.58



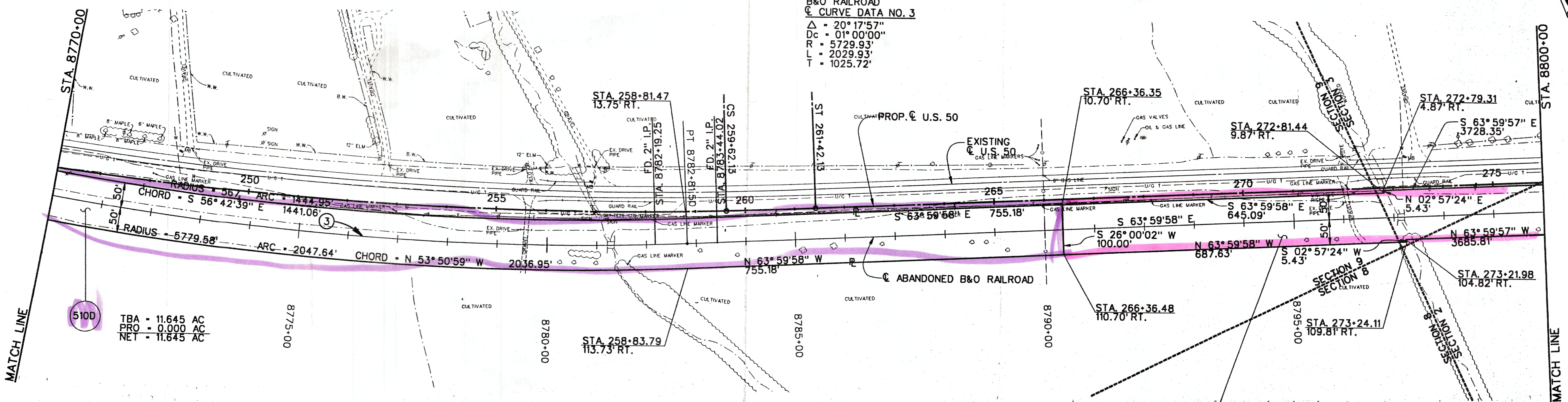
510D
TBA = 11.645 AC
PRO = 0.000 AC
NET = 11.645 AC

NOTE: STATIONS AND OFFSETS SHOWN ARE TO THE PROPOSED \bar{C} OF U.S. ROUTE 50.

A RADIUS = 5702.31'
ARC = 71.81'
CHORD = S 44° 03' 39" E 71.81'

B RADIUS = 5679.58'
ARC = 1444.95'
CHORD = S 56° 42' 39" E 1441.06'

B&O RAILROAD
 \bar{C} CURVE DATA NO. 3
 Δ = 20° 17' 57"
Dc = 01° 00' 00"
R = 5729.93'
L = 2029.93'
T = 1025.72'



510D
TBA = 11.645 AC
PRO = 0.000 AC
NET = 11.645 AC

NOTE: STATIONS AND OFFSETS SHOWN ARE TO THE PROPOSED \bar{C} OF U.S. ROUTE 50.

510E
TBA = 10.040 AC
PRO = 0.000 AC
NET = 10.040 AC

PARSONS BRINCKERHOFF OHIO, INC.
COLUMBUS, OHIO

DATE: 01/22/92; PROJECT: 7834; FILE: 34RRP04.DGN; REV. A