

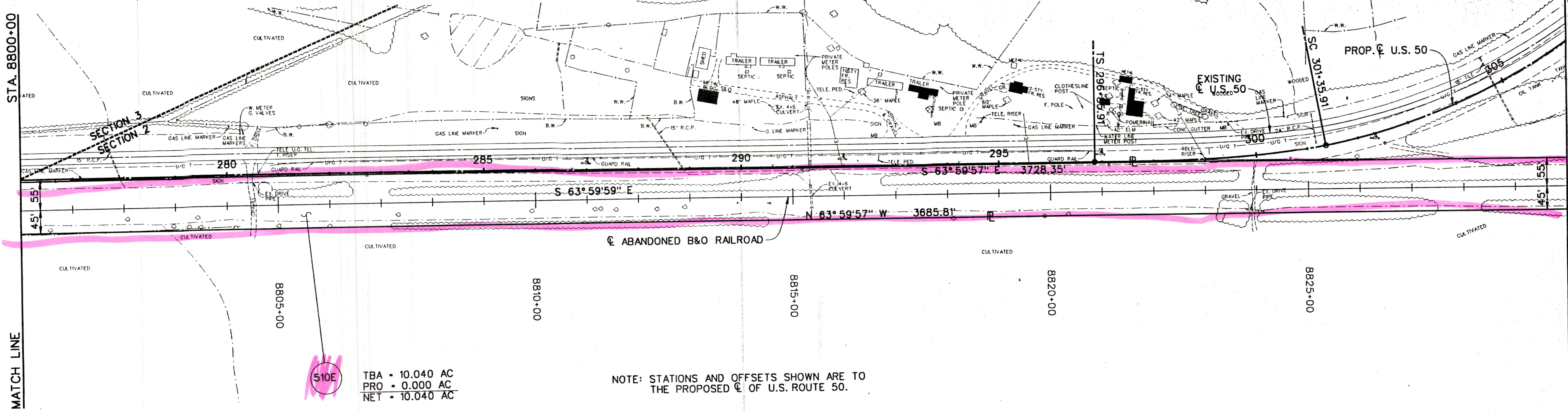
SCALE: 1"=100'

FED. RD. DIVISION	STATE	PROJECT	5
5	OHIO		7

ATHENS COUNTY
ATH-50-18.58

STA. 8800+00
MATCH LINE

STA. 8830+00
MATCH LINE



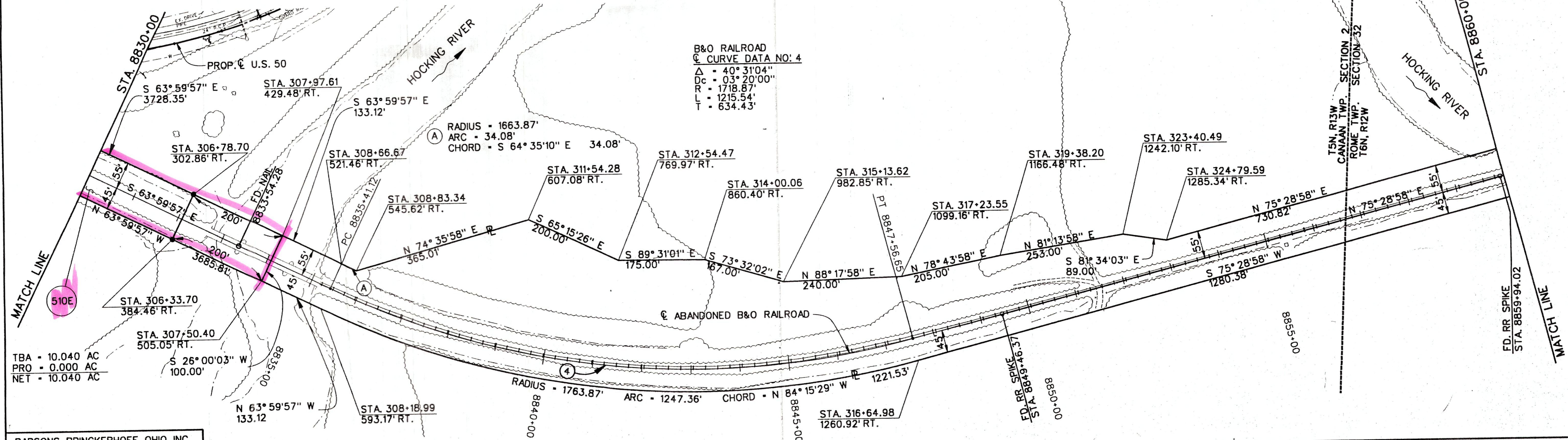
510E
TBA - 10.040 AC
PRO - 0.000 AC
NET - 10.040 AC

NOTE: STATIONS AND OFFSETS SHOWN ARE TO THE PROPOSED C OF U.S. ROUTE 50.

NOTE: STATIONS AND OFFSETS SHOWN ARE TO THE PROPOSED C OF U.S. ROUTE 50.

B&O RAILROAD
C CURVE DATA NO: 4
Δ = 40° 31'04"
Dc = 03° 20'00"
R = 1718.87'
L = 1215.54'
T = 634.43'

(A) RADIUS = 1663.87'
ARC = 34.08'
CHORD = S 64° 35'10" E 34.08'



510E
TBA - 10.040 AC
PRO - 0.000 AC
NET - 10.040 AC

PARSONS BRINCKERHOFF OHIO, INC.
COLUMBUS, OHIO

DATE: 01/22/92; PROJECT: 7834; FILE: 34RRPL05.DGN; REV. A

ATH-50 - RAILROAD PLAN, STA. 8800+00 TO STA. 8860+00