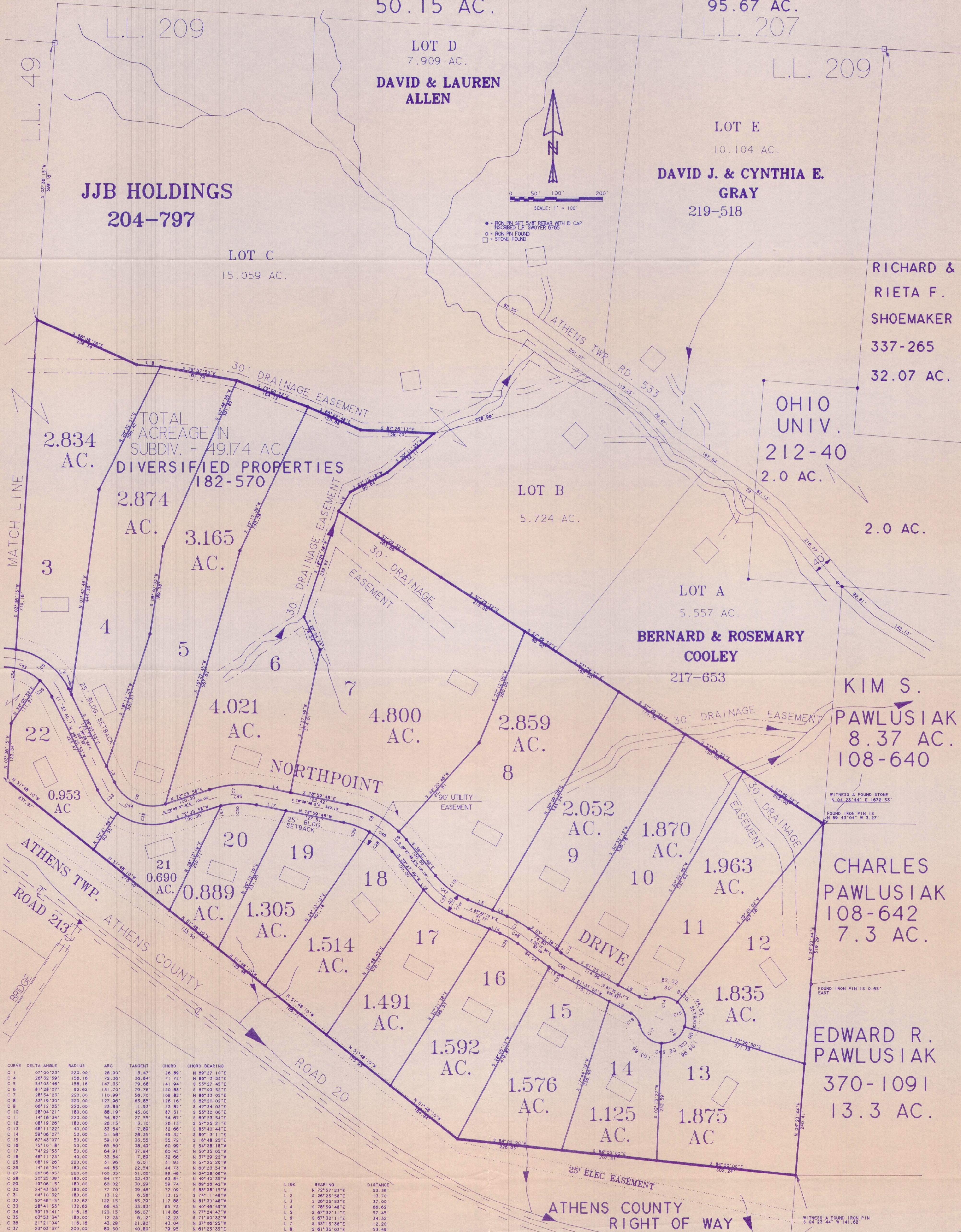


NORTHPOINT SUBDIVISION

RICHARD H. & WALFRAUD BALD 328-279 L.L. 206
50.15 AC.

VIRGIL JOHNSON ETAL
249-35
95.67 AC.
L.L. 207



CURVE	DELTA ANGLE	RADIUS	ARC	TANGENT	CHORD	CHORD BEARING
C 1	07°03'25"	220.00	26.99	13.47	26.89	N 89°27'10"E
C 2	26°32'59"	156.16	72.36	36.84	71.72	N 86°13'53"E
C 3	54°03'46"	156.16	147.35	79.68	141.24	S 53°27'45"E
C 4	81°28'07"	156.16	131.70	79.76	120.88	S 07°29'52"E
C 5	28°54'23"	220.00	110.99	56.70	109.82	N 86°53'05"E
C 6	33°19'30"	220.00	127.96	65.85	126.16	S 02°20'03"E
C 7	06°12'05"	220.00	23.83	11.93	23.82	S 42°34'03"E
C 8	28°04'21"	180.00	88.19	45.00	87.31	S 53°30'00"E
C 9	14°16'34"	220.00	54.82	27.55	54.67	S 60°23'54"E
C 10	08°19'26"	180.00	26.15	13.10	26.13	S 57°25'21"E
C 11	48°11'22"	40.00	33.64	17.89	32.66	S 85°40'44"E
C 12	59°06'27"	50.00	51.58	28.35	49.32	S 80°13'11"E
C 13	67°43'07"	50.00	59.10	33.55	55.72	S 16°48'23"E
C 14	75°10'18"	50.00	65.60	38.40	60.99	S 54°38'18"E
C 15	74°22'53"	50.00	64.91	37.94	60.45	S 50°35'05"W
C 16	48°11'22"	40.00	33.64	17.89	32.66	N 57°25'21"E
C 17	08°19'26"	220.00	31.96	16.01	31.93	N 57°25'21"E
C 18	14°16'34"	180.00	44.85	22.54	44.73	N 60°23'54"W
C 19	20°23'30"	180.00	64.17	32.43	63.84	N 49°40'39"W
C 20	39°06'15"	180.00	80.02	39.29	79.74	N 82°26'40"W
C 21	54°43'53"	180.00	77.73	39.46	77.09	S 88°18'15"W
C 22	04°10'32"	180.00	13.12	6.56	13.12	S 74°11'48"W
C 23	52°46'55"	132.62	122.15	63.79	117.88	N 81°30'48"W
C 24	28°41'53"	132.62	66.43	33.93	65.73	N 40°46'40"W
C 25	59°15'41"	116.16	120.15	66.07	114.86	N 77°24'47"W
C 26	03°53'54"	180.00	12.23	6.12	12.23	S 71°00'32"W
C 27	21°21'04"	116.16	43.29	21.90	43.04	N 37°06'25"W
C 28	14°16'34"	200.00	49.83	25.05	49.70	S 62°23'54"E
C 29	08°19'26"	200.00	29.06	14.55	29.03	S 57°25'21"E

NOTES:
 1. BUILDING SETBACKS AND 40' RIGHT OF WAY ARE TO BE USED FOR INSTALLATION AND EASEMENT FOR UTILITIES
 2. 30' DRAINAGE EASEMENTS ARE TO FOLLOW EXISTING DRAINAGE PATTERNS
 3. - POTENTIAL BUILDING SITE
 4. 49.174 - TOTAL ACRES (6.07 IN L.L. 49 & 43.104 AC. IN L.L. 209)
 - 47.235 - TOTAL ACRES IN LOTS
 - 1.939 - TOTAL ACRES IN ROAD