

**Branner Surveying**

12500 N. Peach Ridge  
Athens, Ohio

Situated in Section 32, T.4, R.13, Lodi Township, Athens County, Ohio and being more particularly described as follows:

Commencing at a stone in the southeast corner of Section 32, Lodi Township thence, South 3 degrees 37 minutes 16 seconds West, a distance of 442.78 feet,

Thence, North 52 degrees 22 minutes 17 seconds West, a distance of 342.54 feet to an iron pin found,

Thence, North 18 degrees 36 minutes 37 seconds West, a distance of 270.55 feet to an iron pin found,

Thence, North 69 degrees 2 minutes 42 seconds East, a distance of 122.79 feet to an iron pin found,

Thence, North 24 degrees 3 minutes 18 seconds West, a distance of 131.92 feet to an iron pin found,

Thence, South 65 degrees 43 minutes 56 seconds West, a distance of 204.15 feet to an iron pin found,

Thence, North 36 degrees 28 minutes 5 seconds West, a distance of 266.77 feet to a point, *the point of beginning*,

Thence, North 36 degrees 28 minutes 5 seconds West, a distance of 522.97 feet to an iron pin found,

Thence, North 33 degrees 41 minutes 16 seconds West, a distance of 603.14 feet to an iron pin found,

Thence, North 3 degrees 36 minutes 36 seconds East, a distance of 130.61 feet to an iron pin found,

Thence, North 78 degrees 47 minutes 13 seconds East, a distance of 205.63 feet to an iron pin found,

Thence, North 4 degrees 31 minutes 39 seconds East, a distance of 44.98 feet to a point in Township Road 68,

Thence, along said road, South 82 degrees 47 minutes 14 seconds East, a distance of 41.45 feet to a point,

Thence, South 72 degrees 44 minutes 56 seconds East, a distance of 161.74 feet to a point,

Thence, North 88 degrees 1 minute 39 seconds East, a distance of 146.96 feet to a point,

Thence, South 80 degrees 3 minutes 17 seconds East, a distance of 169.23 feet to a point,

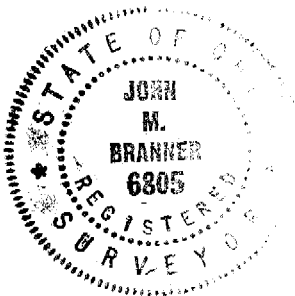
Thence, South 76 degrees 17 minutes 22 seconds East, a distance of 191.38 feet to a point,

Thence, South 64 degrees 13 minutes 18 seconds East, a distance of 102.81 feet to a point,

Thence, leaving said road, South 20 degrees 8 minutes 12 seconds West, a distance of 1033.35 feet to the point of beginning, passing iron pins set at 23.67 feet and 191.71 feet, describing a tract containing 13.94 acres.

Subject to all easements and rights of way.

Based on a field survey completed March 2003 by John M. Branner, P.S. 6508.



Description checked for  
Mathematical Accuracy  
ATHENS COUNTY  
ENGINEER'S OFFICE  
BY: S. Blausa  
DATE: 7-7-03

L0D#32

**Branner Surveying**

12500 N. Peach Ridge  
Athens, Ohio

Situated in Section 32, T.4, R.13, Lodi Township, Athens County, Ohio and being more particularly described as follows:

Commencing at a stone in the southeast corner of Section 32, Lodi Township thence, South 3 degrees 37 minutes 16 seconds West, a distance of 442.78 feet,

Thence, North 52 degrees 22 minutes 17 seconds West, a distance of 342.54 feet to an iron pin found,

Thence, North 18 degrees 36 minutes 37 seconds West, a distance of 270.55 feet to an iron pin found,

Thence, North 69 degrees 2 minutes 42 seconds East, a distance of 122.79 feet to an iron pin found,

Thence, North 24 degrees 3 minutes 18 seconds West, a distance of 131.92 feet to an iron pin found,

Thence, South 65 degrees 43 minutes 56 seconds West, a distance of 204.15 feet to an iron pin found, the *point of beginning*,

Thence, North 36 degrees 28 minutes 5 seconds West, a distance of 266.77 feet to a point,

Thence, North 20 degrees 8 minutes 12 seconds East, a distance of 1033.35 feet to point in Township Road 68, passing iron pins set at 841.64 feet and 1009.68 feet,

Thence, following said road, South 64 degrees 13 minutes 18 seconds East, a distance of 201.63 feet to a point,

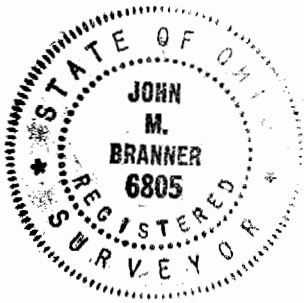
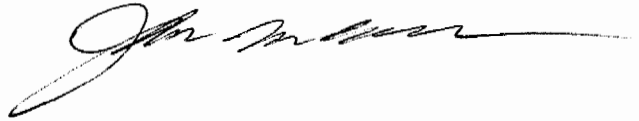
Thence, South 64 degrees 45 minutes 27 seconds East, 52.12 feet,

Thence, leaving said road, South 25 degrees 14 minutes 33 seconds West, a distance of 200.00 feet to an iron pin set, passing an iron pin set at 48.57 feet,

Thence, South 20 degrees 51 minutes 30 seconds West, a distance of 956.58 feet to the point of beginning, describing a tract containing 5.83 acres.

Subject to all easements and rights of way.

Based on a field survey completed March 2003 by John M. Branner, P.S. 6508.



Description checked for  
Mathematical Accuracy  
ATHENS COUNTY  
ENGINEER'S OFFICE  
BY:

DATE: S. Blausch  
4-4-03

**Branner Surveying**

12500 N. Peach Ridge  
Athens, Ohio

Situated in Section 32, T.4, R.13, Lodi Township, Athens County, Ohio and being more particularly described as follows:

Commencing at a stone in the southeast corner of Section 32 of Lodi Township, thence, South 3 degrees 37 minutes 16 seconds West, a distance of 442.78 feet to an iron pin found, the *point of beginning*,

Thence, North 52 degrees 22 minutes 17 seconds West, a distance of 342.54 feet to an iron pin found,

Thence, North 18 degrees 36 minutes 37 seconds West, a distance of 270.55 feet to an iron pin found,

Thence, North 69 degrees 2 minutes 42 seconds East, a distance of 122.79 feet to an iron pin found,

Thence, North 24 degrees 3 minutes 18 seconds West, a distance of 131.92 feet to an iron pin found,

Thence, South 65 degrees 43 minutes 56 seconds West, a distance of 204.15 feet to an iron pin found,

Thence, North 20 degrees 51 minutes 30 seconds East, a distance of 956.58 feet to an iron pin set,

Thence, North 25 degrees 14 minutes 33 seconds East, a distance of 200.00 feet to a point in Township

Road 68, passing an iron pin set at 151.43 feet,

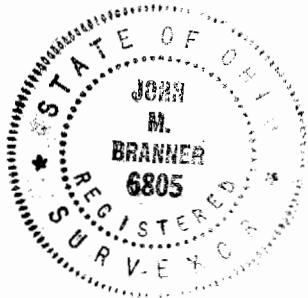
Thence, along said road, South 64 degrees 45 minutes 27 seconds East, a distance of 171.26 feet to a

Point in the east line of section 32;

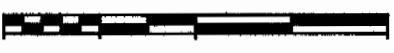
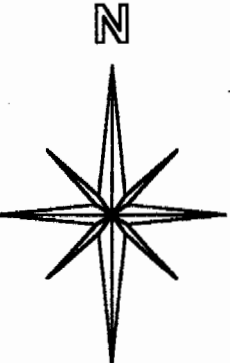
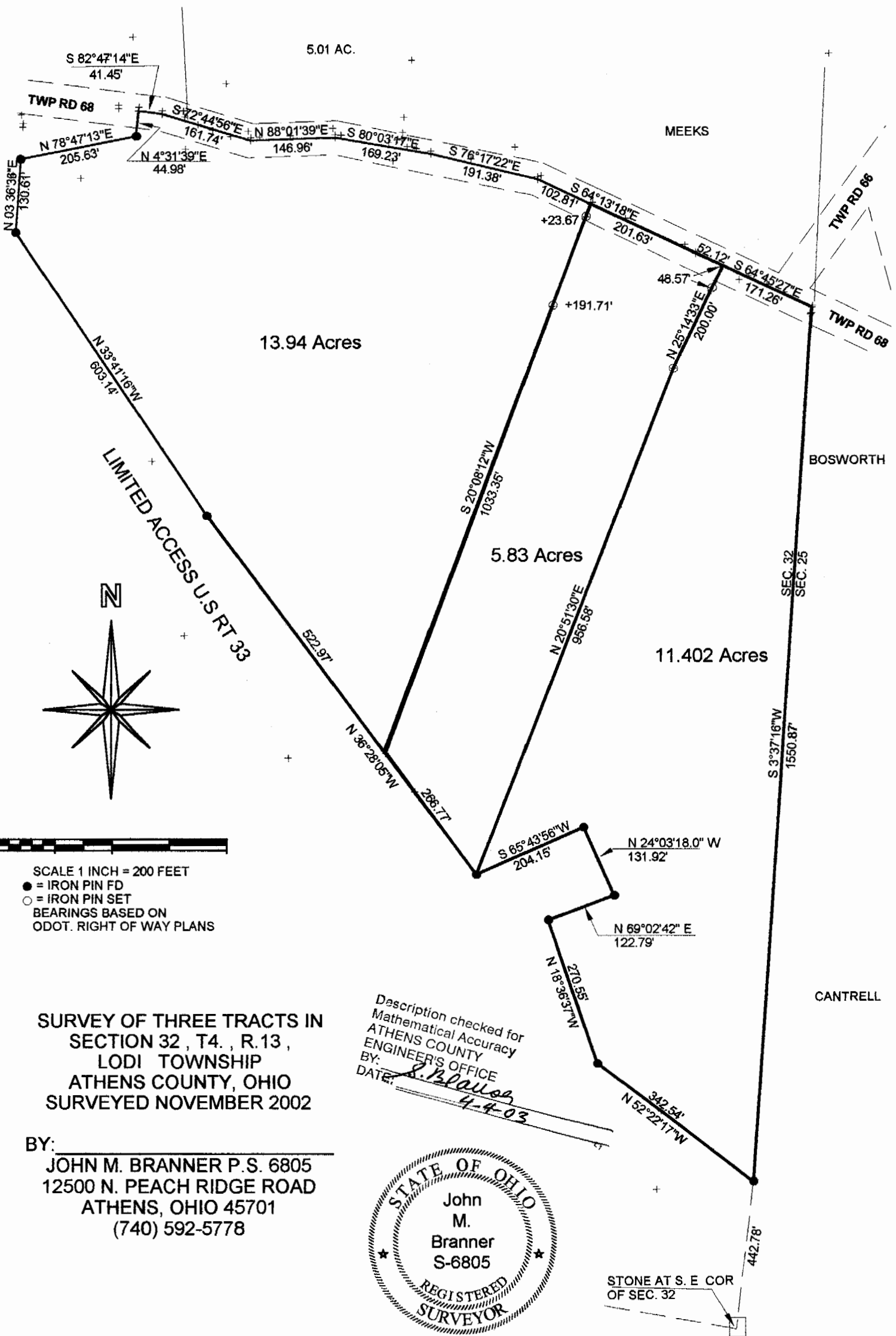
Thence, leaving said road, and along said section line, South 3 degrees 37 minutes 16 seconds West, a distance of 1550.87 feet to the point of beginning and containing 11.402 acres.

Subject to all easements and rights of way.

Based on a field survey completed March 2003 by John M. Branner, P.S. 6508.



Description checked for  
Mathematical Accuracy  
ATHENS COUNTY  
ENGINEER'S OFFICE  
BY: S. Blausch  
DATE: 4-4-03



SCALE 1 INCH = 200 FEET  
 ● = IRON PIN FD  
 ○ = IRON PIN SET  
 BEARINGS BASED ON  
 ODOT. RIGHT OF WAY PLANS

**SURVEY OF THREE TRACTS IN  
 SECTION 32, T4., R. 13,  
 LODI TOWNSHIP  
 ATHENS COUNTY, OHIO  
 SURVEYED NOVEMBER 2002**

BY: JOHN M. BRANNER P. S. 6805  
 12500 N. PEACH RIDGE ROAD  
 ATHENS, OHIO 45701  
 (740) 592-5778

Description checked for  
 Mathematical Accuracy  
 ATHENS COUNTY  
 ENGINEER'S OFFICE  
 BY: *S. Branner*  
 DATE: *4-4-03*

