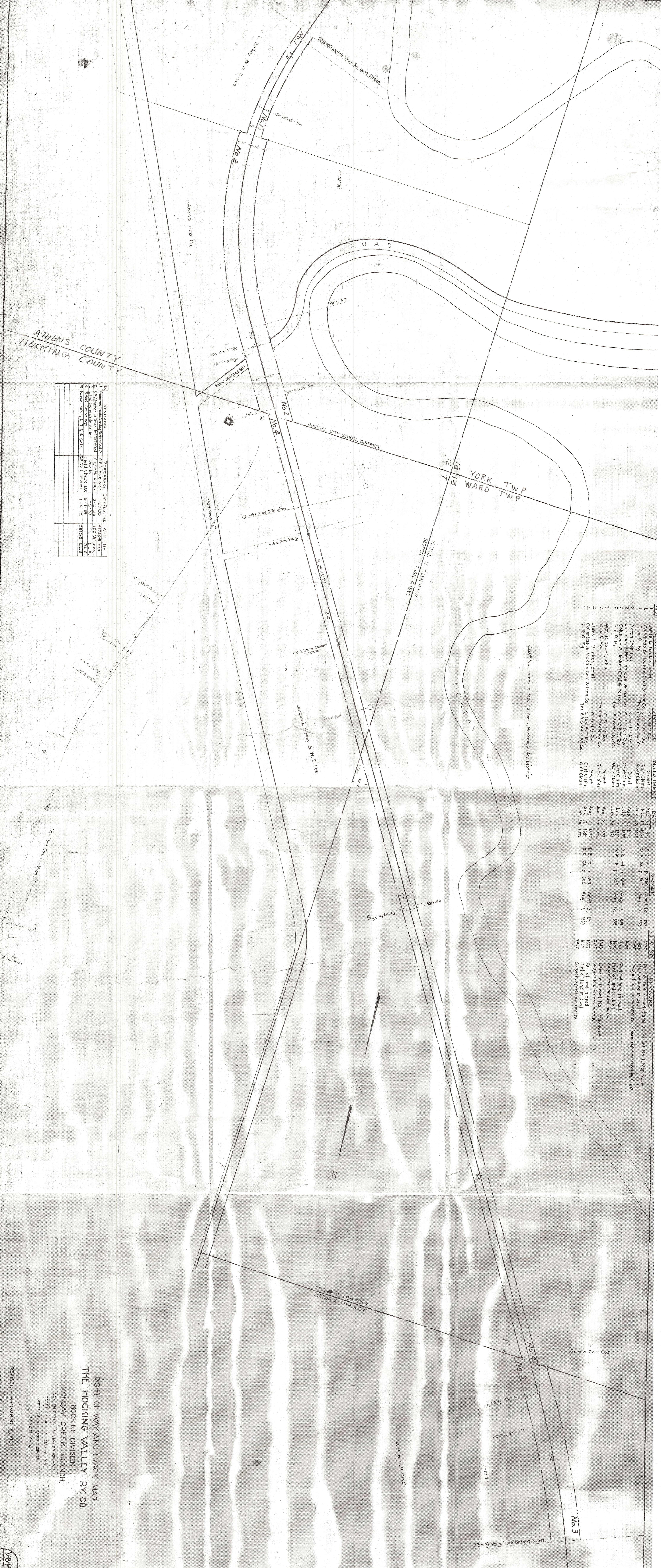


ATHENS COUNTY
HOCKING COUNTY

| No. | REVISIONS | DATE | BY |
|-----|-----------|------|----|
| 1 | Original | | |
| 2 | Revised | | |
| 3 | Revised | | |
| 4 | Revised | | |
| 5 | Revised | | |
| 6 | Revised | | |
| 7 | Revised | | |
| 8 | Revised | | |
| 9 | Revised | | |
| 10 | Revised | | |
| 11 | Revised | | |
| 12 | Revised | | |
| 13 | Revised | | |
| 14 | Revised | | |
| 15 | Revised | | |
| 16 | Revised | | |
| 17 | Revised | | |
| 18 | Revised | | |
| 19 | Revised | | |
| 20 | Revised | | |
| 21 | Revised | | |
| 22 | Revised | | |
| 23 | Revised | | |
| 24 | Revised | | |
| 25 | Revised | | |
| 26 | Revised | | |
| 27 | Revised | | |
| 28 | Revised | | |
| 29 | Revised | | |
| 30 | Revised | | |
| 31 | Revised | | |
| 32 | Revised | | |
| 33 | Revised | | |
| 34 | Revised | | |
| 35 | Revised | | |
| 36 | Revised | | |
| 37 | Revised | | |
| 38 | Revised | | |
| 39 | Revised | | |
| 40 | Revised | | |
| 41 | Revised | | |
| 42 | Revised | | |
| 43 | Revised | | |
| 44 | Revised | | |
| 45 | Revised | | |
| 46 | Revised | | |
| 47 | Revised | | |
| 48 | Revised | | |
| 49 | Revised | | |
| 50 | Revised | | |
| 51 | Revised | | |
| 52 | Revised | | |
| 53 | Revised | | |
| 54 | Revised | | |
| 55 | Revised | | |
| 56 | Revised | | |
| 57 | Revised | | |
| 58 | Revised | | |
| 59 | Revised | | |
| 60 | Revised | | |
| 61 | Revised | | |
| 62 | Revised | | |
| 63 | Revised | | |
| 64 | Revised | | |
| 65 | Revised | | |
| 66 | Revised | | |
| 67 | Revised | | |
| 68 | Revised | | |
| 69 | Revised | | |
| 70 | Revised | | |
| 71 | Revised | | |
| 72 | Revised | | |
| 73 | Revised | | |
| 74 | Revised | | |
| 75 | Revised | | |
| 76 | Revised | | |
| 77 | Revised | | |
| 78 | Revised | | |
| 79 | Revised | | |
| 80 | Revised | | |
| 81 | Revised | | |
| 82 | Revised | | |
| 83 | Revised | | |
| 84 | Revised | | |
| 85 | Revised | | |
| 86 | Revised | | |
| 87 | Revised | | |
| 88 | Revised | | |
| 89 | Revised | | |
| 90 | Revised | | |
| 91 | Revised | | |
| 92 | Revised | | |
| 93 | Revised | | |
| 94 | Revised | | |
| 95 | Revised | | |
| 96 | Revised | | |
| 97 | Revised | | |
| 98 | Revised | | |
| 99 | Revised | | |
| 100 | Revised | | |



| DESCRIPTION | DATE | RECORD | CURT NO. | REMARKS |
|--|--------------|--------------|----------|--|
| James L. Birney et al | Aug 17 1897 | D B 19 P 350 | 1637 | Part of land in deed same as Parcel No. 1, Map No. 6 |
| Columbus & Hocking Coal & Iron Co. C. H. V. & T. Ry. C. & O. Ry. | July 17 1889 | D B 64 P 305 | 1637 | Part of land in deed |
| James L. Birney et al | June 30 1922 | D B 64 P 305 | 1637 | Part of land in deed |
| James L. Birney et al | Aug 10 1877 | D B 64 P 305 | 1639 | Part of land in deed |
| Columbus & Hocking Coal & Iron Co. C. H. V. & T. Ry. C. & O. Ry. | July 17 1889 | D B 16 P 327 | 1622 | Part of land in deed |
| Columbus & Hocking Coal & Iron Co. The Hocking Ry. Co. | June 30 1922 | D B 16 P 327 | 1622 | Part of land in deed |
| Wm. H. Devel, et al | Aug 2 1912 | | 1640 | Subject to prior easements |
| James L. Birney et al | June 24 1912 | | 1640 | Subject to prior easements |
| James L. Birney et al | Aug 13 1877 | D B 19 P 350 | 1637 | Part of land in deed |
| James L. Birney et al | July 17 1889 | D B 64 P 305 | 1637 | Part of land in deed |
| James L. Birney et al | June 30 1922 | D B 64 P 305 | 1637 | Part of land in deed |
| James L. Birney et al | Aug 29 1922 | D B 64 P 305 | 1637 | Part of land in deed |

RIGHT OF WAY AND TRACK MAP
THE HOCKING VALLEY RY CO.
HOCKING DIVISION
MONDAY CREEK BRANCH

REVISIONS
1. Original
2. Revised
3. Revised
4. Revised
5. Revised
6. Revised
7. Revised
8. Revised
9. Revised
10. Revised
11. Revised
12. Revised
13. Revised
14. Revised
15. Revised
16. Revised
17. Revised
18. Revised
19. Revised
20. Revised
21. Revised
22. Revised
23. Revised
24. Revised
25. Revised
26. Revised
27. Revised
28. Revised
29. Revised
30. Revised
31. Revised
32. Revised
33. Revised
34. Revised
35. Revised
36. Revised
37. Revised
38. Revised
39. Revised
40. Revised
41. Revised
42. Revised
43. Revised
44. Revised
45. Revised
46. Revised
47. Revised
48. Revised
49. Revised
50. Revised
51. Revised
52. Revised
53. Revised
54. Revised
55. Revised
56. Revised
57. Revised
58. Revised
59. Revised
60. Revised
61. Revised
62. Revised
63. Revised
64. Revised
65. Revised
66. Revised
67. Revised
68. Revised
69. Revised
70. Revised
71. Revised
72. Revised
73. Revised
74. Revised
75. Revised
76. Revised
77. Revised
78. Revised
79. Revised
80. Revised
81. Revised
82. Revised
83. Revised
84. Revised
85. Revised
86. Revised
87. Revised
88. Revised
89. Revised
90. Revised
91. Revised
92. Revised
93. Revised
94. Revised
95. Revised
96. Revised
97. Revised
98. Revised
99. Revised
100. Revised

REVISED - DECEMBER 31, 1927

