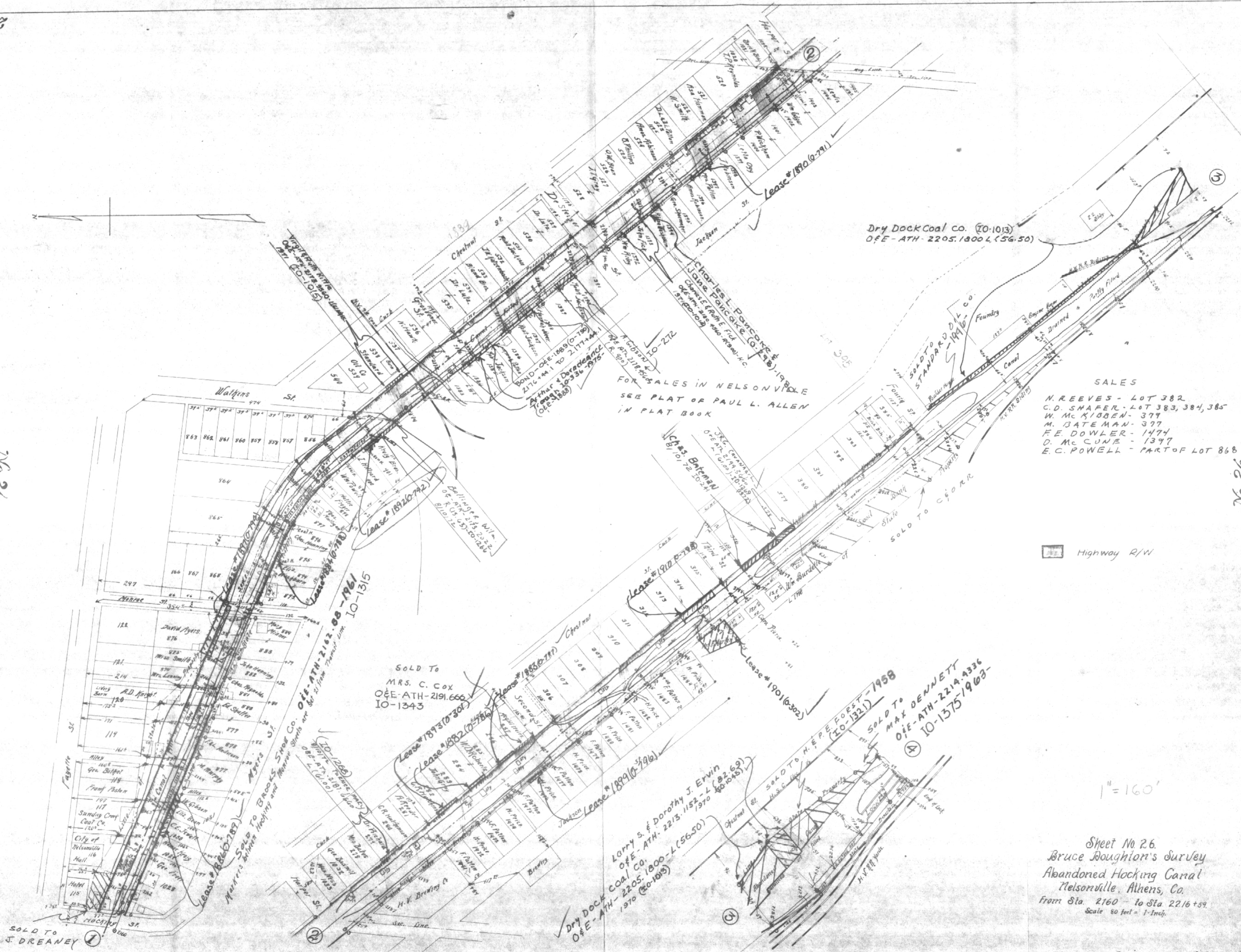


No. 26.

No. 26.



Dry Dock Coal Co. (IO-1013)
 O&E-ATH-2205.1800-L(56.50)

FOR SALES IN NELSONVILLE
 SEE PLAT OF PAUL L. ALLEN
 IN PLAT BOOK

- SALES
- N. REEVES - LOT 382
 - C. D. SHAFER - LOT 383, 384, 385
 - W. MC KIBBEN - 377
 - M. BATEMAN - 377
 - F. E. DOWLER - 1474
 - D. MC CUNE - 1397
 - E. C. POWELL - PART OF LOT 868

Highway R/W

1" = 160'

Sheet No. 26.
 Bruce Doughton's Survey
 Abandoned Hocking Canal
 Nelsonville, Athens, Co.
 From Sta. 2160 to Sta. 2216+59.
 Scale 80 feet = 1-Inch.

SOLD TO
 J. DREANEY

Larry S. & Dorothy J. Erwin
 O&E-ATH-2213.1152-L(82.69)
 Dry Dock Coal Co.
 O&E-ATH-2205.1800-L(56.50)
 1970 (IO-1013)

SOLD TO
 MAX DENNETT
 O&E-ATH-2219.9336
 IO-1375-1963