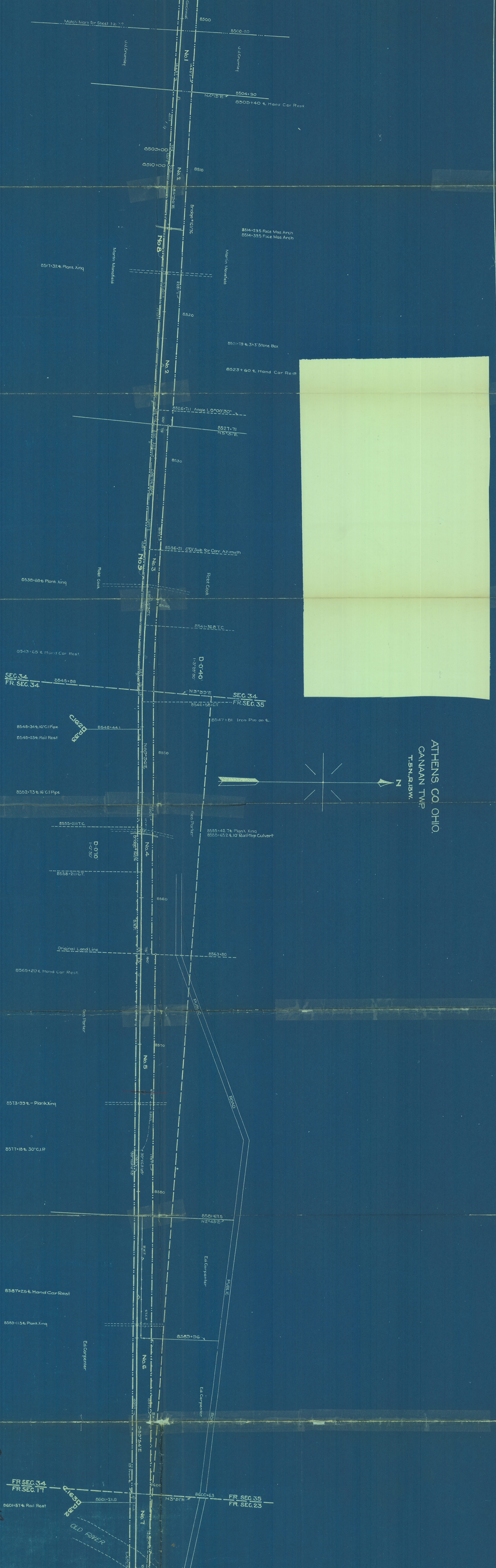
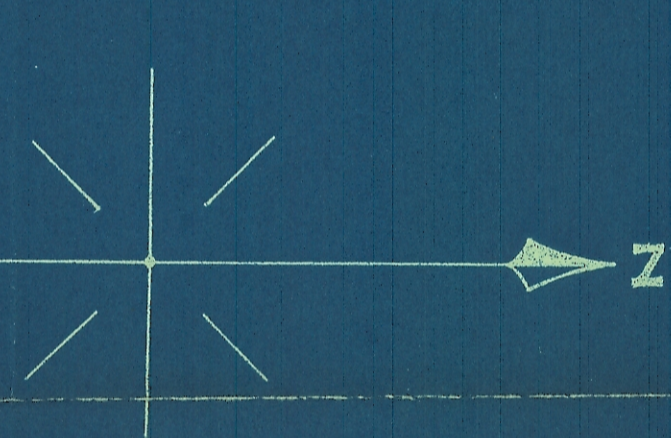


Note: All chaining was done on the right hand rail and all distances are measured from the center line of track.



ATHENS CO. OHIO.
CANAAN TWP
TENNISB.W.



Sheet No. 33 of 41 prepared by the Department of the Baltimore and Ohio Railroad Company, Baltimore, Md., under the supervision of the Chief Engineer, Baltimore, Md., in conformity with the provisions of the Act of the General Assembly of the State of Maryland, passed April 24, 1872, and amended by the Acts of the General Assembly of the State of Maryland, passed April 24, 1873, and April 24, 1874, and the Act of the General Assembly of the State of Maryland, passed April 24, 1875, and the Act of the General Assembly of the State of Maryland, passed April 24, 1876, and the Act of the General Assembly of the State of Maryland, passed April 24, 1877, and the Act of the General Assembly of the State of Maryland, passed April 24, 1878, and the Act of the General Assembly of the State of Maryland, passed April 24, 1879, and the Act of the General Assembly of the State of Maryland, passed April 24, 1880, and the Act of the General Assembly of the State of Maryland, passed April 24, 1881, and the Act of the General Assembly of the State of Maryland, passed April 24, 1882, and the Act of the General Assembly of the State of Maryland, passed April 24, 1883, and the Act of the General Assembly of the State of Maryland, passed April 24, 1884, and the Act of the General Assembly of the State of Maryland, passed April 24, 1885, and the Act of the General Assembly of the State of Maryland, passed April 24, 1886, and the Act of the General Assembly of the State of Maryland, passed April 24, 1887, and the Act of the General Assembly of the State of Maryland, passed April 24, 1888, and the Act of the General Assembly of the State of Maryland, passed April 24, 1889, and the Act of the General Assembly of the State of Maryland, passed April 24, 1890, and the Act of the General Assembly of the State of Maryland, passed April 24, 1891, and the Act of the General Assembly of the State of Maryland, passed April 24, 1892, and the Act of the General Assembly of the State of Maryland, passed April 24, 1893, and the Act of the General Assembly of the State of Maryland, passed April 24, 1894, and the Act of the General Assembly of the State of Maryland, passed April 24, 1895, and the Act of the General Assembly of the State of Maryland, passed April 24, 1896, and the Act of the General Assembly of the State of Maryland, passed April 24, 1897, and the Act of the General Assembly of the State of Maryland, passed April 24, 1898, and the Act of the General Assembly of the State of Maryland, passed April 24, 1899, and the Act of the General Assembly of the State of Maryland, passed April 24, 1900.

RIGHT-OF-WAY AND TRACK MAP
THE BALTIMORE AND OHIO SOUTHWESTERN RAILROAD COMPANY
 OPERATED BY
THE BALTIMORE AND OHIO RAILROAD COMPANY
 OHIO DIVISION
 MAIN LINE

RECORD OF CHANGES AFTER DATE OF VALUATION
 STATION 8500+00 TO STATION 8606+40
 SCALE: 1 IN. = 300 FT.
 JUNE 30, 1918
 OFFICE OF VALUATION ENGINEER
 BALTIMORE, MD.

REVISED TO
 DATE
 BY
 CHECKED
 APPROVED

Canaan Sec 34 & 35