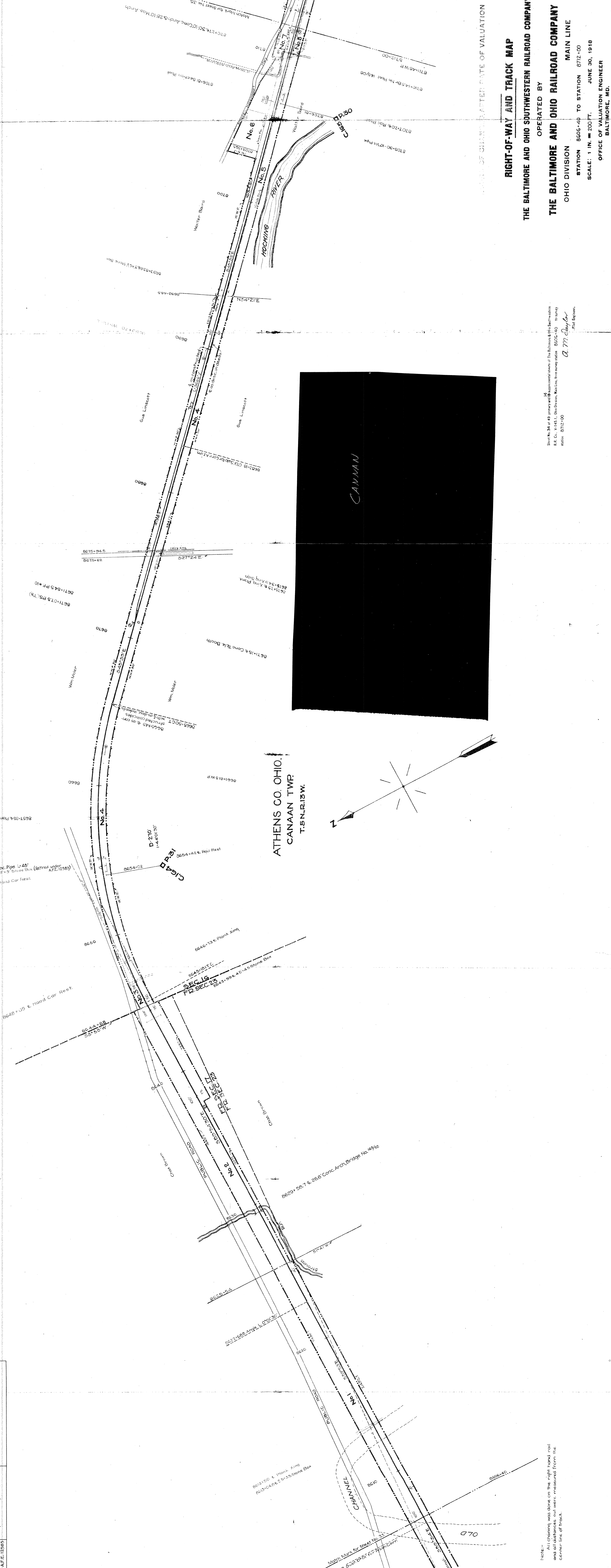
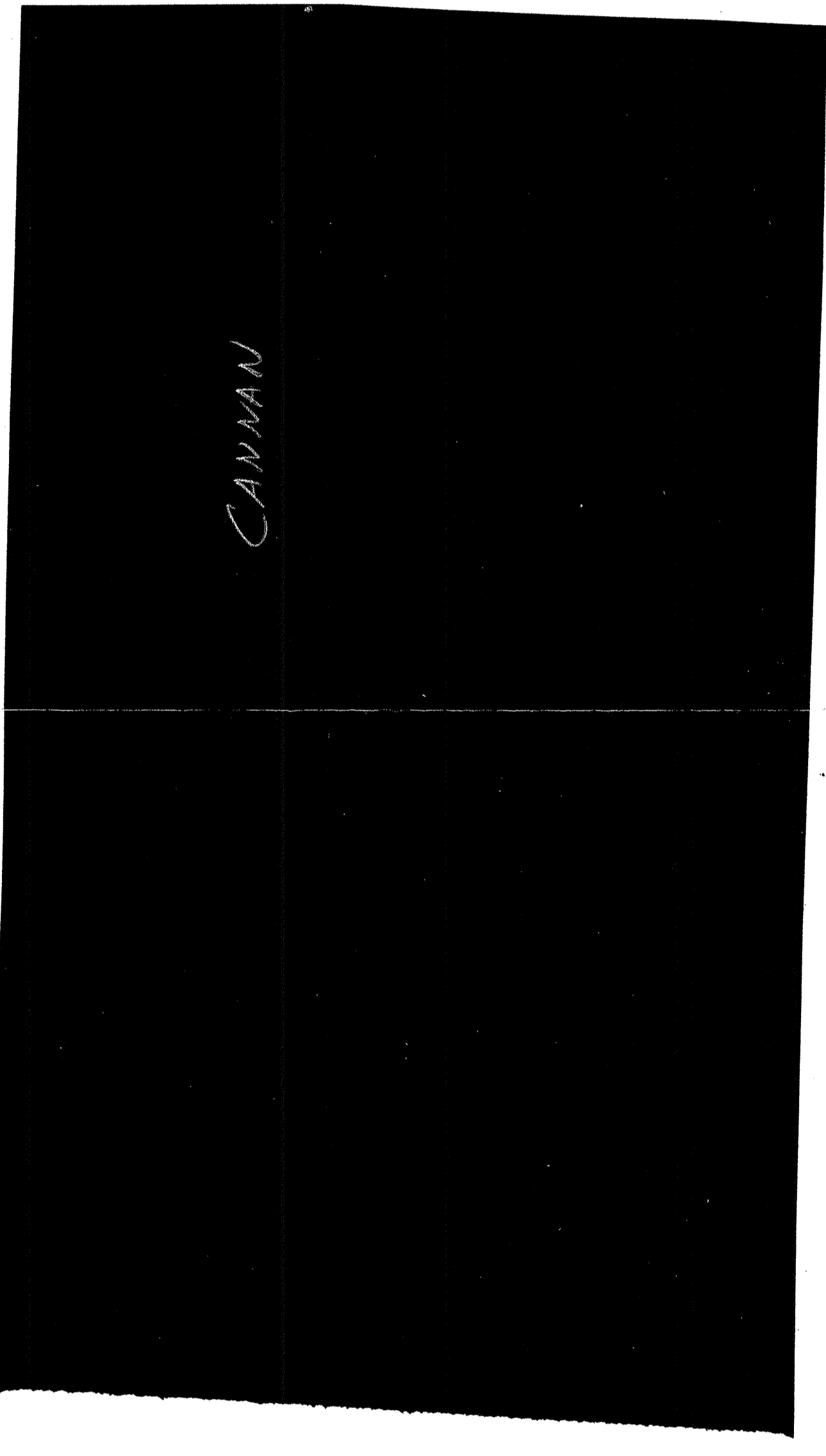
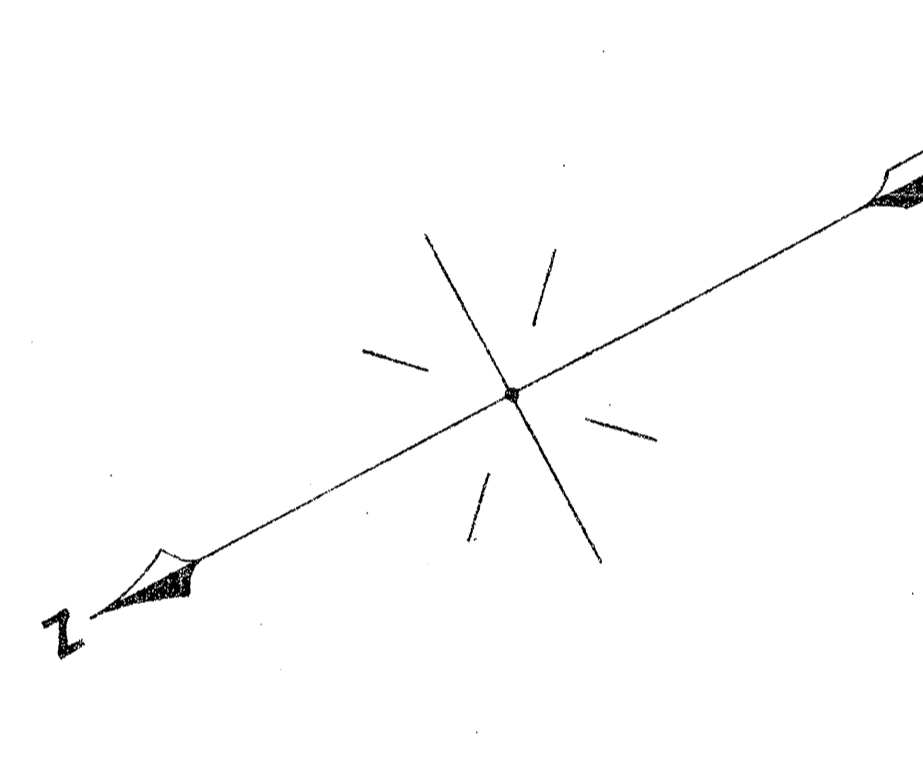


AUTHORITY	DATE INSTALLED OR DETERMINED	DESCRIPTION
C2973 A.F.E. 12980	Completed Mar. 23/1924	Removal of old 20" masonry and construction of new 24" concrete arch bridge with 5' car shed.
C-30294 A.F.E. 12983	Completed Apr. 4, 1925	Removal of Culvert, station 86954+27.



ATHENS CO. OHIO.
CANAAN TWP.
T.5N.R.13W.



RIGHT-OF-WAY AND TRACK MAP
OPERATED BY
THE BALTIMORE AND OHIO SOUTHWESTERN RAILROAD COMPANY
THE BALTIMORE AND OHIO RAILROAD COMPANY
OHIO DIVISION
MAIN LINE

OFFICE OF VALUATION ENGINEER
BALTIMORE, MD.
STATION 8606+40 TO STATION 8712+00
JUNE 30, 1918
SCALE: 1 IN. = 200 FT.

Checked by
A. M. Taylor
Civil Engineer

Note: All bearings were taken on the right hand, still
and all distances, call were measured from the
center line of track.