

RECORD OF CHANGES AFTER DATE OF VANTATION

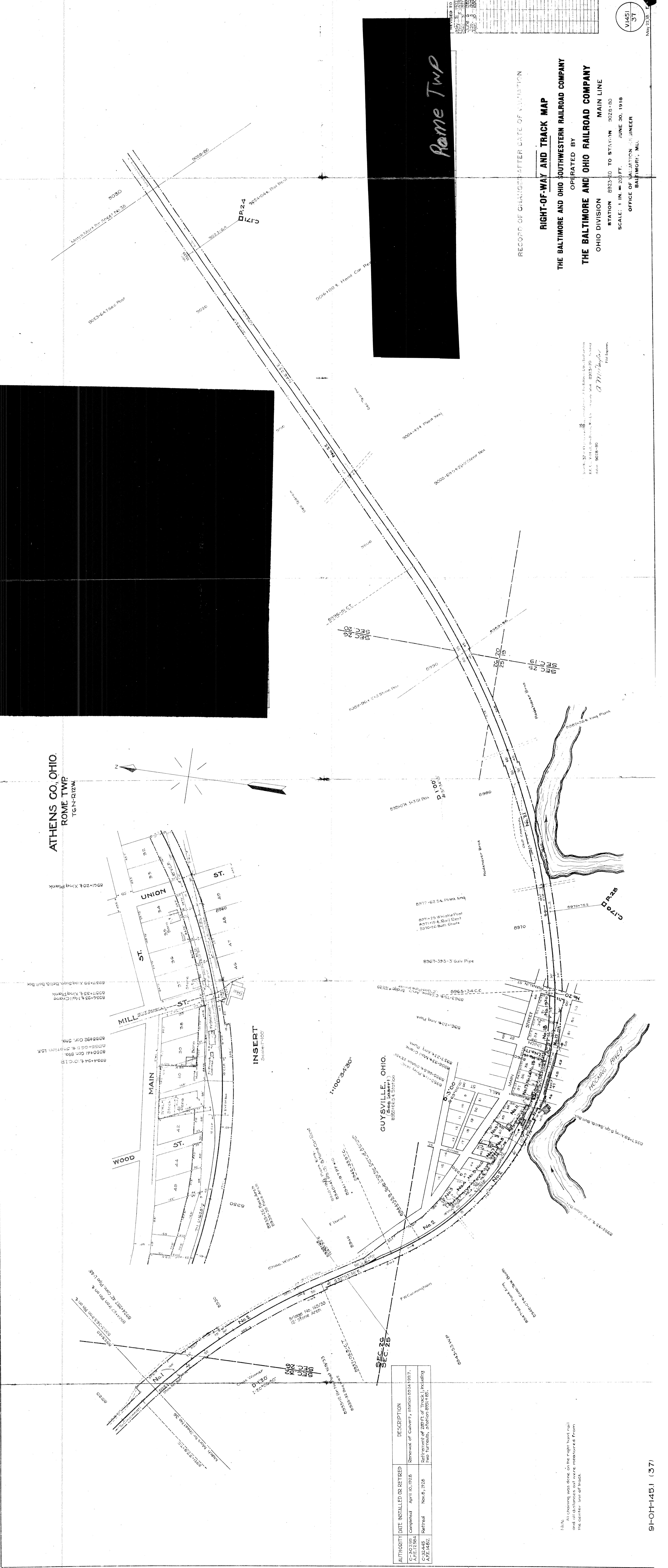
RIGHT-OF-WAY AND TRACK MAP

OPERATED BY
THE BALTIMORE AND OHIO SOUTHWESTERN RAILROAD COMPANY
THE BALTIMORE AND OHIO RAILROAD COMPANY
 OHIO DIVISION

MAIN LINE
 STATION 8923+00 TO STATION 9028+00
 SCALE: 1 IN. = 200 FT. JUNE 30, 1918
 OFFICE OF VALUATION AND ENGINEER
 BALTIMORE, MD.

Rome Twp

Drawn by
 Checked by
 Approved by



AUTHORITY	DATE INSTALLED OR RETIRED	DESCRIPTION
C-30289	Completed April 10, 1928	Renewal of Culvert, station 8924+93.7.
A-2512384		
C-32445	Retired Nov. 9, 1928	Retirement of 280 ft. of track, including two turnouts, station 8924+165.
A-2514262		

Note: All changes were done unless noted and all distances are measured from the center line of track.