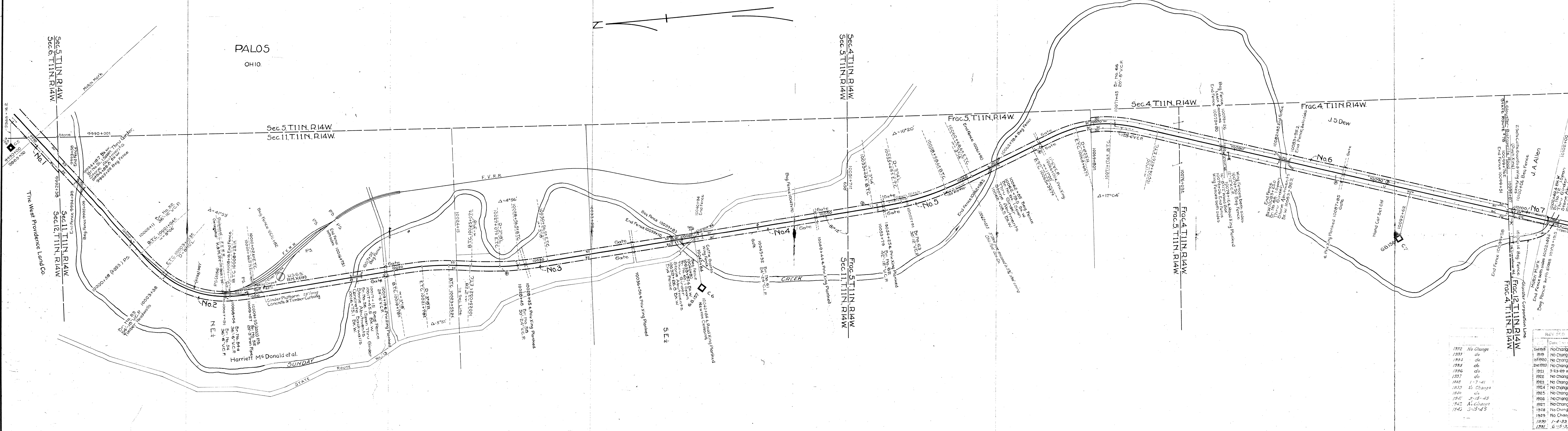


No.	Grantor	Grantee	Instrument	Date	Record	Cust. No.	Remarks
1	The West Providence Land Co.	O.C.R.R. Co.	Deed	Mar. 29, 1881	D.B. 50, Page 292, Apr. 29, 1881	17	
2	Harriet M <sup>c</sup> Donald et al	K.&M. Ry. Co.		Oct. 24, 1883		18	
3	No paper title found			Feb. 26, 1898	80, 529, Jan. 12, 1899	19	
4						20	Held by adverse possession and claimed by Ry. Co.
5						21	
6	J.S. Dew	A.&L.E.R.R. Co.			49, 446, Oct. 9, 1880	22	
7	J.A. Allen	K.&M. Ry. Co.		Apr. 16, 1895	75, 214, May 17, 1895	23	
						24	



Year	Change
1912	No Change
1913	do
1914	do
1915	do
1916	do
1917	do
1918	do
1919	do
1920	do
1921	do
1922	do
1923	do
1924	do
1925	do
1926	do
1927	do
1928	do
1929	do
1930	do
1931	do
1932	do
1933	do
1934	do
1935	do
1936	do
1937	do
1938	do
1939	do
1940	do
1941	do
1942	do
1943	do
1944	do
1945	do
1946	do
1947	do
1948	do
1949	do
1950	do
1951	do
1952	do
1953	do
1954	do
1955	do
1956	do
1957	do
1958	do
1959	do
1960	do
1961	do
1962	do
1963	do
1964	do
1965	do
1966	do
1967	do
1968	do
1969	do
1970	do
1971	do
1972	do
1973	do
1974	do
1975	do
1976	do
1977	do
1978	do
1979	do
1980	do
1981	do
1982	do
1983	do
1984	do
1985	do
1986	do
1987	do
1988	do
1989	do
1990	do
1991	do
1992	do
1993	do
1994	do
1995	do
1996	do
1997	do
1998	do
1999	do
2000	do

**THE TOLEDO AND OHIO CENTRAL RAILWAY  
RIGHT-OF-WAY AND TRACK MAP**

**KANAWHA AND MICHIGAN RY.**

STATION 9990+00 TO STATION 10102+00  
SCALE 1 IN = 200 FT. JUNE 30, 1918.

OFFICE OF LAND AND TAX AGENT  
COLUMBUS, OHIO.

BY AGREEMENT OF MERGER DATED DEC. 15, 1937, APPROVED  
BY INTERSTATE COMMERCE COMMISSION, JUNE 17, 1938, FIN-  
ANCE DOCKET NO. 11907, THE KANAWHA AND MICHIGAN RY. CO.  
WAS MERGED INTO THE TOLEDO AND OHIO CENTRAL RAILWAY  
CO., EFFECTIVE JUNE 30, 1938.

Sheet No. 1 of 55 of The Kanawha & Michigan Railway  
from Survey Station 9990+00 to Survey Station 10102+00

Land & Tax Agent

ATHENS COUNTY  
TRIMBLE TOWNSHIP

V307  
5

V8a  
3

V8  
3

K&M  
V2a-0  
3

K&M  
V2-0  
3