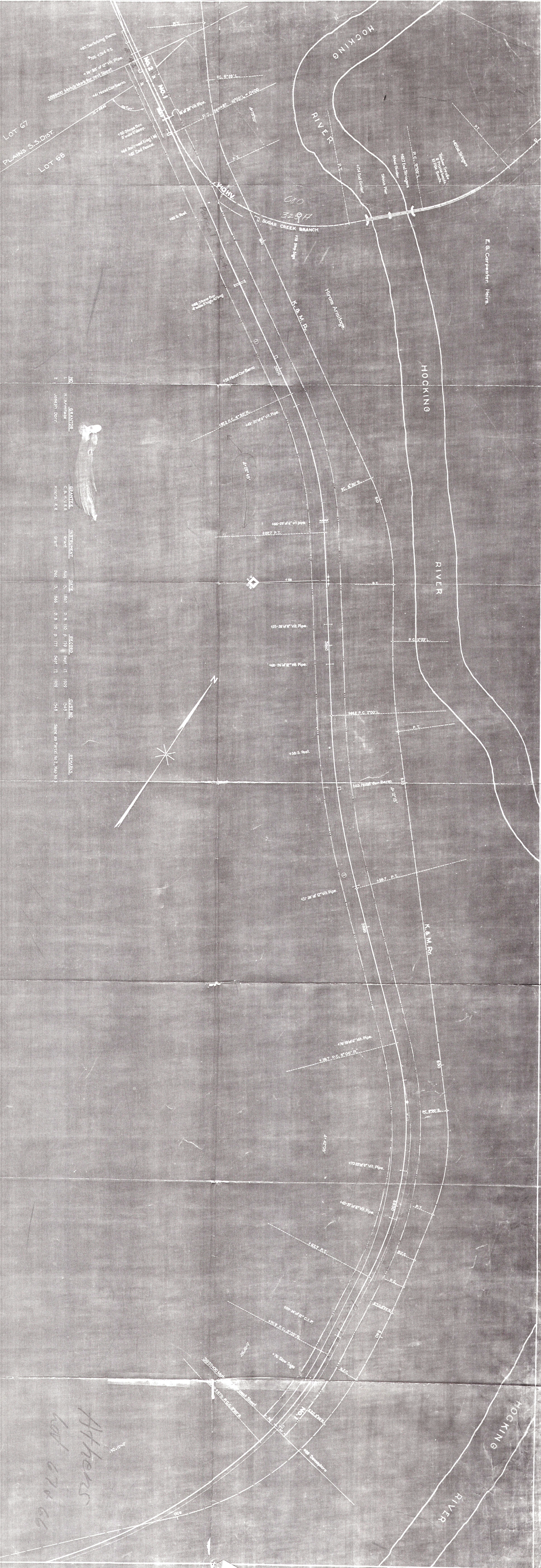
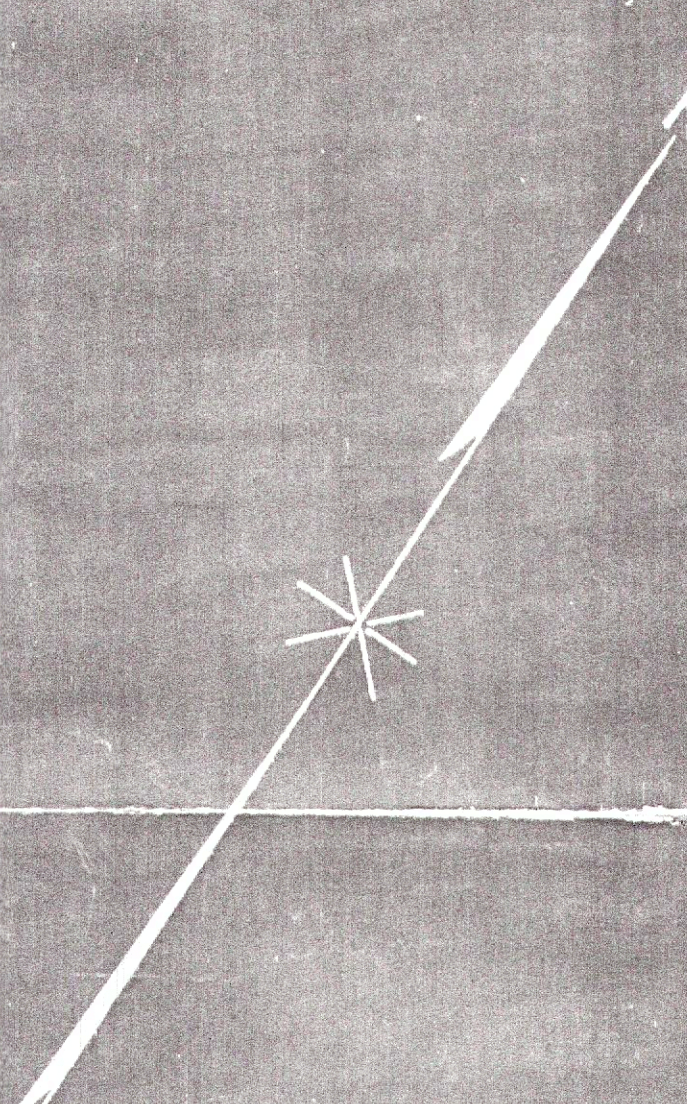


REVISION	DATE	BY	REFERENCE
1	0-21-28	W. H. KENNEDY	PLANS S.S. DIST.
2	5-20-28	W. H. KENNEDY	PLANS S.S. DIST.
3	5-20-28	W. H. KENNEDY	PLANS S.S. DIST.
4	5-20-28	W. H. KENNEDY	PLANS S.S. DIST.
5	5-20-28	W. H. KENNEDY	PLANS S.S. DIST.
6	5-20-28	W. H. KENNEDY	PLANS S.S. DIST.
7	5-20-28	W. H. KENNEDY	PLANS S.S. DIST.
8	5-20-28	W. H. KENNEDY	PLANS S.S. DIST.
9	5-20-28	W. H. KENNEDY	PLANS S.S. DIST.
10	5-20-28	W. H. KENNEDY	PLANS S.S. DIST.



NO.	GRANTOR	INSTRUMENT	DATE	RECORD	SUBJ. NO.	REMARKS
1	H. Armbrage	Grant	Aug. 15, 1887	2 B. 10 P. 179	1549	
2	Joseph Dorst	Grant	Dec. 13, 1888	2 B. 110 P. 177	1548	Same as parcel No. 2, Map No. 3



RIGHT OF WAY AND TRACK MAP  
 THE HOOKING VALLEY RY. CO.  
 HOOKING DIVISION.  
 STATION 88800 TO STATION 88800  
 SCALE 1" = 500'. LADDER IN B.L.  
 OFFICE OF SURVEYOR - ENGINEERS.  
 COLUMBIAS, OHIO.

*Athens*  
*lot 67 & 66*



Other No. refers to other maps in Hooking Valley District.

REVISION - DECEMBER 31, 1927